

## HS1TK10SS830NBW



## HANCE TRACK 220 1000 WW SSP BK/WH.

**Description:**

Multi-directional to adapt to three-phase track projector model HANCE TRACK 220 1000 WW SSP BK/WH., LAMP brand. Made of textured white color painted injected aluminium. Passive dissipation for a proper thermal management. Model for LED HI-POWER, with warm white colour temperature and control gear included. With Superspot optics. Insulation class I.

**Finish:** Texturised white RAL 9010

**Weight:** 470 g

**Installation:** 3-Circuit track

**TECHNICAL SPECIFICATIONS:**

<b>Light output:</b>	545 lm	<b>°K :</b>	3000
<b>Plum:</b>	9W	<b>CRI :</b>	80
<b>Efficacy:</b>	63 lm/w	<b>MacAdam:</b>	3
<b>Type:</b>	HIGH POWER CREE	<b>Power Supply:</b>	100-240V 50/60Hz
<b>LED Lifetime:</b>	50.000 L90	<b>Gear:</b>	Electronic
<b>Power:</b>	7W		

*Light output tolerance +/- 10%*

**CUSTOM MADE OPTIONS:**

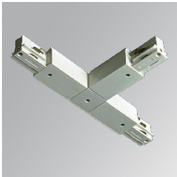
ACCESORIES :

Assembly



**Product code:**  
TKAECG

**Description:**  
TRACK ACC. END COVER GR.



**Product code:**  
TKATLODNB  
TKATLODNG

**Description:**  
TRACK ACC. EXT LEFT T JOINT BK.  
TRACK ACC. EXT LEFT T JOINT GR.

ACCESORIES :

Optical



**Product code:**  
HSCU50

**Description:**  
HANCE 1000/2000 ACC. CUTTING BEAM



**Product code:**  
HSEL50

**Description:**  
HANCE 1000/2000 ACC. ELIPTICAL LENS



**Product code:**  
HSRI65C

**Description:**  
HANCE 1000/2000 ACC. RING DECO CO.



**Product code:**  
HSRI65M

**Description:**  
HANCE 1000/2000 ACC. RING DECO MET.



**Product code:**  
HSRI65W

**Description:**  
HANCE 1000/2000 ACC. RING DECO WH.