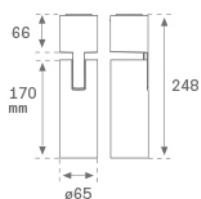


## HS1SF20SP840NBW



## HANCE SUR 2000 NW SP WH.

**Description:**

Multi-directional for surface mounting projector model HANCE SUR 2000 NW SP WH., LAMP brand. Made of textured white color painted injected aluminium. Passive dissipation for a proper thermal management. Model for LED COB, with neutral white colour temperature and control gear included. With Spot high purity aluminium reflector. Insulation class I.

**Finish:** Texturised white RAL 9010

**Weight:** 720 g

**Installation:** Surface

**TECHNICAL SPECIFICATIONS:**

<b>Light output:</b>	1.808 lm	<b>°K :</b>	4000
<b>Plum:</b>	20,7W	<b>CRI :</b>	80
<b>Efficacy:</b>	87,3 lm/w	<b>MacAdam:</b>	3
<b>Type:</b>	COB	<b>Power Supply:</b>	220-240V 50/60Hz
<b>LED Lifetime:</b>	50.000 L80 B10 (Ta=25°C)	<b>Gear:</b>	Electronic
<b>Power:</b>	18W		

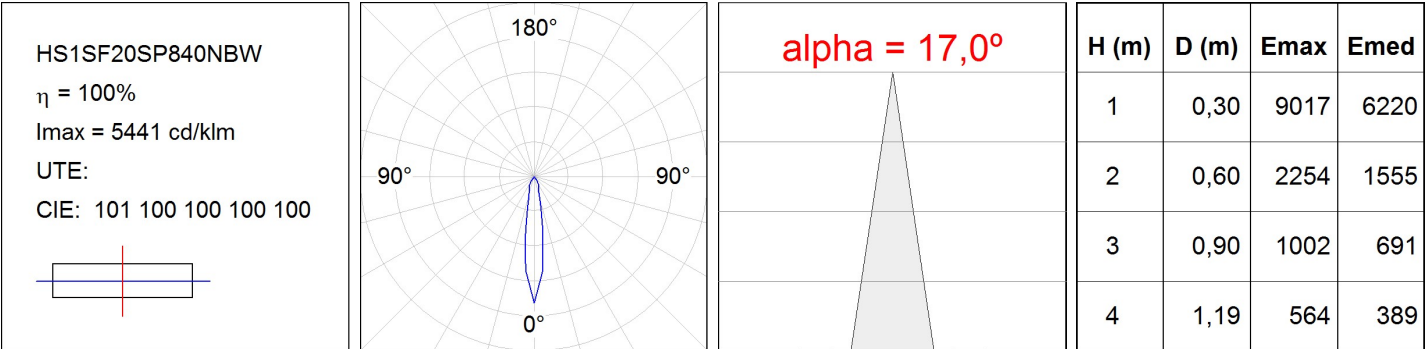
*Light output tolerance +/- 10%*

**CUSTOM MADE OPTIONS:**

HS1SF20SP840NBW

HANCE SUR 2000 NW SP WH.

PHOTOMETRIC DATA :



ACCESORIES :

Optical



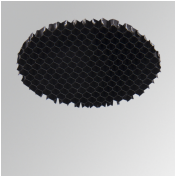
**Product code:**  
HSCU50

**Description:**  
HANCE 1000/2000 ACC. CUTTING BEAM



**Product code:**  
HSEL50

**Description:**  
HANCE 1000/2000 ACC. ELIPTICAL LENS



**Product code:**  
HSHO50

**Description:**  
HANCE 1000/2000 ACC. HONEYCOMB GRILLE



**Product code:**  
HSRI65C

**Description:**  
HANCE 1000/2000 ACC. RING DECO CO.



**Product code:**  
HSRI65M

**Description:**  
HANCE 1000/2000 ACC. RING DECO MET.



**Product code:**  
HSRI65W

**Description:**  
HANCE 1000/2000 ACC. RING DECO WH.



**Product code:**  
HSSL50

**Description:**  
HANCE 1000/2000 ACC. SOFT LENS



**Product code:**  
HSTR50

**Description:**  
HANCE 1000/2000 ACC. DIF TRANS