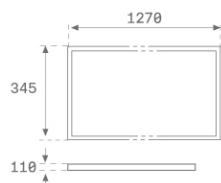
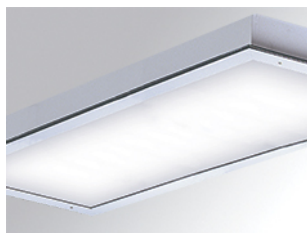


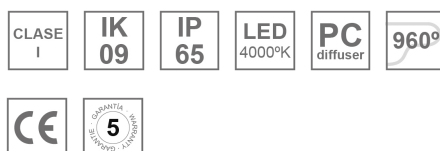
HM11284565OP840NW

**HERMETICA 1286x367 4500 IP65 NW OPAL WH.****Description:**

Recessed luminaire model HERMETICA 1286x367 4500 IP65 NW OPAL WH., LAMP brand. Made of white-lacquered steel plate. Outer frame made of extruded aluminium. Model for lamp LED MID-POWER, with neutral white color temperature and built-in electronic equipment control gear included. With opal polycarbonate diffuser. IP65, IK09 protection rating. Insulation class I. Can be opened for maintenance from below.

Installation: Recessed**TECHNICAL SPECIFICATIONS:**

Light output:	4.075 lm	°K :	4000
Plum:	34,1W	CRI :	80
Efficacy:	119,5 lm/w	MacAdam:	3
Type:	MID POWER LED	Power Supply:	220-240V 50/60Hz
LED Lifetime:	60.000 L80 B10 (Ta=25°C)	Gear:	Electronic
Power:	30.8W		

Light output tolerance +/- 10%**CUSTOM MADE OPTIONS:**

HM11284565OP840NW

HERMETICA 1286x367 4500 IP65 NW OPAL WH.

PHOTOMETRIC DATA :

