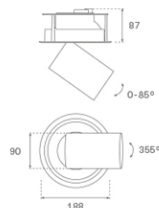
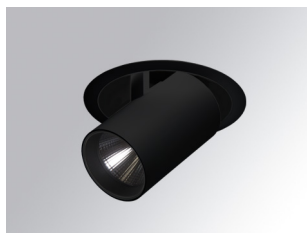


HANCE DOWNLIGHT

HD2SR40SP840NB



HANCE G2 DOWN SEMIREC 4000 NW SP BK

Description:

LAMP multidirectional semi-recessed downlight HANCE G2 DOWN SEMIREC 4000. Allowing 355° rotation and tilting up to 85°. Body and frame made of die-cast aluminium for proper thermal management. Black polycarbonate injection moulded anti-glare ring. 20° spot reflector. LED COB, 4000K and CRI80. Electronic ON OFF control gear included. IP20, IK07 ratings. Insulation Class II. LED life time: 72.000 L80B10 (Ta=25°C). Available finishes: Textured white and textured black.

Finish: Texturised black RAL 9011

Installation: Recessed

TECHNICAL SPECIFICATIONS:

Light output:	4.694 lm	°K :	4000
Plum:	36,7W	CRI :	80
Efficacy:	127,9 lm/w	R9 :	64
UGR:	<19	MacAdam:	3
Type:	COB	Power Supply:	220-240V 50/60Hz
LED Lifetime:	72.000 L80B10 (Ta=25°C)	Gear:	Electronic
Power:	33W		

Light output tolerance +/- 10%

**CUSTOM MADE OPTIONS:**

HD2SR40SP840NB **HANCE G2 DOWN SEMIREC 4000 NW SP BK**

PHOTOMETRIC DATA :

