

HANCE DOWNLIGHT

HD1RE10SS830DBW



HANCE DOWN REC 1000 WW SSP DALI WH.

Description:

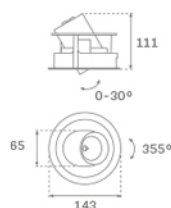
Multidirectional recessed downlight, model HANCE DOWN REC 1000 WW SSP WH., LAMP brand. Body and frame made of injected aluminium in textured white colour and decorative rings made of injected polycarbonate in white colour. Passive dissipation for a proper thermal management. Model with LED HI-POWER, with a warm white colour temperature and control gear included. With Superspot optics. It allows for a rotation of 355° and a tilt up to 30°. Insulation class II.

Finish: Texturised white RAL 9010

Weight: 750 g

IEE : A+

Installation: Recessed

**TECHNICAL SPECIFICATIONS:**

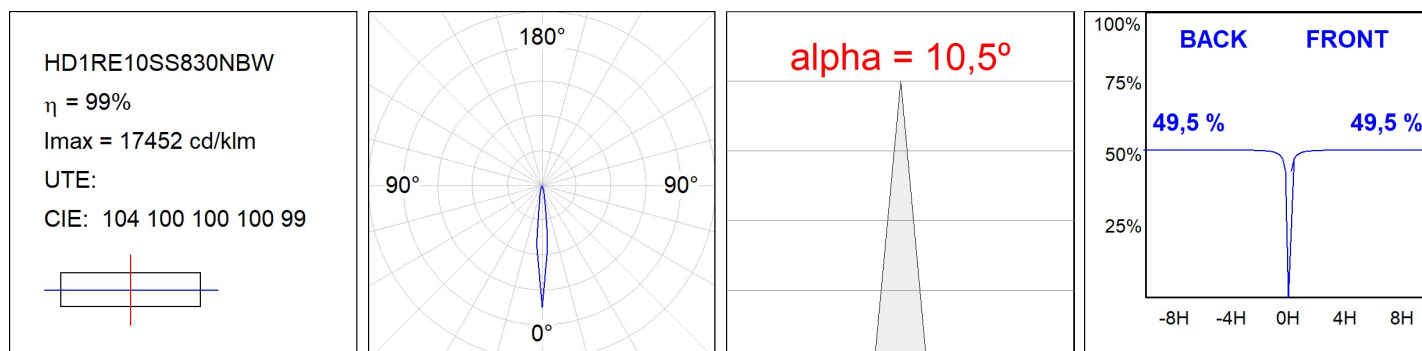
Light output:	545 lm	°K :	3000
Plum:	9W	CRI :	80
Efficacy:	63 lm/w	MacAdam:	3
Type:	HIGH POWER CREE	Alimentación:	100-240V 50/60Hz
LED Lifetime:	51.000 L80	Gear:	Adjustable DALI
Power:	7W		

**CUSTOM MADE OPTIONS:**

HD1RE10SS830DBW

HANCE DOWN REC 1000 WW SSP DALI WH.

PHOTOMETRIC DATA :



ACCESORIES :

Optical

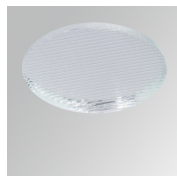


Product code:

HSCU50

Description:

HANCE 1000/2000 ACC. CUTTING BEAM



Product code:

HSEL50

Description:

HANCE 1000/2000 ACC. ELIPTICAL LENS



Product code:

HSRI65B

Description:

HANCE 1000/2000 ACC. RING DECO BK.



Product code:

HSRI65C

Description:

HANCE 1000/2000 ACC. RING DECO CO.



Product code:

HSRI65M

Description:

HANCE 1000/2000 ACC. RING DECO MET.



Product code:

HSRI65W

Description:

HANCE 1000/2000 ACC. RING DECO WH.