

GA235SP840NI



GAP G2 3600 NW SP INOX

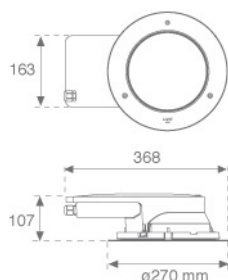
Description:

Outdoor recessed Downlight/Uplight model GAP G2 3600, LAMP brand. Made of injected aluminium, with a cataphoresis treatment, lacquered in black colour, tempered glass and exterior ring made of stainless steel AISI 316. Model with HI-POWER LED, with 4000K colour temperature, CRI 80 and control gear included. With Spot optics. It allows for a rotation from 0° to 90°, and a tilt between -30° and 30°. With a grades of protection IP67, IK10. Insulation class I. Lifetime: 60.000 L90 B10

Finish: Stainless steel AISI 316

Weight: 3.800 g

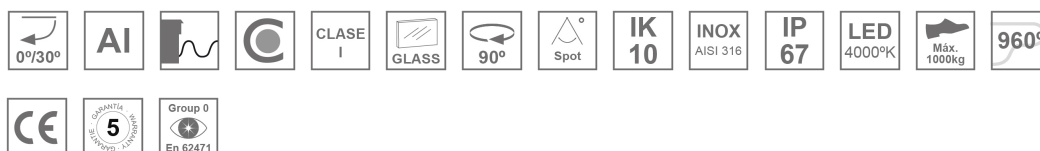
Installation: Floor recessed



TECHNICAL SPECIFICATIONS:

| | | | |
|----------------------|--------------------------|----------------------|------------------|
| Light output: | 2.944 lm | °K : | 4000 |
| Plum: | 33,5W | CRI : | 80 |
| Efficacy: | 87,9 lm/w | MacAdam: | 3 |
| Type: | HIGH POWER LED | Power Supply: | 220-240V 50/60Hz |
| LED Lifetime: | 60.000 L90 B10 (Ta=25°C) | Gear: | Electronic |
| Power: | 30W | | |

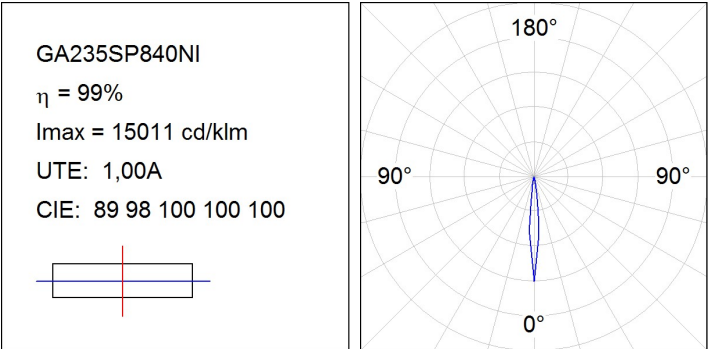
Light output tolerance +/- 10%



CUSTOM MADE OPTIONS:



PHOTOMETRIC DATA :



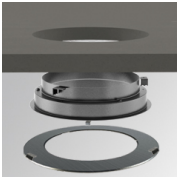
ACCESORIES :

Assembly



Product code:
GAREBOB

Description:
GAP ACC. REC BOX



Product code:
GARERIRDM

Description:
GAP ACC. REC CEILING RING

