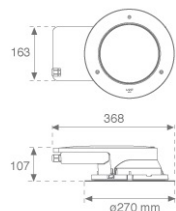


## GA230SP840NI



## GAP G2 2800 NW SP INOX

## Description:

Outdoor recessed Downlight/Uplight model GAP G2 2800, LAMP brand. Made of injected aluminium, with a cataphoresis treatment, lacquered in black colour, tempered glass and exterior ring made of stainless steel AISI 316. Model with HI-POWER LED, with 4000K colour temperature, CRI 80 and control gear included. With Spot optics. It allows for a rotation from 0° to 90°, and a tilt between -30° and 30°. With a grades of protection IP67, IK10. Insulation class I. Lifetime: 50.000 L90 B10

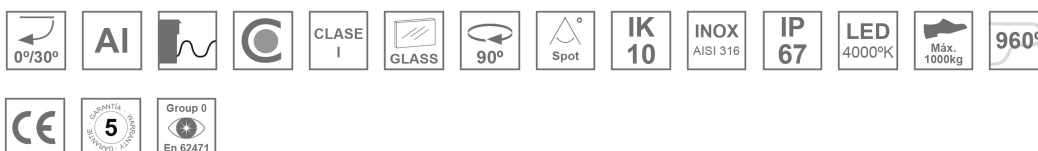
**Finish:** Stainless steel AISI 316

**Weight:** 3.800 g

**Installation:** Floor recessed

## TECHNICAL SPECIFICATIONS:

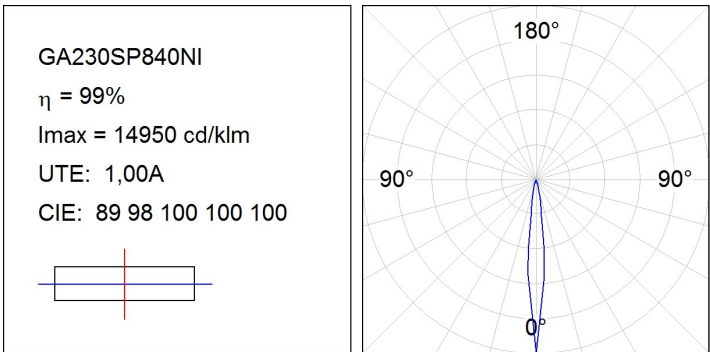
<b>Light output:</b>	2.171 lm	<b>°K :</b>	4000
<b>Plum:</b>	23W	<b>CRI :</b>	80
<b>Efficacy:</b>	94,4 lm/w	<b>MacAdam:</b>	3
<b>Type:</b>	HIGH POWER LED	<b>Power Supply:</b>	220-240V 50/60Hz
<b>LED Lifetime:</b>	50.000 L90 B10 (Ta=25°C)	<b>Gear:</b>	Electronic
<b>Power:</b>	20W		

*Light output tolerance +/- 10%*


## CUSTOM MADE OPTIONS:



PHOTOMETRIC DATA :



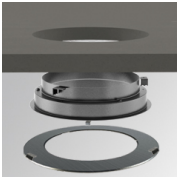
ACCESORIES :

Assembly



**Product code:**  
GAREBOB

**Description:**  
GAP ACC. REC BOX



**Product code:**  
GARERIRDM

**Description:**  
GAP ACC. REC CEILING RING

