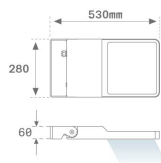
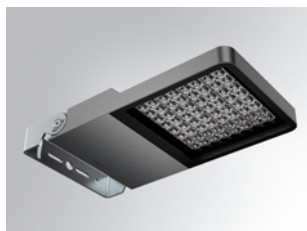


FLUT 280

FL214AS840NG



FLUT 280 G2 14000 8NW ASYM GR.

Description:

Surface mounting outdoor luminaire model FLUT 280 G2 ASYM, LAMP brand. Manufactured in aluminium injection body lacquered and serigraphed tempered glass. Made of AISI304 inox steel bended axle. Body's low height of 60mm. Model for HI-POWER LED, 4000K colour, CRI 80 and control gear included. With asymmetric optics. IP66 IK06 protection rating. Insulation class I. Its axle allows swivels between 90° and -30°. Lifetime: 80.000 L80 B10. BUG Rate: B2 U0 G2, ULOR 0%. Available finishes: anthracite and texturized grey.

Finish: Texturised grey

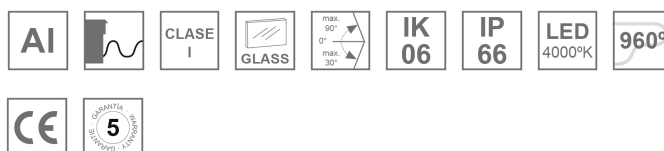
Weight: 7.944 g

Maximum surface exposed to wind: 0.12 M2

Installation: Surface

TECHNICAL SPECIFICATIONS:

Light output:	12.220 lm	°K :	4000
Plum:	97,7W	CRI :	80
Efficacy:	125,1 lm/w	MacAdam:	4
Type:	HIGH POWER LED	Power Supply:	220-240V 50/60Hz
LED Lifetime:	80.000 L80 B10 (Ta=25°C)	Gear:	Electronic
Power:	89W		

Light output tolerance +/- 10%


CUSTOM MADE OPTIONS:

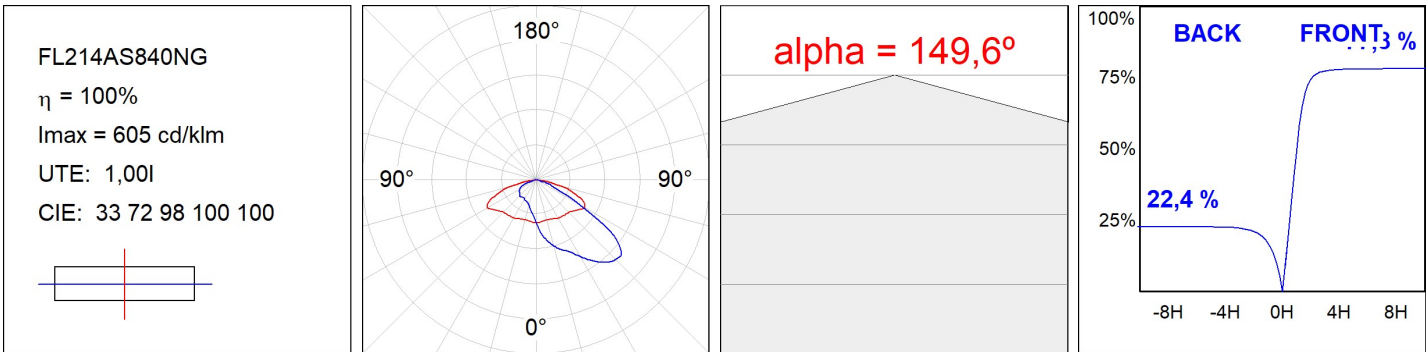


FLUT 280

FL214AS840NG

FLUT 280 G2 14000 8NW ASYM GR.

PHOTOMETRIC DATA :



ACCESORIES :

Support

**Product code:**

COARDB120A

COARIN120A

Description:

ACC. CO ARM DB 120-130 ANT.

ACC. CO ARM IND 120-130 ANT.

**Product code:**

COARDB120G

COARIN120G

Description:

ACC. CO ARM DB 120-130 GR.

ACC. CO ARM IND 120-130 GR.

**Product code:**

COARIN060A

Description:

ACC. CO ARM IND 60-135 ANT.

**Product code:**

COARIN060G

Description:

ACC. CO ARM IND 60-135 GR.

**Product code:**

COARLODB60A

COARLODB76A

Description:

ACC. CO ARM LONG DB Ø60 ANT.

ACC. CO ARM LONG DB Ø76 ANT.

**Product code:**

COARLODB60G

COARLODB76G

Description:

ACC. CO ARM LONG DB Ø60 GR.

ACC. CO ARM LONG DB Ø76 GR.

**Product code:**

COARLOIN60A

COARLOIN76A

Description:

ACC. CO ARM LONG IND Ø60 ANT.

ACC. CO ARM LONG IND Ø76 ANT.

**Product code:**

COARLOIN60G

COARLOIN76G

Description:

ACC. CO ARM LONG IND Ø60 GR.

ACC. CO ARM LONG IND Ø76 GR.

**Product code:**

COARLOINT080A

Description:

ACC. CO ARM LONG INT ANT.

**Product code:**

COARLOINT080G

Description:

ACC. CO ARM LONG INT GR.

FLUT 280



Product code:
COARSHDB60A
COARSHDB76A

Description:
ACC. CO ARM SHORT DB Ø60 ANT.
ACC. CO ARM SHORT DB Ø76 ANT.



Product code:
COARSHDB60G
COARSHDB76G

Description:
ACC. CO ARM SHORT DB Ø60 GR.
ACC. CO ARM SHORT DB Ø76 GR.



Product code:
COARSHIN60A
COARSHIN76A

Description:
ACC. CO ARM SHORT IND Ø60 ANT.
ACC. CO ARM SHORT IND Ø76 ANT.



Product code:
COARSHIN60G
COARSHIN76G

Description:
ACC. CO ARM SHORT IND Ø60 GR.
ACC. CO ARM SHORT IND Ø76 GR.



Product code:
COARSHINT080A

Description:
ACC. CO ARM SHORT INT ANT.



Product code:
COARSHINT080G

Description:
ACC. CO ARM SHORT INT GR.



Product code:
FXARWAA

Description:
ACC. FX ARM WALL ANT.



Product code:
FXARWAG

Description:
ACC. FX ARM WALL GR.