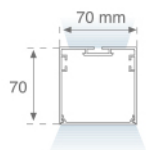


F71SU120MOIO840NW

**FIL 70 OPAL D/I SUS 3900 NW WH.****Description:**

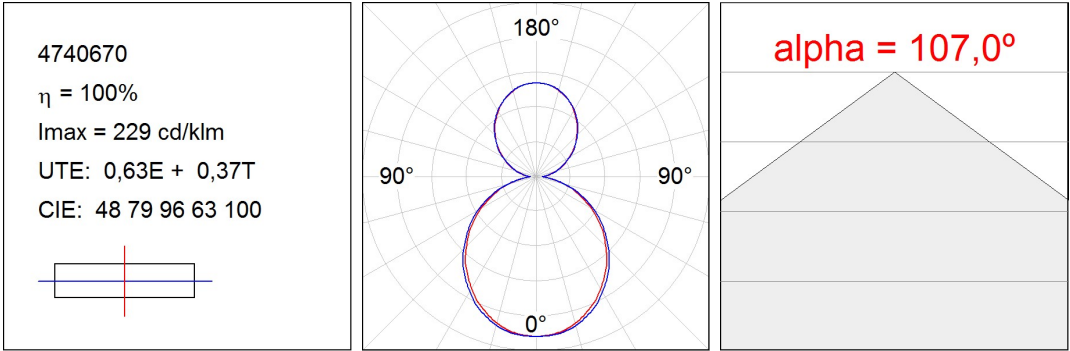
Suspended or mounted surface luminaire model FIL 70 OPAL D/I SUS 3900 NW WH., LAMP brand. Made of matt white painted extruded aluminium with Polycarbonate opal difusser. Model for LED MID-POWER with neutral white colour temperature and control gear included. Insulation class I. IP42 protection rating. Photobiological safety group 0. Environmental Product Declaration - EPD@available, according to UNE-EN ISO 9001:2015 and UNE-EN ISO 14001:2015.

Finish: Matte white RAL 9010**Dimensions:** 1.162 x 70 x 70 mm**Weight:** 2.846 g**Installation:** Suspended**TECHNICAL SPECIFICATIONS:**

Light output:	3.345 lm	°K :	4000
Plum:	30,1W	CRI :	80
Efficacy:	111,1 lm/w	MacAdam:	3
Type:	MID POWER LED	Power Supply:	220-240V 50/60Hz
LED Lifetime:	50.000 L80 B10 (Ta=25°C)	Gear:	Electronic
Power:	27W		

Light output tolerance +/- 10%**CUSTOM MADE OPTIONS:**

PHOTOMETRIC DATA :



ACCESORIES :
Assembly**Product code:**

ELWRST

Description:

ACC. ELECTROSTATICS WRIST STRAP

**Product code:**

F7COSUX/MMG

F7COSUX/MMW

F7PRSUX/MMG

F7PRSUX/MMW

Description:

FIL 70 ACC. COVER X/MM GR.

FIL 70 ACC. COVER X/MM WH.

FIL 70 ACC. SUS PROFILE X/MM GR.

FIL 70 ACC. SUS PROFILE X/MM WH.

**Product code:**

F7JO

Description:

ACC. INTM JOINT

**Product code:**

F7SFVCG

F7SFVCW

Description:

FIL 70 ACC. 90° WALL CORNER GR.

FIL 70 ACC. 90° WALL CORNER WH.

**Product code:**

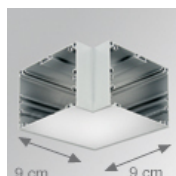
F7SUECG

F7SUECW

Description:

FIL 70 ACC. SUS END COVER PC GR.

FIL 70 ACC. SUS END COVER PC WH.

**Product code:**

F7SUHCG

F7SUHCW

Description:

FIL 70 ACC. SUS 90° CORNER GR.

FIL 70 ACC. SUS 90° CORNER WH.

ACCESORIES :
Suspension**Product code:**

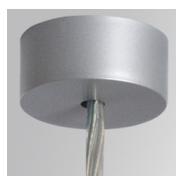
SFRG41G

SFRG41W

Description:

ACC. SUR FIXING NK.

ACC. SUR FIXING WH.

**Product code:**

SUCA4000DG

SUCA4000NG

Description:

ACC. ELEC 5P SUSP GR.

ACC. ELEC 3P SUSP GR.



Product code:

SUCA4000DW

SUCA4000NW

Description:

ACC. ELEC 5P SUSP WH.

ACC. ELEC 3P SUSP WH.



Product code:

SUCAEMDEG

Description:

ACC. ELECMEC SUR FIXING GR.



Product code:

SUCAEMDEW

Description:

ACC. ELECMEC SUR FIXING WH.



Product code:

SUCAEMFA1000NG

SUCAEMFA4000NG

Description:

ACC. ELECMEC QUICK SUSP 1M GR.

ACC. ELECMEC QUICK SUSP 4M GR.



Product code:

SUCAEMFA1000NW

SUCAEMFA4000NW

Description:

ACC. ELECMEC QUICK SUSP 1M WH.

ACC. ELECMEC QUICK SUSP 4M WH.



Product code:

SUCARG0100G

SUCARG0250G

SUCARG0500G

SUCARG1000G

Description:

ACC. ELECMEC RIGID SUSP 100MM GR.

ACC. ELECMEC RIGID SUSP 250MM GR.

ACC. ELECMEC RIGID SUSP 500MM GR.

ACC. ELECMEC RIGID SUSP 1000MM GR.



Product code:

SUCARG0100W

SUCARG0250W

SUCARG0500W

SUCARG1000W

Description:

ACC. ELECMEC RIGID SUSP 100MM WH.

ACC. ELECMEC RIGID SUSP 250MM WH.

ACC. ELECMEC RIGID SUSP 500MM WH.

ACC. ELECMEC RIGID SUSP 1000MM WH.



Product code:

SUCAWI1000DG

SUCAWI4000DG

Description:

ACC. ELECMEC QUICK SUSP 1M 5P GR.

ACC. ELECMEC QUICK SUSP 4M 5P GR.



Product code:
SUCAWI1000DW
SUCAWI4000DW

Description:
ACC. ELECMEC QUICK SUSP 1M 5P WH.
ACC. ELECMEC QUICK SUSP 4M 5P WH.



Product code:
SURG0100W
SURG0250W
SURG0500W
SURG1000W

Description:
ACC. RIGID SUSP 100MM WH.
ACC. RIGID SUSP 250MM WH.
ACC. RIGID SUSP 500MM WH.
ACC. RIGID SUSP 1000MM WH.



Product code:
SURGJO41W

Description:
ACC. RIGID SUSP FIXING JOINT WH.

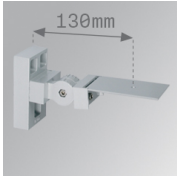


Product code:
SUWIDE1000G
SUWIDE4000G

Description:
ACC. QUICK STEEL CABLE 1M NK.
ACC. QUICK STEEL CABLE 4M NK.

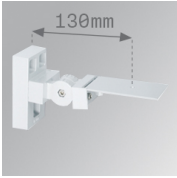
ACCESSORIES :

Support



Product code:
ARRO13G

Description:
ACC. ADJ WALL ARM GR.



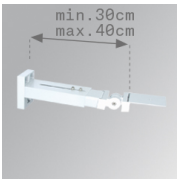
Product code:
ARRO13W

Description:
ACC. ADJ WALL ARM WH.



Product code:
ARROEX40G

Description:
ACC. ADJ EXTEN WALL ARM GR.



Product code:
ARROEX40W

Description:
ACC. ADJ EXTEN WALL ARM WH.

FIL 70



Product code:

F5FX75G

F5FX75W

Description:

ACC. WALL BRACKET 75MM GR.

ACC. WALL BRACKET 75MM WH.

ACCESORIES :

Optical



Product code:

F7DIX/MMOP

Description:

FIL 70 ACC. OPAL DIFFUSER X/MM

