

F71SF200HOTA830DW



FIL 70 TECH ASYM SUS 2M 6400 WW DA WH

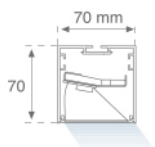
Description:

Structure saillie pour suspendre ou fixation plafond modèle FIL 70 TECH ASYM SUS 2M 6400 WW DA WH., de la marque LAMP. Fabriqué en extrusion d'aluminium peint en blanc satiné. Modèle avec LED MID-POWER, et température de couleur blanc chaud et driver électronique DALI incorporé. Isolement Classe I. Déclaration environnementale de produit - EPD® disponible, conformément aux normes UNE-EN ISO 9001:2015 et UNE-EN ISO 14001:2015.

Finition: Blanc mat RAL 9010

Dimensions: 2.000 x 70 x 70 mm

Poids: 4.616 g



Installation: Suspendu

SPÉCIFICATIONS TECHNIQUES:


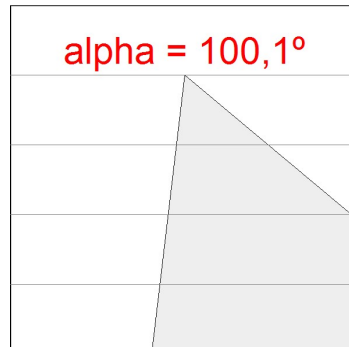
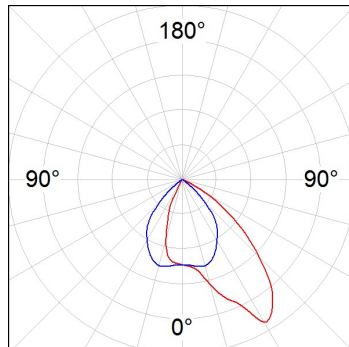
Flux lumineux:	4.064 lm	°K :	3000
Plum:	44,7W	IRC :	80
Efficacité:	90,9 lm/w	MacAdam:	3
UGR:	<19	Alimentation:	220-240V 50/60Hz
Type:	MID POWER LED	Équipement:	Réglable DALI
Durée de vie LED:	50.000 L80 B10 (Ta=25°C)		
Puissance:	42W		

Tolérance de flux lumineux +/- 10%

**OPTIONS PERSONNALISABLES:**

DONNÉES PHOTOMÉTRIQUES :

14741230
 $\eta = 100\%$
 $I_{max} = 949 \text{ cd/klm}$
 UTE: 1,00B + 0,00T
 CIE: 71 98 100 100 100

H (m)	D (m)	E _{max}	E _{med}
1	2,39	2596	809
2	4,77	649	202
3	7,16	288	90
4	9,54	162	51

ACCESSOIRES :

Montage



Code produit:

ELWRST

Description:

ACC. ELECTROSTATICS WRIST STRAP



Code produit:

F7COSUX/MMG

F7COSUX/MMW

F7PRSUX/MMG

F7PRSUX/MMW

Description:

FIL 70 ACC. COVER X/MM GR.

FIL 70 ACC. COVER X/MM WH.

FIL 70 ACC. SUS PROFILE X/MM GR.

FIL 70 ACC. SUS PROFILE X/MM WH.



Code produit:

F7JO

Description:

ACC. INTM JOINT



Code produit:

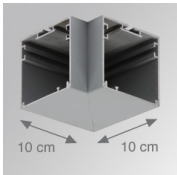
F7SUECG

F7SUECW

Description:

FIL 70 ACC. SUS END COVER PC GR.

FIL 70 ACC. SUS END COVER PC WH.



Code produit:

F7TESUHCG

F7TESUHCW

Description:

FIL 70 TECH ACC. SUS 90° CORNER GR.

FIL 70 TECH ACC. SUS 90° CORNER WH.

ACCESSOIRES :

Suspension



Code produit:

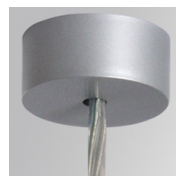
SFRG41G

SFRG41W

Description:

ACC. SUR FIXING NK.

ACC. SUR FIXING WH.



Code produit:

SUCA4000DG

SUCA4000NG

Description:

ACC. ELEC 5P SUSP GR.

ACC. ELEC 3P SUSP GR.



Code produit:
SUCA4000DW
SUCA4000NW

Description:
ACC. ELEC 5P SUSP WH.
ACC. ELEC 3P SUSP WH.



Code produit:
SUCAEMDEG

Description:
ACC. ELECMEC SUR FIXING GR.



Code produit:
SUCAEMDEW

Description:
ACC. ELECMEC SUR FIXING WH.



Code produit:
SUCAEMFA1000NG
SUCAEMFA4000NG

Description:
ACC. ELECMEC QUICK SUSP 1M GR.
ACC. ELECMEC QUICK SUSP 4M GR.



Code produit:
SUCAEMFA1000NW
SUCAEMFA4000NW

Description:
ACC. ELECMEC QUICK SUSP 1M WH.
ACC. ELECMEC QUICK SUSP 4M WH.



Code produit:
SUCARG0100G
SUCARG0250G
SUCARG0500G
SUCARG1000G

Description:
ACC. ELECMEC RIGID SUSP 100MM GR.
ACC. ELECMEC RIGID SUSP 250MM GR.
ACC. ELECMEC RIGID SUSP 500MM GR.
ACC. ELECMEC RIGID SUSP 1000MM GR.



Code produit:
SUCARG0100W
SUCARG0250W
SUCARG0500W
SUCARG1000W

Description:
ACC. ELECMEC RIGID SUSP 100MM WH.
ACC. ELECMEC RIGID SUSP 250MM WH.
ACC. ELECMEC RIGID SUSP 500MM WH.
ACC. ELECMEC RIGID SUSP 1000MM WH.



Code produit:
SUCAWI1000DG
SUCAWI4000DG

Description:
ACC. ELECMEC QUICK SUSP 1M 5P GR.
ACC. ELECMEC QUICK SUSP 4M 5P GR.



Code produit:

SUCAWI1000DW
SUCAWI4000DW

Description:

ACC. ELECMEC QUICK SUSP 1M 5P WH.
ACC. ELECMEC QUICK SUSP 4M 5P WH.

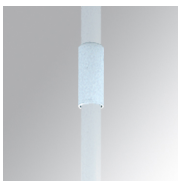


Code produit:

SURG0100W
SURG0250W
SURG0500W
SURG1000W

Description:

ACC. RIGID SUSP 100MM WH.
ACC. RIGID SUSP 250MM WH.
ACC. RIGID SUSP 500MM WH.
ACC. RIGID SUSP 1000MM WH.



Code produit:

SURGJO41W

Description:

ACC. RIGID SUSP FIXING JOINT WH.



Code produit:

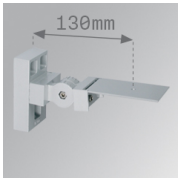
SUWIDE1000G
SUWIDE4000G

Description:

ACC. QUICK STEEL CABLE 1M NK.
ACC. QUICK STEEL CABLE 4M NK.

ACCESSOIRES :

Support

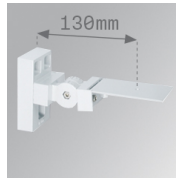


Code produit:

ARRO13G

Description:

ACC. ADJ WALL ARM GR.

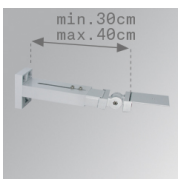


Code produit:

ARRO13W

Description:

ACC. ADJ WALL ARM WH.

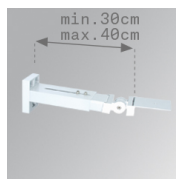


Code produit:

ARROEX40G

Description:

ACC. ADJ EXTEN WALL ARM GR.



Code produit:

ARROEX40W

Description:

ACC. ADJ EXTEN WALL ARM WH.



Code produit:

F5FX75G

F5FX75W

Description:

ACC. WALL BRACKET 75MM GR.

ACC. WALL BRACKET 75MM WH.