

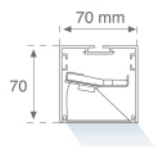
F71SF200HOTA830DW


FIL 70 TECH ASYM SUS 2M 6400 WW DA WH
Description:

Suspended or mounted surface luminaire FIL 70 TECH ASYM SUS 2M 6400 WW DA WH., LAMP brand. Made of satin white painted extruded aluminium with REDIL® OPTICS. Model for LED MID-POWER with warm white colour temperature and DALI electronic control gear included. Insulation class I. Environmental Product Declaration - EPD@available, according to UNE-EN ISO 9001:2015 and UNE-EN ISO 14001:2015.

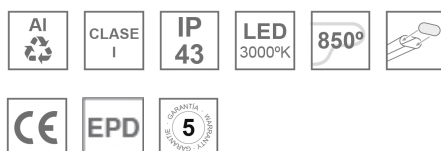
Finish: Matte white RAL 9010

Dimensions: 2.000 x 70 x 70 mm

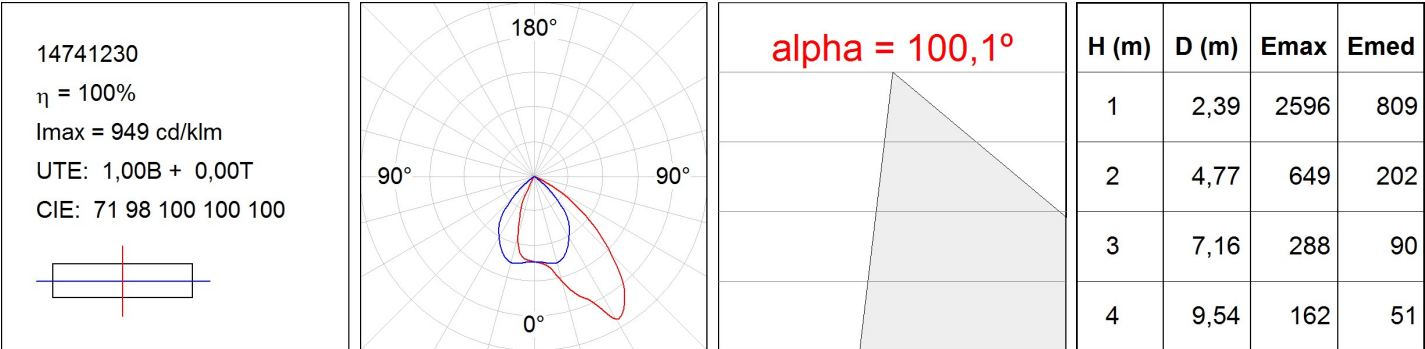
Weight: 4.616 g

Installation: Suspended

TECHNICAL SPECIFICATIONS:

Light output:	4.064 lm	°K :	3000
Plum:	44,7W	CRI :	80
Efficacy:	90,9 lm/w	MacAdam:	3
UGR:	<19	Power Supply:	220-240V 50/60Hz
Type:	MID POWER LED	Gear:	Adjustable DALI
LED Lifetime:	50.000 L80 B10 (Ta=25°C)		
Power:	42W		

Light output tolerance +/- 10%

CUSTOM MADE OPTIONS:


PHOTOMETRIC DATA :



ACCESORIES :
Assembly



Product code:
ELWRST

Description:
ACC. ELECTROSTATICS WRIST STRAP



Product code:
F7COSUX/MMG
F7COSUX/MMW
F7PRSUX/MMG
F7PRSUX/MMW

Description:
FIL 70 ACC. COVER X/MM GR.
FIL 70 ACC. COVER X/MM WH.
FIL 70 ACC. SUS PROFILE X/MM GR.
FIL 70 ACC. SUS PROFILE X/MM WH.



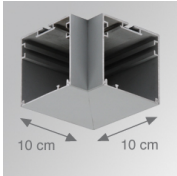
Product code:
F7JO

Description:
ACC. INTM JOINT



Product code:
F7SUECG
F7SUECW

Description:
FIL 70 ACC. SUS END COVER PC GR.
FIL 70 ACC. SUS END COVER PC WH.



Product code:
F7TESUHCG
F7TESUHCW

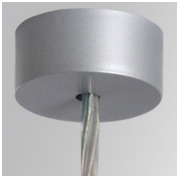
Description:
FIL 70 TECH ACC. SUS 90° CORNER GR.
FIL 70 TECH ACC. SUS 90° CORNER WH.

ACCESORIES :
Suspension



Product code:
SFRG41G
SFRG41W

Description:
ACC. SUR FIXING NK.
ACC. SUR FIXING WH.



Product code:
SUCA4000DG
SUCA4000NG

Description:
ACC. ELEC 5P SUSP GR.
ACC. ELEC 3P SUSP GR.



Product code:
SUCA4000DW
SUCA4000NW

Description:
ACC. ELEC 5P SUSP WH.
ACC. ELEC 3P SUSP WH.



Product code:
SUCAEMDEG

Description:
ACC. ELECMEC SUR FIXING GR.



Product code:
SUCAEMDEW

Description:
ACC. ELECMEC SUR FIXING WH.



Product code:
SUCAEMFA1000NG
SUCAEMFA4000NG

Description:
ACC. ELECMEC QUICK SUSP 1M GR.
ACC. ELECMEC QUICK SUSP 4M GR.



Product code:
SUCAEMFA1000NW
SUCAEMFA4000NW

Description:
ACC. ELECMEC QUICK SUSP 1M WH.
ACC. ELECMEC QUICK SUSP 4M WH.



Product code:
SUCARG0100G
SUCARG0250G
SUCARG0500G
SUCARG1000G

Description:
ACC. ELECMEC RIGID SUSP 100MM GR.
ACC. ELECMEC RIGID SUSP 250MM GR.
ACC. ELECMEC RIGID SUSP 500MM GR.
ACC. ELECMEC RIGID SUSP 1000MM GR.



Product code:
SUCARG0100W
SUCARG0250W
SUCARG0500W
SUCARG1000W

Description:
ACC. ELECMEC RIGID SUSP 100MM WH.
ACC. ELECMEC RIGID SUSP 250MM WH.
ACC. ELECMEC RIGID SUSP 500MM WH.
ACC. ELECMEC RIGID SUSP 1000MM WH.



Product code:
SUCAWI1000DG
SUCAWI4000DG

Description:
ACC. ELECMEC QUICK SUSP 1M 5P GR.
ACC. ELECMEC QUICK SUSP 4M 5P GR.



Product code:

SUCAWI1000DW

SUCAWI4000DW

Description:

ACC. ELECMEC QUICK SUSP 1M 5P WH.

ACC. ELECMEC QUICK SUSP 4M 5P WH.



Product code:

SURG0100W

SURG0250W

SURG0500W

SURG1000W

Description:

ACC. RIGID SUSP 100MM WH.

ACC. RIGID SUSP 250MM WH.

ACC. RIGID SUSP 500MM WH.

ACC. RIGID SUSP 1000MM WH.



Product code:

SURGJO41W

Description:

ACC. RIGID SUSP FIXING JOINT WH.



Product code:

SUWIDE1000G

SUWIDE4000G

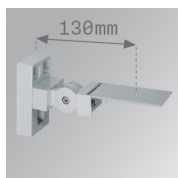
Description:

ACC. QUICK STEEL CABLE 1M NK.

ACC. QUICK STEEL CABLE 4M NK.

ACCESSORIES :

Support

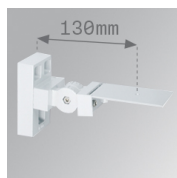


Product code:

ARRO13G

Description:

ACC. ADJ WALL ARM GR.

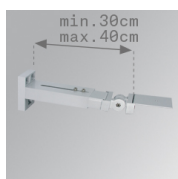


Product code:

ARRO13W

Description:

ACC. ADJ WALL ARM WH.

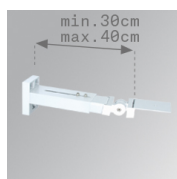


Product code:

ARROEX40G

Description:

ACC. ADJ EXTEN WALL ARM GR.



Product code:

ARROEX40W

Description:

ACC. ADJ EXTEN WALL ARM WH.



Product code:

F5FX75G
F5FX75W

Description:

ACC. WALL BRACKET 75MM GR.
ACC. WALL BRACKET 75MM WH.