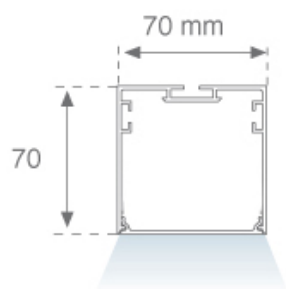


F71SF170LOOP830NG

**FIL 70 OPAL SUS 3900 WW GR.****Description:**

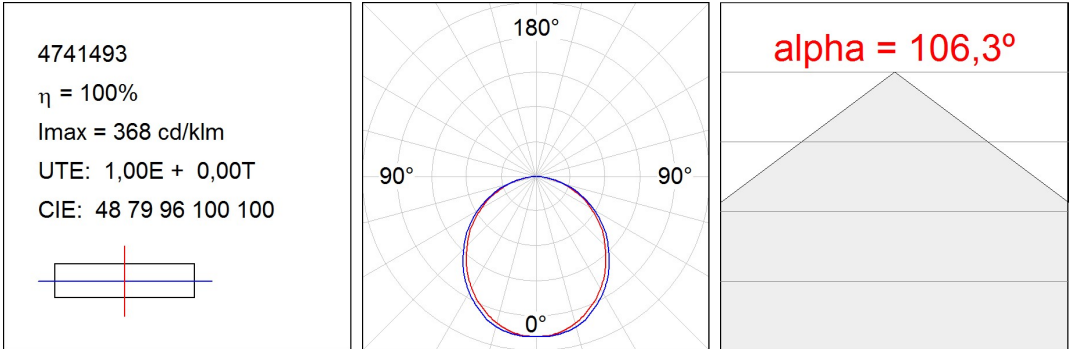
Suspended or mounted surface luminaire model FIL 70 OPAL SUS 3900 WW GR., LAMP brand. Made of satin grey painted extruded aluminium with opal polycarbonate diffuser. Model for LED MID-POWER with warm white colour temperature and control gear included. IP43, IK06 protection rating. Insulation class I. Photobiological safety group 0. Environmental Product Declaration - EPD@available, according to UNE-EN ISO 9001:2015 and UNE-EN ISO 14001:2015.

Finish: Gloss grey**Dimensions:** 1.743 x 70 x 70 mm**Weight:** 4.114 g**Installation:** Surface**TECHNICAL SPECIFICATIONS:**

Light output:	2.988 lm	°K :	3000
Plum:	29,7W	CRI :	80
Efficacy:	100,6 lm/w	MacAdam:	3
Type:	MID POWER LED	Power Supply:	220-240V 50/60Hz
LED Lifetime:	50.000 L80 B10 (Ta=25°C)	Gear:	Electronic
Power:	25W		

Light output tolerance +/- 10%**CUSTOM MADE OPTIONS:**

PHOTOMETRIC DATA :



ACCESORIES :
Assembly**Product code:**

ELWRST

Description:

ACC. ELECTROSTATICS WRIST STRAP

**Product code:**

F7COSUX/MMG

F7COSUX/MMW

F7PRSUX/MMG

F7PRSUX/MMW

Description:

FIL 70 ACC. COVER X/MM GR.

FIL 70 ACC. COVER X/MM WH.

FIL 70 ACC. SUS PROFILE X/MM GR.

FIL 70 ACC. SUS PROFILE X/MM WH.

**Product code:**

F7JO

Description:

ACC. INTM JOINT

**Product code:**

F7SFVCG

F7SFVCW

Description:

FIL 70 ACC. 90° WALL CORNER GR.

FIL 70 ACC. 90° WALL CORNER WH.

**Product code:**

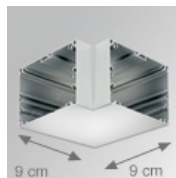
F7SUECG

F7SUECW

Description:

FIL 70 ACC. SUS END COVER PC GR.

FIL 70 ACC. SUS END COVER PC WH.

**Product code:**

F7SUHCG

F7SUHCW

Description:

FIL 70 ACC. SUS 90° CORNER GR.

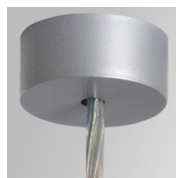
FIL 70 ACC. SUS 90° CORNER WH.

ACCESORIES :
Suspension**Product code:**

SFRG41G

Description:

ACC. SUR FIXING NK.

**Product code:**

SUCA4000DG

SUCA4000NG

Description:

ACC. ELEC 5P SUSP GR.

ACC. ELEC 3P SUSP GR.



Product code:
SUCADMDEG

Description:
ACC. ELECMEC SUR FIXING GR.



Product code:
SUCADMFA1000NG
SUCADMFA4000NG

Description:
ACC. ELECMEC QUICK SUSP 1M GR.
ACC. ELECMEC QUICK SUSP 4M GR.



Product code:
SUCARG0100G
SUCARG0250G
SUCARG0500G
SUCARG1000G

Description:
ACC. ELECMEC RIGID SUSP 100MM GR.
ACC. ELECMEC RIGID SUSP 250MM GR.
ACC. ELECMEC RIGID SUSP 500MM GR.
ACC. ELECMEC RIGID SUSP 1000MM GR.



Product code:
SUWIDE1000G
SUWIDE4000G

Description:
ACC. QUICK STEEL CABLE 1M NK.
ACC. QUICK STEEL CABLE 4M NK.

ACCESORIES :

Support



Product code:
F5FX75G

Description:
ACC. WALL BRACKET 75MM GR.

ACCESORIES :

Optical



Product code:
F7DIX/MMOP

Description:
FIL 70 ACC. OPAL DIFFUSER X/MM

