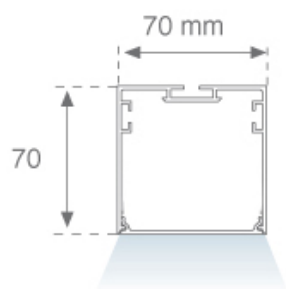


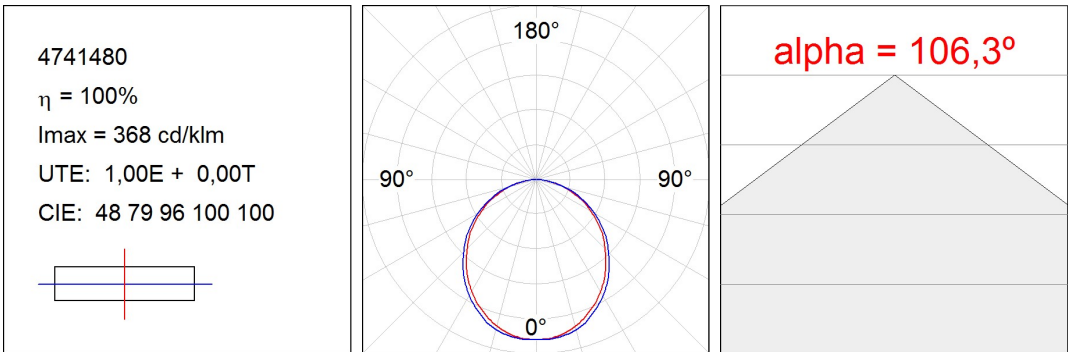
F71SF120LOOP830DW

**FIL 70 OPAL SUS 2600 WW DALI WH.****Description:**

Suspended or mounted surface luminaire model FIL 70 OPAL SUS 2600 WW DALI WH., LAMP brand. Made of matt white painted extruded aluminium with opal polycarbonate diffuser. Model for LED MID-POWER with warm white colour temperature and control DALI gear included. IP43, IK06 protection rating. Insulation class I. Photobiological safety group 0. Environmental Product Declaration - EPD®available, according to UNE-EN ISO 9001:2015 and UNE-EN ISO 14001:2015.

Finish: Matte white RAL 9010**Dimensions:** 1.162 x 70 x 70 mm**Weight:** 2.536 g**Installation:** Surface**TECHNICAL SPECIFICATIONS:****Light output:** 1.992 lm**°K :** 3000**Plum:** 19,2W**CRI :** 80**Efficacy:** 103,8 lm/w**MacAdam:** 3**Type:** MID POWER LED**Power Supply:** 220-240V 50/60Hz**LED Lifetime:** 60.000 L80 B10 (Ta=25°C)**Gear:** Adjustable DALI**Power:** 17W**Light output tolerance +/- 10%****CUSTOM MADE OPTIONS:**

PHOTOMETRIC DATA :



ACCESORIES :
Assembly**Product code:**

ELWRST

Description:

ACC. ELECTROSTATICS WRIST STRAP

**Product code:**

F7COSUX/MMG

F7COSUX/MMW

F7PRSUX/MMG

F7PRSUX/MMW

Description:

FIL 70 ACC. COVER X/MM GR.

FIL 70 ACC. COVER X/MM WH.

FIL 70 ACC. SUS PROFILE X/MM GR.

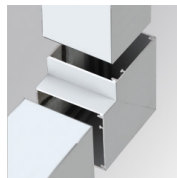
FIL 70 ACC. SUS PROFILE X/MM WH.

**Product code:**

F7JO

Description:

ACC. INTM JOINT

**Product code:**

F7SFVCG

F7SFVCW

Description:

FIL 70 ACC. 90° WALL CORNER GR.

FIL 70 ACC. 90° WALL CORNER WH.

**Product code:**

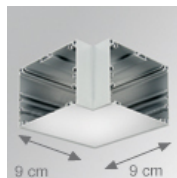
F7SUECG

F7SUECW

Description:

FIL 70 ACC. SUS END COVER PC GR.

FIL 70 ACC. SUS END COVER PC WH.

**Product code:**

F7SUHCG

F7SUHCW

Description:

FIL 70 ACC. SUS 90° CORNER GR.

FIL 70 ACC. SUS 90° CORNER WH.

ACCESORIES :
Suspension**Product code:**

SFRG41G

SFRG41W

Description:

ACC. SUR FIXING NK.

ACC. SUR FIXING WH.

**Product code:**

SUCA4000DW

SUCA4000NW

Description:

ACC. ELEC 5P SUSP WH.

ACC. ELEC 3P SUSP WH.



Product code:
SUCADMDEW

Description:
ACC. ELECMEC SUR FIXING WH.



Product code:
SUCAEMFA1000NW
SUCAEMFA4000NW

Description:
ACC. ELECMEC QUICK SUSP 1M WH.
ACC. ELECMEC QUICK SUSP 4M WH.



Product code:
SUCARG0100W
SUCARG0250W
SUCARG0500W
SUCARG1000W

Description:
ACC. ELECMEC RIGID SUSP 100MM WH.
ACC. ELECMEC RIGID SUSP 250MM WH.
ACC. ELECMEC RIGID SUSP 500MM WH.
ACC. ELECMEC RIGID SUSP 1000MM WH.



Product code:
SUCAWI1000DG
SUCAWI4000DG

Description:
ACC. ELECMEC QUICK SUSP 1M 5P GR.
ACC. ELECMEC QUICK SUSP 4M 5P GR.



Product code:
SUCAWI1000DW
SUCAWI4000DW

Description:
ACC. ELECMEC QUICK SUSP 1M 5P WH.
ACC. ELECMEC QUICK SUSP 4M 5P WH.



Product code:
SURG0100W
SURG0250W
SURG0500W
SURG1000W

Description:
ACC. RIGID SUSP 100MM WH.
ACC. RIGID SUSP 250MM WH.
ACC. RIGID SUSP 500MM WH.
ACC. RIGID SUSP 1000MM WH.



Product code:
SURGJO41W

Description:
ACC. RIGID SUSP FIXING JOINT WH.



Product code:
SUWIDE1000G
SUWIDE4000G

Description:
ACC. QUICK STEEL CABLE 1M NK.
ACC. QUICK STEEL CABLE 4M NK.

ACCESSORIES :

Support



Product code:

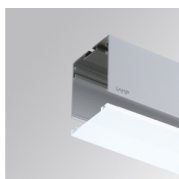
F5FX75W

Description:

ACC. WALL BRACKET 75MM WH.

ACCESORIES :

Optical



Product code:

F7DIX/MMOP

Description:

FIL 70 ACC. OPAL DIFFUSER X/MM

