

F71RE200MOTS830NW



FIL 70 TECH REC 2M 3200 WW WH.

Description:

Recessed structure model FIL 70 TECH REC 2M 3200 WW WH., LAMP brand. Made of matt white painted extruded aluminium. Model for MID-POWER LED with warm white colour temperature and control gear included, which consists of a two-phase reflection. Insulation class I. Photobiological safety group 0. Environmental Product Declaration - EPD@available, according to UNE-EN ISO 9001:2015 and UNE-EN ISO 14001:2015.

Finish: Matte white RAL 9010

Dimensions: 2.000 x 70 x 70 mm

Weight: 4.247 g

Installation: Recessed

Recessing measures: 2,012 x 78 x 85 mm
TECHNICAL SPECIFICATIONS:
Light output: 3.060 lm

°K : 3000

Plum: 26,8W

CRI : 80

Efficacy: 114,1 lm/w

MacAdam: 3

UGR: <19

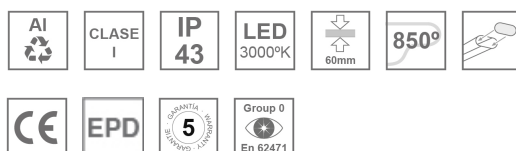
Power Supply: 220-240V 50/60Hz

Type: MID POWER LED

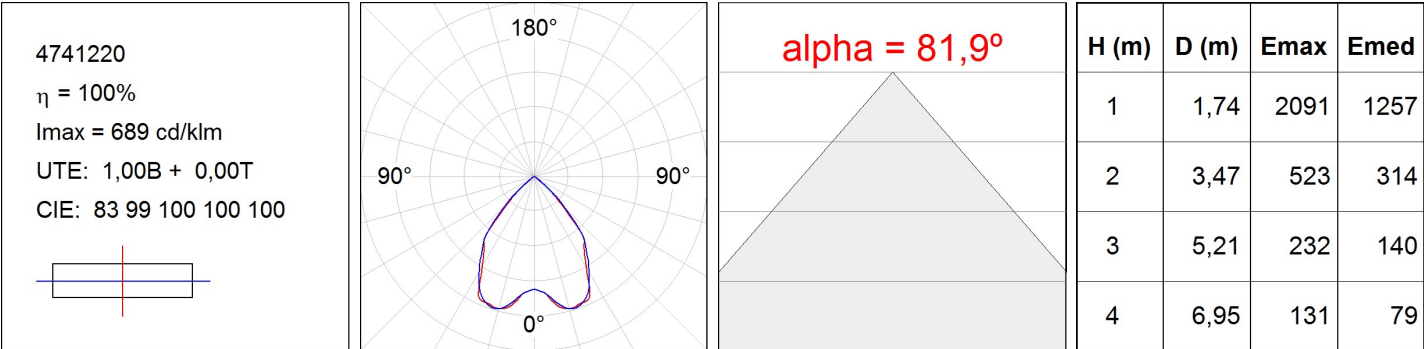
Gear: Electronic

LED Lifetime: 50.000 L80 B10 (Ta=25°C)

Power: 25W

Light output tolerance +/- 10%
**CUSTOM MADE OPTIONS:**

PHOTOMETRIC DATA :



ACCESORIES :
Assembly



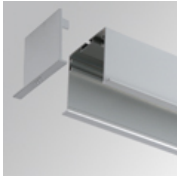
Product code:
ELWRST

Description:
ACC. ELECTROSTATICS WRIST STRAP



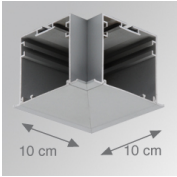
Product code:
F7JO

Description:
ACC. INTM JOINT



Product code:
F7REECG
F7REECW

Description:
FIL 70 ACC. REC END COVER GR.
FIL 70 ACC. REC END COVER WH.



Product code:
F7TEREHCG
F7TEREHCW

Description:
FIL 70 TECH ACC. REC 90° CORNER GR.
FIL 70 TECH ACC. REC 90° CORNER WH.

ACCESORIES :
Optical



Product code:
DIOPST1000

Description:
ACC. DIF. SOFT TECH OPAL