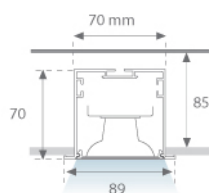


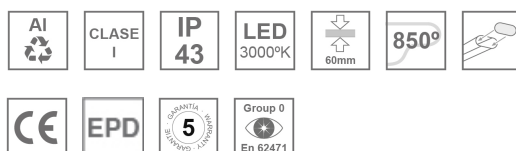
## F71RE200MOTS830NG



## FIL 70 TECH REC 2M 3200 WW GR.

**Description:**

Recessed structure model FIL 70 TECH REC 2M 3200 WW GR., LAMP brand. Made of satin grey painted extruded aluminium. Model for MID-POWER LED with warm white colour temperature and control gear included, which consists of a two-phase reflection. Insulation class I. hotobiological safety group 0. Environmental Product Declaration - EPD@available, according to UNE-EN ISO 9001:2015 and UNE-EN ISO 14001:2015.

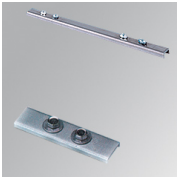
**Finish:** Gloss grey**Dimensions:** 2.000 x 70 x 70 mm**Weight:** 4.247 g**Installation:** Recessed**Recessing measures:** 2,012 x 78 x 85 mm**TECHNICAL SPECIFICATIONS:****Light output:** 3.060 lm**°K :** 3000**Plum:** 26,8W**CRI :** 80**Efficacy:** 114,1 lm/w**MacAdam:** 3**UGR:** <19**Power Supply:** 220-240V 50/60Hz**Type:** MID POWER LED**Gear:** Electronic**LED Lifetime:** 50.000 L80 B10 (Ta=25°C)**Power:** 25W**Light output tolerance +/- 10%****CUSTOM MADE OPTIONS:**

**ACCESORIES :**  
**Assembly**



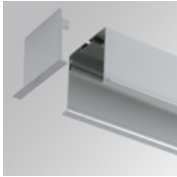
**Product code:**  
ELWRST

**Description:**  
ACC. ELECTROSTATICS WRIST STRAP



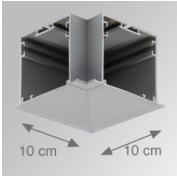
**Product code:**  
F7JO

**Description:**  
ACC. INTM JOINT



**Product code:**  
F7REECG  
F7REECW

**Description:**  
FIL 70 ACC. REC END COVER GR.  
FIL 70 ACC. REC END COVER WH.



**Product code:**  
F7TEREHCG  
F7TEREHCW

**Description:**  
FIL 70 TECH ACC. REC 90° CORNER GR.  
FIL 70 TECH ACC. REC 90° CORNER WH.

**ACCESORIES :**  
**Optical**



**Product code:**  
DIOPST1000

**Description:**  
ACC. DIF. SOFT TECH OPAL