

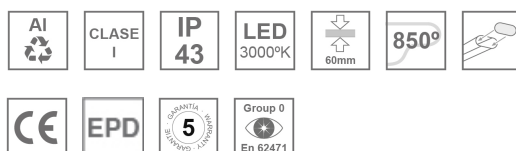
F71RE200MOTS830DG



FIL 70 TECH REC 2M 3200 WW DALI GR.

Description:

Recessed structure model FIL 70 TECH REC 2M 3200 WW DALI GR., LAMP brand. Made of satin grey painted extruded aluminium. Model for MID-POWER LED with warm white colour temperature and control DALI gear included, which consists of a two-phase reflection. Insulation class I. Photobiological safety group 0. Environmental Product Declaration - EPD@available, according to UNE-EN ISO 9001:2015 and UNE-EN ISO 14001:2015.

Finish: Gloss grey**Dimensions:** 2.000 x 70 x 70 mm**Weight:** 4.247 g**Installation:** Recessed**Recessing measures:** 2,012 x 78 x 85 mm**TECHNICAL SPECIFICATIONS:****Light output:** 3.060 lm**°K :** 3000**Plum:** 26,8W**CRI :** 80**Efficacy:** 114,1 lm/w**MacAdam:** 3**UGR:** <19**Power Supply:** 220-240V 50/60Hz**Type:** MID POWER LED**Gear:** Adjustable DALI**LED Lifetime:** 50.000 L80 B10 (Ta=25°C)**Power:** 25W**Light output tolerance +/- 10%****CUSTOM MADE OPTIONS:**

ACCESORIES :
Assembly



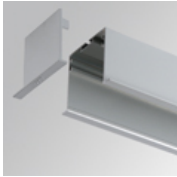
Product code:
ELWRST

Description:
ACC. ELECTROSTATICS WRIST STRAP



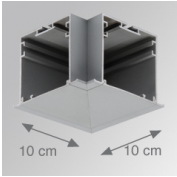
Product code:
F7JO

Description:
ACC. INTM JOINT



Product code:
F7REECG
F7REECW

Description:
FIL 70 ACC. REC END COVER GR.
FIL 70 ACC. REC END COVER WH.



Product code:
F7TEREHCG
F7TEREHCW

Description:
FIL 70 TECH ACC. REC 90° CORNER GR.
FIL 70 TECH ACC. REC 90° CORNER WH.

ACCESORIES :
Optical



Product code:
DIOPST1000

Description:
ACC. DIF. SOFT TECH OPAL