

F71RE200HOTA840NW



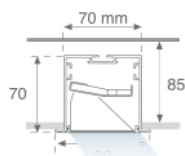
FIL 70 TECH ASYM REC 2M 6400 NW WH.

Description:

Recessed surface luminaire FIL 70 TECH ASYM REC 2M 6400 NW WH., LAMP brand. Made of matt white painted extruded aluminium with REDIL® OPTICS. Model for LED MID-POWER with neutral white colour temperature and electronic control gear included. Insulation class I. Environmental Product Declaration - EPD@available, according to UNE-EN ISO 9001:2015 and UNE-EN ISO 14001:2015.

Finish: Matte white RAL 9010

Dimensions: 2.000 x 70 x 70 mm

Weight: 4.830 g

Installation: Recessed

Recessing measures: 2,012 x 78 x 85 mm
TECHNICAL SPECIFICATIONS:
Light output: 4.064 lm

°K : 4000

Plum: 44,7W

CRI : 80

Efficacy: 90,9 lm/w

MacAdam: 3

UGR: <19

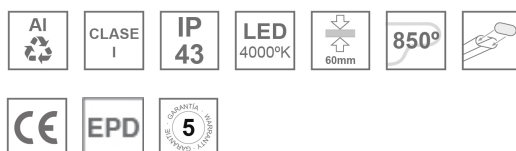
Power Supply: 220-240V 50/60Hz

Type: MID POWER LED

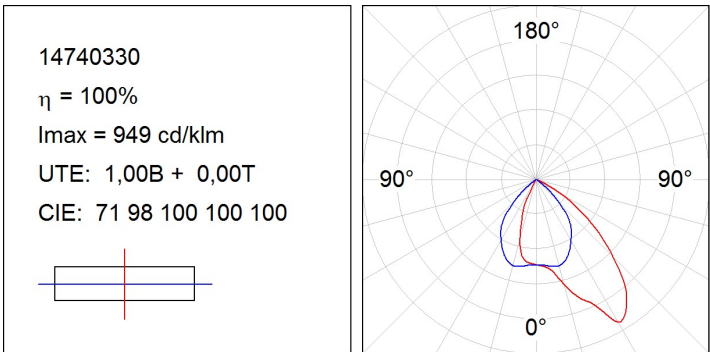
Gear: Electronic

LED Lifetime: 50.000 L80 B10 (Ta=25°C)

Power: 42W

Light output tolerance +/- 10%
**CUSTOM MADE OPTIONS:**

PHOTOMETRIC DATA :

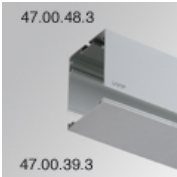


ACCESORIES :
Assembly



Product code:
ELWRST

Description:
ACC. ELECTROSTATICS WRIST STRAP



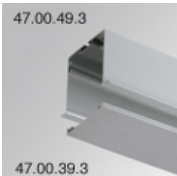
Product code:
F7COSUX/MMG
F7COSUX/MMW

Description:
FIL 70 ACC. COVER X/MM GR.
FIL 70 ACC. COVER X/MM WH.



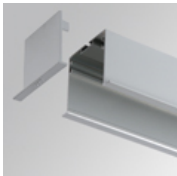
Product code:
F7JO

Description:
ACC. INTM JOINT



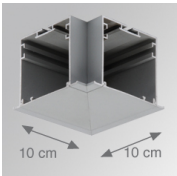
Product code:
F7PRREX/MMG
F7PRREX/MMW

Description:
FIL 70 ACC. REC PROFILE X/MM GR.
FIL 70 ACC. REC PROFILE X/MM WH.



Product code:
F7REECG
F7REECW

Description:
FIL 70 ACC. REC END COVER GR.
FIL 70 ACC. REC END COVER WH.



Product code:
F7TEREHCG
F7TEREHCW

Description:
FIL 70 TECH ACC. REC 90° CORNER GR.
FIL 70 TECH ACC. REC 90° CORNER WH.