

F71RE170LOOP840NW



FIL 70 OPAL REC 3900 NW WH.

Description:

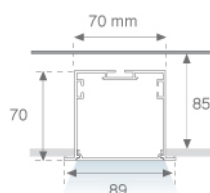
Recessed mounted structure model FIL 70 OPAL REC 3900 NW WH., LAMP brand. Made of matt white lacquered extruded aluminium and with opal diffuser. Model for MID-POWER LED, with neutral white colour temperature and electronic control gear included. IP43, IK06 protection rating. Insulation class I. Photobiological safety group 0. Environmental Product Declaration - EPD@available, according to UNE-EN ISO 9001:2015 and UNE-EN ISO 14001:2015.

Finish: Matte white RAL 9010

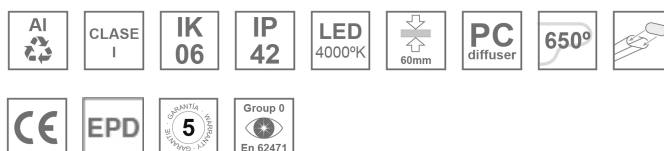
Dimensions: 1.743 x 89 x 70 mm

Weight: 4.271 g

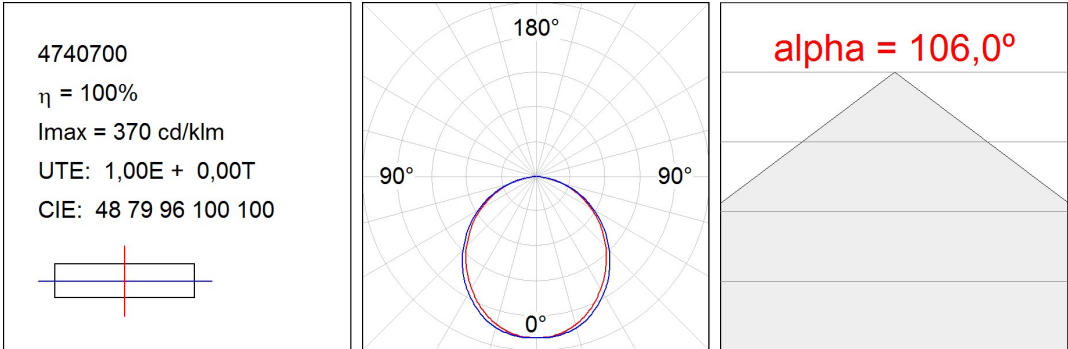
Installation: Recessed

Recessing measures: 1,755 x 78 x 85 mm
**TECHNICAL SPECIFICATIONS:**

Light output:	3.215 lm	°K :	4000
Plum:	26.8W	CRI :	80
Efficacy:	119,9 lm/w	MacAdam:	3
Type:	MID POWER LED	Power Supply:	220-240V 50/60Hz
LED Lifetime:	50.000 L80 B10 (Ta=25°C)	Gear:	Electronic
Power:	25W		

Light output tolerance +/- 10%
**CUSTOM MADE OPTIONS:**

PHOTOMETRIC DATA :



ACCESORIES :

Assembly



Product code:
ELWRST

Description:
ACC. ELECTROSTATICS WRIST STRAP



Product code:
F7COSUX/MMG
F7COSUX/MMW

Description:
FIL 70 ACC. COVER X/MM GR.
FIL 70 ACC. COVER X/MM WH.



Product code:
F7JO

Description:
ACC. INTM JOINT



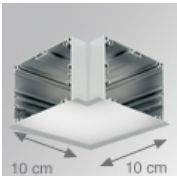
Product code:
F7PRREX/MMG
F7PRREX/MMW

Description:
FIL 70 ACC. REC PROFILE X/MM GR.
FIL 70 ACC. REC PROFILE X/MM WH.



Product code:
F7REECG
F7REECW

Description:
FIL 70 ACC. REC END COVER GR.
FIL 70 ACC. REC END COVER WH.

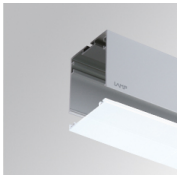


Product code:
F7REHCG
F7REHCW

Description:
FIL 70 ACC. REC 90° CORNER GR.
FIL 70 ACC. REC 90° CORNER WH.

ACCESORIES :

Optical



Product code:
F7DIX/MMOP

Description:
FIL 70 ACC. OPAL DIFFUSER X/MM

