

## F71RE170LOOP830DW



## FIL 70 OPAL REC 3900 WW DALI WH.

**Description:**

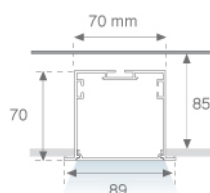
Recessed luminaire model FIL 70 OPAL REC 3900 WW DALI WH., LAMP brand. Made of matt white painted extruded aluminium with opal polycarbonate diffuser. Model for LED MID-POWER with warm white colour temperature and control DALI gear included. IP43, IK06 protection rating. Insulation class I. Photobiological safety group 0. Environmental Product Declaration - EPD available, according to UNE-EN ISO 9001:2015 and UNE-EN ISO 14001:2015.

**Finish:** Matte white RAL 9010

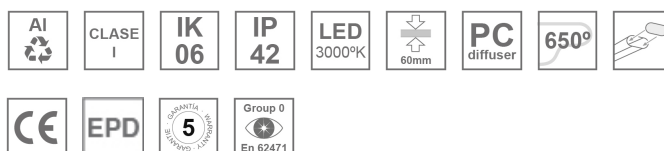
**Dimensions:** 1.743 x 89 x 70 mm

**Weight:** 4.271 g

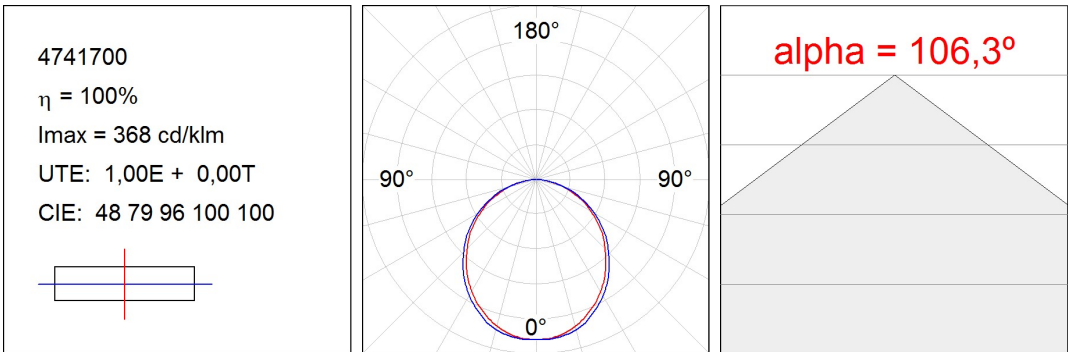
**Installation:** Recessed

**Recessing measures:** 1,755 x 78 x 85 mm
**TECHNICAL SPECIFICATIONS:**

<b>Light output:</b>	2.988 lm	<b>°K :</b>	3000
<b>Plum:</b>	29,7W	<b>CRI :</b>	80
<b>Efficacy:</b>	100,6 lm/w	<b>MacAdam:</b>	3
<b>Type:</b>	MID POWER LED	<b>Power Supply:</b>	220-240V 50/60Hz
<b>LED Lifetime:</b>	50.000 L80 B10 (Ta=25°C)	<b>Gear:</b>	Adjustable DALI
<b>Power:</b>	25W		

*Light output tolerance +/- 10%*
**CUSTOM MADE OPTIONS:**

PHOTOMETRIC DATA :



---

**ACCESORIES :**

**Assembly**



**Product code:**

ELWRST

**Description:**

ACC. ELECTROSTATICS WRIST STRAP

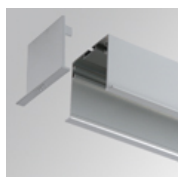


**Product code:**

F7JO

**Description:**

ACC. INTM JOINT

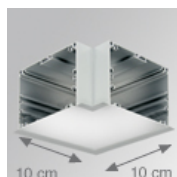


**Product code:**

F7REECW

**Description:**

FIL 70 ACC. REC END COVER WH.



**Product code:**

F7REHCW

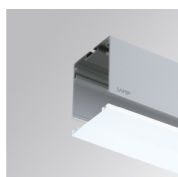
**Description:**

FIL 70 ACC. REC 90° CORNER WH.

---

**ACCESORIES :**

**Optical**



**Product code:**

F7DIX/MMOP

**Description:**

FIL 70 ACC. OPAL DIFFUSER X/MM

