

F71RE170LOOP830DG



FIL 70 OPAL REC 3900 WW DALI GR.

Description:

Recessed luminaire model FIL 70 OPAL REC 3900 WW DALI GR., LAMP brand. Made of satin grey painted extruded aluminium with opal polycarbonate diffuser. Model for LED MID-POWER with warm white colour temperature and control gear included. IP43, IK06 protection rating. Insulation class I. Photobiological safety group 0. Environmental Product Declaration - EPD® available, according to UNE-EN ISO 9001:2015 and UNE-EN ISO 14001:2015.

Finish: Gloss grey

Dimensions: 1.743 x 89 x 70 mm

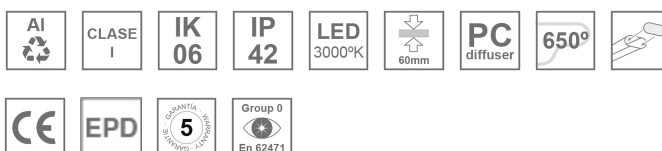
Weight: 4.271 g

Installation: Recessed

Recessing measures: 1,755 x 78 x 85 mm

TECHNICAL SPECIFICATIONS:

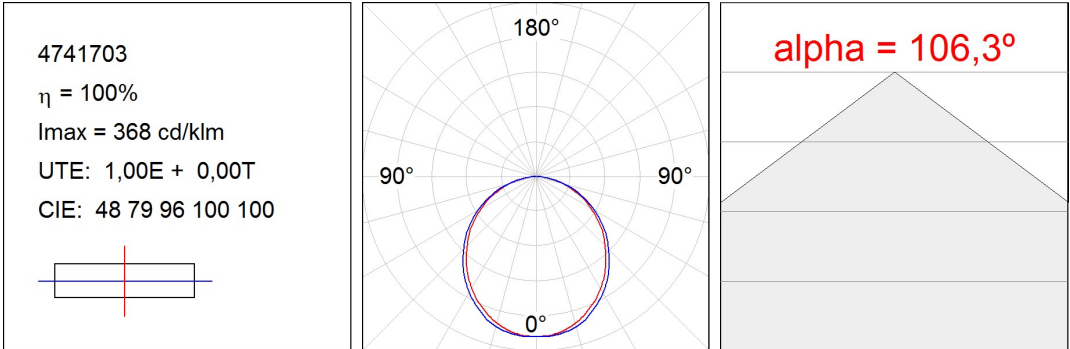
Light output:	2.988 lm	°K :	3000
Plum:	29,7W	CRI :	80
Efficacy:	100,6 lm/w	MacAdam:	3
Type:	MID POWER LED	Power Supply:	220-240V 50/60Hz
LED Lifetime:	50.000 L80 B10 (Ta=25°C)	Gear:	Adjustable DALI
Power:	25W		

Light output tolerance +/- 10%


CUSTOM MADE OPTIONS:



PHOTOMETRIC DATA :



ACCESORIES :

Assembly



Product code:

ELWRST

Description:

ACC. ELECTROSTATICS WRIST STRAP

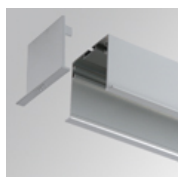


Product code:

F7JO

Description:

ACC. INTM JOINT

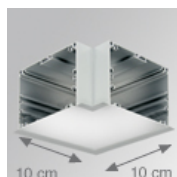


Product code:

F7REECG

Description:

FIL 70 ACC. REC END COVER GR.



Product code:

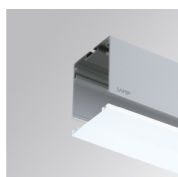
F7REHCG

Description:

FIL 70 ACC. REC 90° CORNER GR.

ACCESORIES :

Optical



Product code:

F7DIX/MMOP

Description:

FIL 70 ACC. OPAL DIFFUSER X/MM

