

## F71RE170HOOP840DW



## FIL 70 OPAL REC 6600 NW DALI WH.

**Description:**

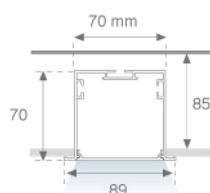
Recessed luminaire model FIL 70 OPAL REC 6600 NW DALI WH., LAMP brand. Made of matt white painted extruded aluminium with polycarbonate opal diffuser. Model for LED MID-POWER with neutral white colour temperature and control DALI gear included. IP43, IK06 protection rating. Insulation class I. Photobiological safety group 0. Environmental Product Declaration - EPD available, according to UNE-EN ISO 9001:2015 and UNE-EN ISO 14001:2015.

**Finish:** Matte white RAL 9010

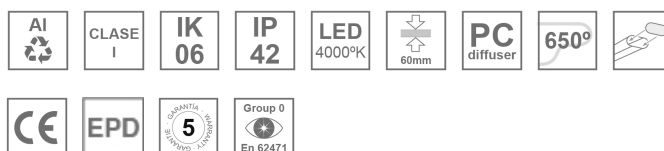
**Dimensions:** 1.743 x 89 x 70 mm

**Weight:** 4.276 g

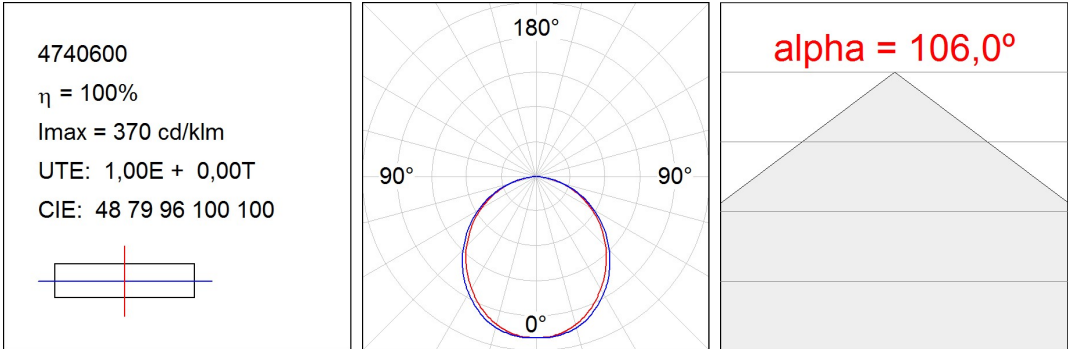
**Installation:** Recessed

**Recessing measures:** 1,755 x 78 x 85 mm
**TECHNICAL SPECIFICATIONS:**

<b>Light output:</b>	5.318 lm	<b>°K :</b>	4000
<b>Plum:</b>	45,8W	<b>CRI :</b>	80
<b>Efficacy:</b>	116,1 lm/w	<b>MacAdam:</b>	3
<b>Type:</b>	MID POWER LED	<b>Power Supply:</b>	220-240V 50/60Hz
<b>LED Lifetime:</b>	50.000 L80 B10 (Ta=25°C)	<b>Gear:</b>	Adjustable DALI
<b>Power:</b>	41W		

*Light output tolerance +/- 10%*
**CUSTOM MADE OPTIONS:**

PHOTOMETRIC DATA :



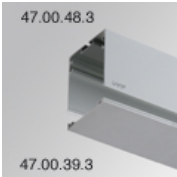
ACCESORIES :

Assembly



**Product code:**  
ELWRST

**Description:**  
ACC. ELECTROSTATICS WRIST STRAP



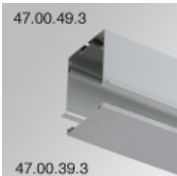
**Product code:**  
F7COSUX/MMG  
F7COSUX/MMW

**Description:**  
FIL 70 ACC. COVER X/MM GR.  
FIL 70 ACC. COVER X/MM WH.



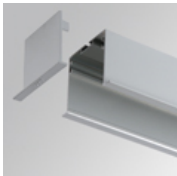
**Product code:**  
F7JO

**Description:**  
ACC. INTM JOINT



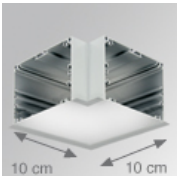
**Product code:**  
F7PRREX/MMG  
F7PRREX/MMW

**Description:**  
FIL 70 ACC. REC PROFILE X/MM GR.  
FIL 70 ACC. REC PROFILE X/MM WH.



**Product code:**  
F7REECG  
F7REECW

**Description:**  
FIL 70 ACC. REC END COVER GR.  
FIL 70 ACC. REC END COVER WH.

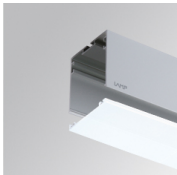


**Product code:**  
F7REHCG  
F7REHCW

**Description:**  
FIL 70 ACC. REC 90° CORNER GR.  
FIL 70 ACC. REC 90° CORNER WH.

ACCESORIES :

Optical



**Product code:**  
F7DIX/MMOP

**Description:**  
FIL 70 ACC. OPAL DIFFUSER X/MM

