

F71RE120LOPR840NG



FIL 70 PRISM REC 2600 NW GR.

Description:

Recessed luminaire model FIL 70 PRISM REC 2600 NW GR., LAMP brand. Made of satin grey painted extruded aluminium with prismatic polycarbonate diffuser. Model for MID-POWER LED, with neutral white colour temperature and control gear included. Glare rating <19 (for 4h, 8h 70/50/20). IP43, IK06 protection rating. Insulation class I. Photobiological safety group 0. Environmental Product Declaration - EPD® available, according to UNE-EN ISO 9001:2015 and UNE-EN ISO 14001:2015.

Finish: Gloss grey

Dimensions: 1.162 x 70 x 70 mm

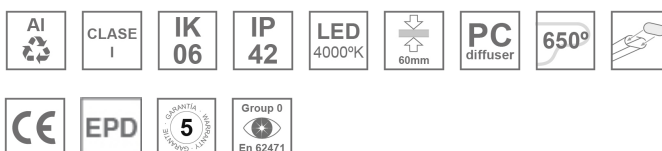
Weight: 2.767 g

Installation: Recessed

Recessing measures: 1,174 x 78 x 85 mm

TECHNICAL SPECIFICATIONS:

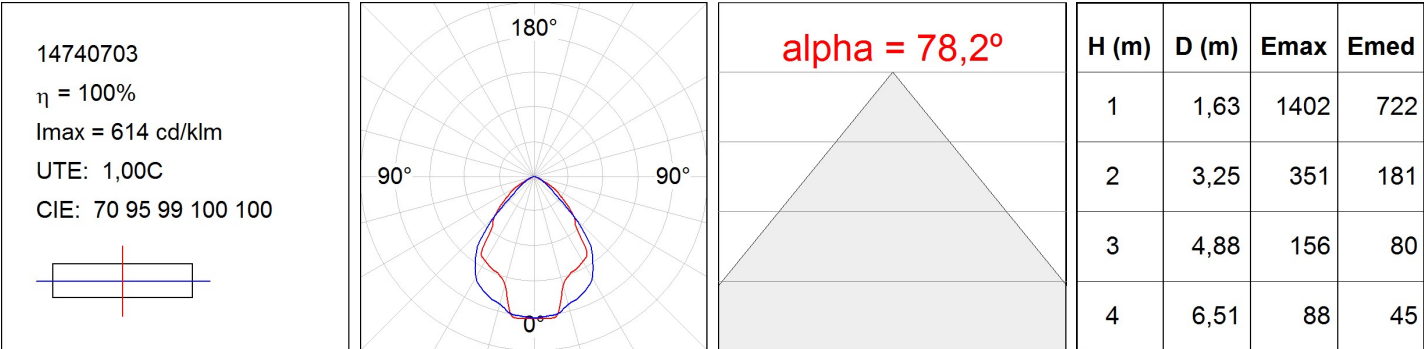
Light output:	2.300 lm	°K :	4000
Plum:	19,4W	CRI :	80
Efficacy:	118,6 lm/w	MacAdam:	3
UGR:	<19	Power Supply:	220-240V 50/60Hz
Type:	MID POWER LED	Gear:	Electronic
LED Lifetime:	50.000 L80 B10 (Ta=25°C)		
Power:	17W		

Light output tolerance +/- 10%


CUSTOM MADE OPTIONS:



PHOTOMETRIC DATA :



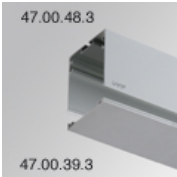
ACCESSORIES :

Assembly



Product code:
ELWRST

Description:
ACC. ELECTROSTATICS WRIST STRAP



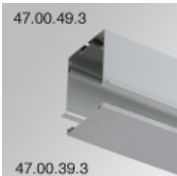
Product code:
F7COSUX/MMG
F7COSUX/MMW

Description:
FIL 70 ACC. COVER X/MM GR.
FIL 70 ACC. COVER X/MM WH.



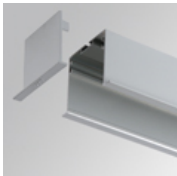
Product code:
F7JO

Description:
ACC. INTM JOINT



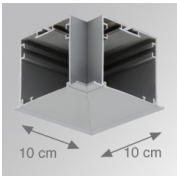
Product code:
F7PRREX/MMG
F7PRREX/MMW

Description:
FIL 70 ACC. REC PROFILE X/MM GR.
FIL 70 ACC. REC PROFILE X/MM WH.



Product code:
F7REECG
F7REECW

Description:
FIL 70 ACC. REC END COVER GR.
FIL 70 ACC. REC END COVER WH.



Product code:
F7TEREHCG
F7TEREHCW

Description:
FIL 70 TECH ACC. REC 90° CORNER GR.
FIL 70 TECH ACC. REC 90° CORNER WH.

