

F71RE120LOOP830DW



FIL 70 OPAL REC 2600 WW DALI WH.

Description:

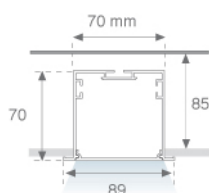
Recessed luminaire model FIL 70 OPAL REC 2600 WW DALI WH., LAMP brand. Made of matt white painted extruded aluminium with opal polycarbonate diffuser. Model for LED MID-POWER with warm white colour temperature and control DALI gear included. IP43, IK06 protection rating. Insulation class I. Photobiological safety group 0. Environmental Product Declaration - EPD available, according to UNE-EN ISO 9001:2015 and UNE-EN ISO 14001:2015.

Finish: Matte white RAL 9010

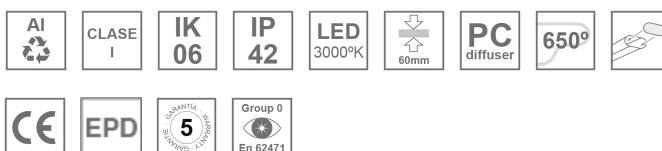
Dimensions: 1.162 x 89 x 70 mm

Weight: 2.662 g

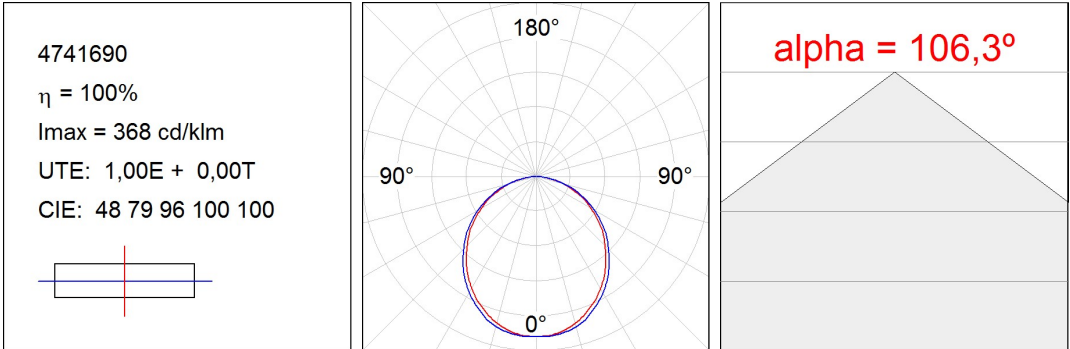
Installation: Recessed

Recessing measures: 1,174 x 78 x 85 mm
**TECHNICAL SPECIFICATIONS:**

Light output:	1.992 lm	°K :	3000
Plum:	19,2W	CRI :	80
Efficacy:	103,8 lm/w	MacAdam:	3
Type:	MID POWER LED	Power Supply:	220-240V 50/60Hz
LED Lifetime:	60.000 L80 B10 (Ta=25°C)	Gear:	Adjustable DALI
Power:	17W		

Light output tolerance +/- 10%
**CUSTOM MADE OPTIONS:**

PHOTOMETRIC DATA :



ACCESORIES :

Assembly



Product code:

ELWRST

Description:

ACC. ELECTROSTATICS WRIST STRAP

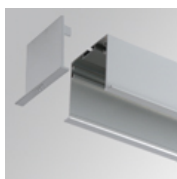


Product code:

F7JO

Description:

ACC. INTM JOINT

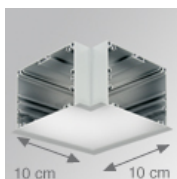


Product code:

F7REECW

Description:

FIL 70 ACC. REC END COVER WH.



Product code:

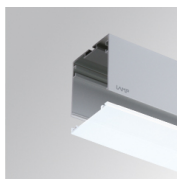
F7REHCW

Description:

FIL 70 ACC. REC 90° CORNER WH.

ACCESORIES :

Optical



Product code:

F7DIX/MMOP

Description:

FIL 70 ACC. OPAL DIFFUSER X/MM

