

F71RE120HOOP830NW



FIL 70 OPAL REC 4400 WW WH.

Description:

Recessed luminaire model FIL 70 OPAL REC 4400 WW WH., LAMP brand. Made of matt white painted extruded aluminium with opal polycarbonate diffuser. Model for LED MID-POWER with warm white colour temperature and control gear included. IP43, IK06 protection rating. Insulation class I. Photobiological safety group 0. Environmental Product Declaration - EPD@available, according to UNE-EN ISO 9001:2015 and UNE-EN ISO 14001:2015.

Finish: Matte white RAL 9010

Dimensions: 1.162 x 89 x 70 mm

Weight: 2.667 g

Installation: Recessed

Recessing measures: 1,174 x 78 x 85 mm

TECHNICAL SPECIFICATIONS:

Light output: 3.370 lm

°K : 3000

Plum: 30,7W

CRI : 80

Efficacy: 109,8 lm/w

MacAdam: 3

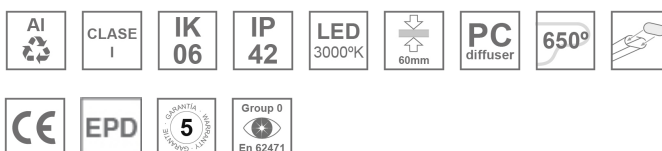
Type: MID POWER LED

Power Supply: 220-240V 50/60Hz

LED Lifetime: 60.000 L80 B10 (Ta=25°C)

Gear: Electronic

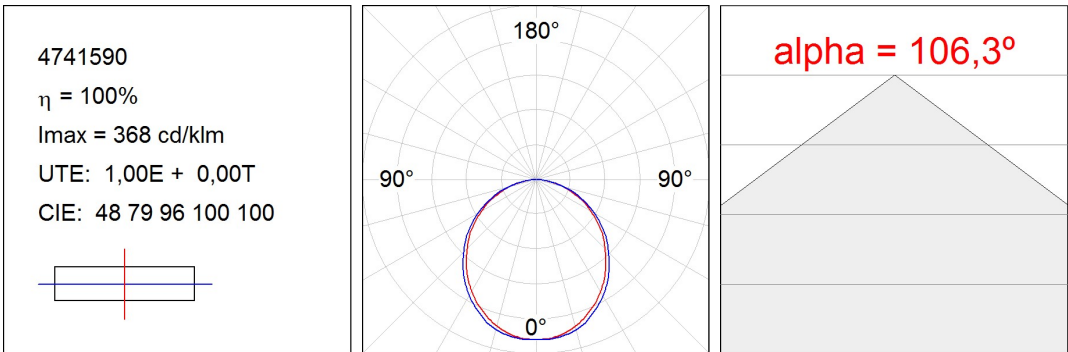
Power: 28W

Light output tolerance +/- 10%


CUSTOM MADE OPTIONS:



PHOTOMETRIC DATA :



ACCESORIES :

Assembly



Product code:
ELWRST

Description:
ACC. ELECTROSTATICS WRIST STRAP



Product code:
F7COSUX/MMG
F7COSUX/MMW

Description:
FIL 70 ACC. COVER X/MM GR.
FIL 70 ACC. COVER X/MM WH.



Product code:
F7JO

Description:
ACC. INTM JOINT



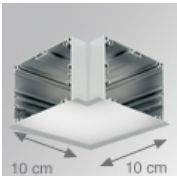
Product code:
F7PRREX/MMG
F7PRREX/MMW

Description:
FIL 70 ACC. REC PROFILE X/MM GR.
FIL 70 ACC. REC PROFILE X/MM WH.



Product code:
F7REECG
F7REECW

Description:
FIL 70 ACC. REC END COVER GR.
FIL 70 ACC. REC END COVER WH.

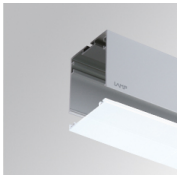


Product code:
F7REHCG
F7REHCW

Description:
FIL 70 ACC. REC 90° CORNER GR.
FIL 70 ACC. REC 90° CORNER WH.

ACCESORIES :

Optical



Product code:
F7DIX/MMOP

Description:
FIL 70 ACC. OPAL DIFFUSER X/MM

