

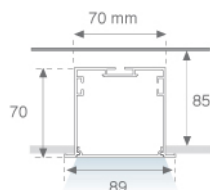
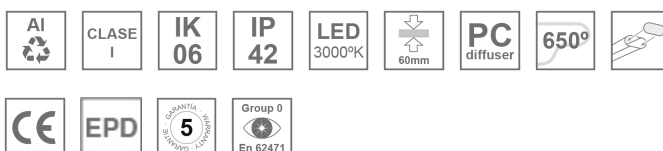
## F71RE120HOOP830DG



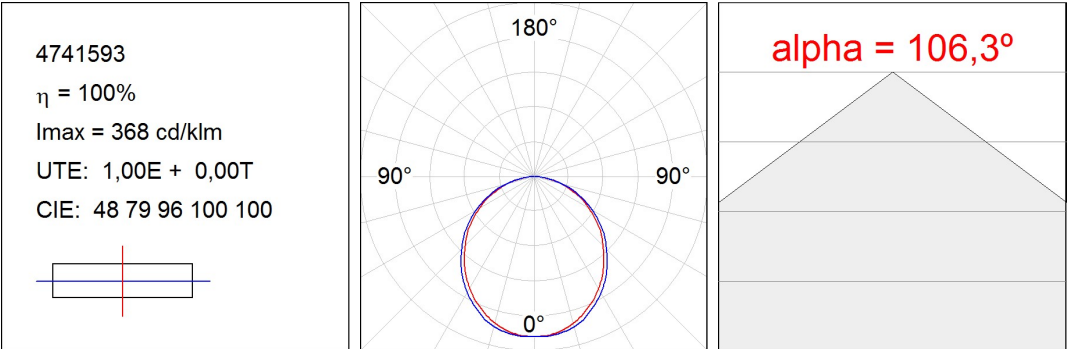
## FIL 70 OPAL REC 4400 WW DALI GR.

**Description:**

Recessed luminaire model FIL 70 OPAL REC 4400 WW DALI GR., LAMP brand. Made of satin grey painted extruded aluminium with opal polycarbonate diffuser. Model for LED MID-POWER with warm white colour temperature and control gear included. IP43, IK06 protection rating. Insulation class I. Photobiological safety group 0. Environmental Product Declaration - EPD® available, according to UNE-EN ISO 9001:2015 and UNE-EN ISO 14001:2015.

**Finish:** Gloss grey**Dimensions:** 1.162 x 89 x 70 mm**Weight:** 2.667 g**Installation:** Recessed**Recessing measures:** 1,174 x 78 x 85 mm**TECHNICAL SPECIFICATIONS:****Light output:** 3.370 lm**°K :** 3000**Plum:** 30,7W**CRI :** 80**Efficacy:** 109,8 lm/w**MacAdam:** 3**Type:** MID POWER LED**Power Supply:** 220-240V 50/60Hz**LED Lifetime:** 60.000 L80 B10 (Ta=25°C)**Gear:** Adjustable DALI**Power:** 28W**Light output tolerance +/- 10%****CUSTOM MADE OPTIONS:**

PHOTOMETRIC DATA :



ACCESORIES :

Assembly



**Product code:**  
ELWRST

**Description:**  
ACC. ELECTROSTATICS WRIST STRAP



**Product code:**  
F7COSUX/MMG  
F7COSUX/MMW

**Description:**  
FIL 70 ACC. COVER X/MM GR.  
FIL 70 ACC. COVER X/MM WH.



**Product code:**  
F7JO

**Description:**  
ACC. INTM JOINT



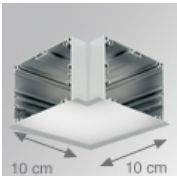
**Product code:**  
F7PRREX/MMG  
F7PRREX/MMW

**Description:**  
FIL 70 ACC. REC PROFILE X/MM GR.  
FIL 70 ACC. REC PROFILE X/MM WH.



**Product code:**  
F7REECG  
F7REECW

**Description:**  
FIL 70 ACC. REC END COVER GR.  
FIL 70 ACC. REC END COVER WH.

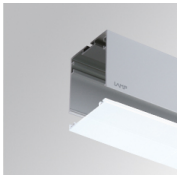


**Product code:**  
F7REHCG  
F7REHCW

**Description:**  
FIL 70 ACC. REC 90° CORNER GR.  
FIL 70 ACC. REC 90° CORNER WH.

ACCESORIES :

Optical



**Product code:**  
F7DIX/MMOP

**Description:**  
FIL 70 ACC. OPAL DIFFUSER X/MM

