

## F71RE100MOTA840NW



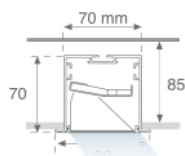
## FIL 70 TECH ASYM REC 1M 3200 NW WH.

**Description:**

Recessed surface luminaire FIL 70 TECH ASYM REC 1M 3200 NW WH., LAMP brand. Made of matt white painted extruded aluminium with REDIL® OPTICS. Model for LED MID-POWER with neutral white colour temperature and electronic control gear included. IP43 protection rating. Insulation class I. Environmental Product Declaration - EPD@available, according to UNE-EN ISO 9001:2015 and UNE-EN ISO 14001:2015.

**Finish:** Matte white RAL 9010

**Dimensions:** 1.000 x 70 x 70 mm

**Weight:** 2.516 g

**Installation:** Recessed

**Recessing measures:** 1,012 x 78 x 85 mm
**TECHNICAL SPECIFICATIONS:**
**Light output:** 2.032 lm

**°K :** 4000

**Plum:** 23,6W

**CRI :** 80

**Efficacy:** 86,1 lm/w

**MacAdam:** 3

**UGR:** <19

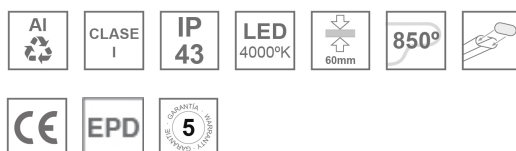
**Power Supply:** 220-240V 50/60Hz

**Type:** MID POWER LED

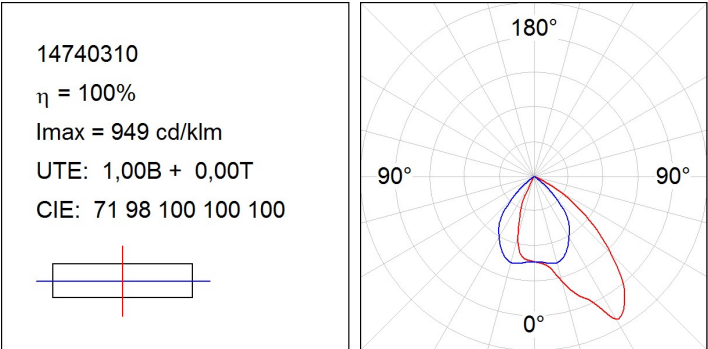
**Gear:** Electronic

**LED Lifetime:** 50.000 L80 B10 (Ta=25°C)

**Power:** 21W

**Light output tolerance +/- 10%**
**CUSTOM MADE OPTIONS:**

PHOTOMETRIC DATA :

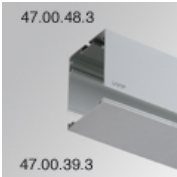


**ACCESORIES :**  
**Assembly**



**Product code:**  
ELWRST

**Description:**  
ACC. ELECTROSTATICS WRIST STRAP



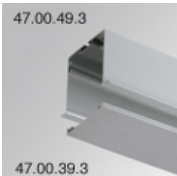
**Product code:**  
F7COSUX/MMG  
F7COSUX/MMW

**Description:**  
FIL 70 ACC. COVER X/MM GR.  
FIL 70 ACC. COVER X/MM WH.



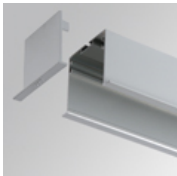
**Product code:**  
F7JO

**Description:**  
ACC. INTM JOINT



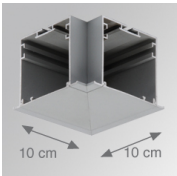
**Product code:**  
F7PRREX/MMG  
F7PRREX/MMW

**Description:**  
FIL 70 ACC. REC PROFILE X/MM GR.  
FIL 70 ACC. REC PROFILE X/MM WH.



**Product code:**  
F7REECG  
F7REECW

**Description:**  
FIL 70 ACC. REC END COVER GR.  
FIL 70 ACC. REC END COVER WH.



**Product code:**  
F7TEREHCG  
F7TEREHCW

**Description:**  
FIL 70 TECH ACC. REC 90° CORNER GR.  
FIL 70 TECH ACC. REC 90° CORNER WH.