

F71RE100LOTS840NG



FIL 70 TECH REC 1M 1600 NW GR.

Description:

Recessed luminaire model FIL 70 TECH REC 1M 1600 NW GR., LAMP brand. Made of satin grey painted extruded aluminium. Model for MID-POWER LED with neutral white colour temperature and control gear included, Glare rating <19 (for 4h, 8h 70/50/20). which consists of a two-phase reflection. Insulation class I. Photobiological safety group 0. Environmental Product Declaration - EPD@available, according to UNE-EN ISO 9001:2015 and UNE-EN ISO 14001:2015.

Finish: Gloss grey

Dimensions: 1.000 x 70 x 70 mm

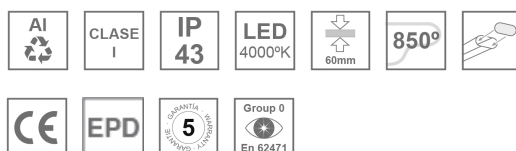
Weight: 2.124 g

Installation: Recessed

Recessing measures: 1,012 x 78 x 85 mm

TECHNICAL SPECIFICATIONS:

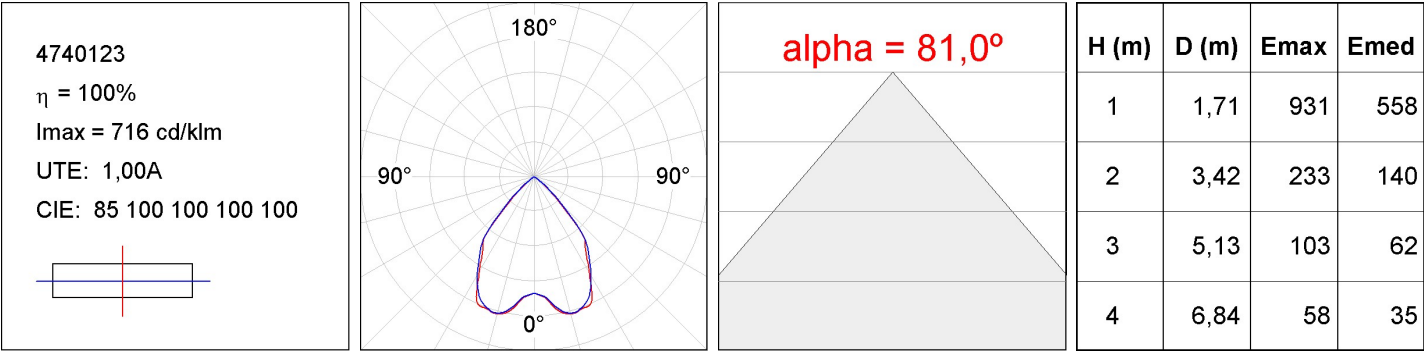
Light output:	1.530 lm	°K :	4000
Plum:	14,5W	CRI :	80
Efficacy:	105,5 lm/w	MacAdam:	3
UGR:	<19	Power Supply:	220-240V 50/60Hz
Type:	MID POWER LED	Gear:	Electronic
LED Lifetime:	50.000 L80 B10 (Ta=25°C)		
Power:	12W		

Light output tolerance +/- 10%


CUSTOM MADE OPTIONS:



PHOTOMETRIC DATA :



ACCESORIES :

Assembly



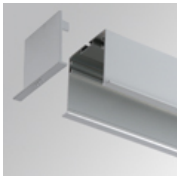
Product code:
ELWRST

Description:
ACC. ELECTROSTATICS WRIST STRAP



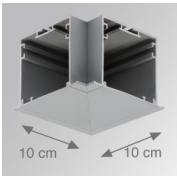
Product code:
F7JO

Description:
ACC. INTM JOINT



Product code:
F7REECG
F7REECW

Description:
FIL 70 ACC. REC END COVER GR.
FIL 70 ACC. REC END COVER WH.



Product code:
F7TEREHCG
F7TEREHCW

Description:
FIL 70 TECH ACC. REC 90° CORNER GR.
FIL 70 TECH ACC. REC 90° CORNER WH.

ACCESORIES :

Optical



Product code:
DIOPST1000

Description:
ACC. DIF. SOFT TECH OPAL