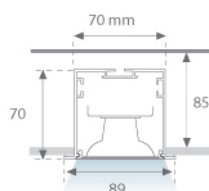


F71RE100LOTS840DW



FIL 70 TECH REC 1M 1600 NW DALI WH.

Description:

Recessed luminaire model FIL 70 TECH REC 1M 1600 NW DALI WH., LAMP brand. Made of matt white painted extruded aluminium. Model for MID-POWER LED with neutral white colour temperature and control DALI gear included, which consists of a two-phase reflection. Glare rating <19 (for 4h, 8h 70/50/20). Insulation class I. Photobiological safety group 0. Environmental Product Declaration - EPD®available, according to UNE-EN ISO 9001:2015 and UNE-EN ISO 14001:2015.

Finish: Matte white RAL 9010

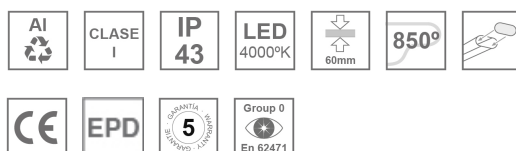
Dimensions: 1.000 x 70 x 70 mm

Weight: 2.124 g

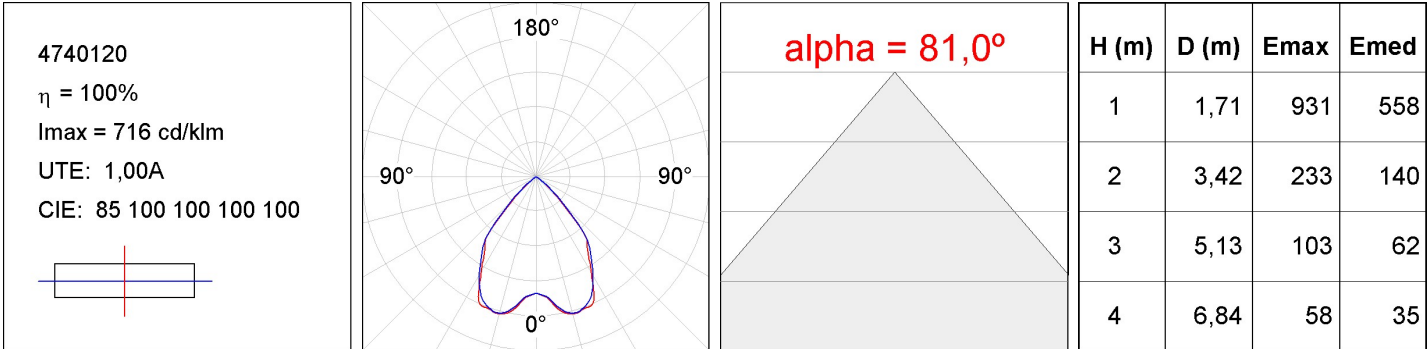
Installation: Recessed

Recessing measures: 1,012 x 78 x 85 mm
TECHNICAL SPECIFICATIONS:

Light output:	1.530 lm	°K :	4000
Plum:	14,5W	CRI :	80
Efficacy:	105,5 lm/w	MacAdam:	3
UGR:	<19	Power Supply:	220-240V 50/60Hz
Type:	MID POWER LED	Gear:	Adjustable DALI
LED Lifetime:	50.000 L80 B10 (Ta=25°C)		
Power:	12W		

Light output tolerance +/- 10%
**CUSTOM MADE OPTIONS:**

PHOTOMETRIC DATA :



ACCESORIES :

Assembly



Product code:

ELWRST

Description:

ACC. ELECTROSTATICS WRIST STRAP

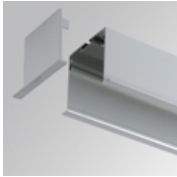


Product code:

F7JO

Description:

ACC. INTM JOINT



Product code:

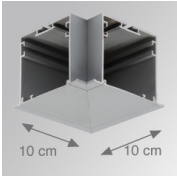
F7REECG

F7REECW

Description:

FIL 70 ACC. REC END COVER GR.

FIL 70 ACC. REC END COVER WH.



Product code:

F7TEREHCG

F7TEREHCW

Description:

FIL 70 TECH ACC. REC 90° CORNER GR.

FIL 70 TECH ACC. REC 90° CORNER WH.

ACCESORIES :

Optical



Product code:

DIOPST1000

Description:

ACC. DIF. SOFT TECH OPAL