

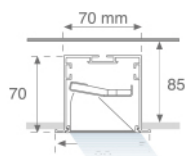
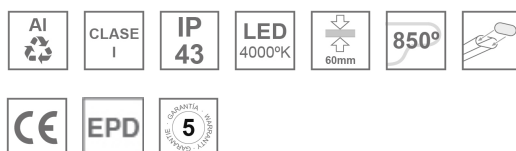
## F71RE100LOTA840DG



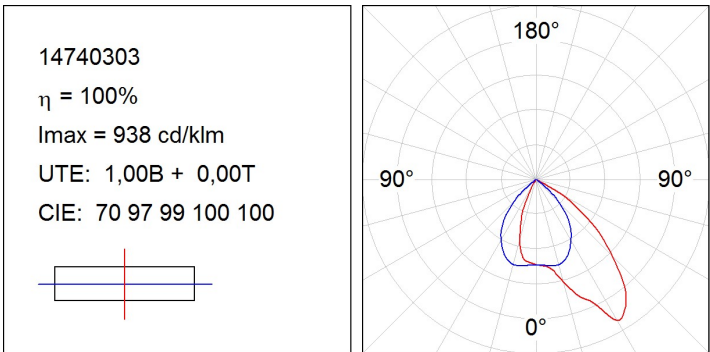
## FIL 70 TECH ASYM REC 1M 1600 NW DA GR

**Description:**

Recessed luminaire FIL 70 TECH ASYM REC 1M 1600 NW DA GR., LAMP brand. Made of satin grey painted extruded aluminium with REDIL® OPTICS. Model for LED MID-POWER with neutral white colour temperature and DALI electronic control gear included. Insulation class I. Environmental Product Declaration - EPD@available, according to UNE-EN ISO 9001:2015 and UNE-EN ISO 14001:2015.

**Finish:** Gloss grey**Dimensions:** 1.000 x 70 x 70 mm**Weight:** 2.516 g**Installation:** Recessed**Recessing measures:** 1,012 x 78 x 85 mm**TECHNICAL SPECIFICATIONS:****Light output:** 1.388 lm**°K :** 4000**Plum:** 14,5W**CRI :** 80**Efficacy:** 95,7 lm/w**MacAdam:** 3**UGR:** <19**Power Supply:** 220-240V 50/60Hz**Type:** MID POWER LED**Gear:** Adjustable DALI**LED Lifetime:** 50.000 L80 B10 (Ta=25°C)**Power:** 12W**Light output tolerance +/- 10%****CUSTOM MADE OPTIONS:**

PHOTOMETRIC DATA :

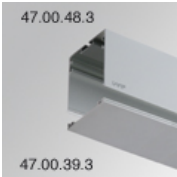


**ACCESORIES :**  
**Assembly**



**Product code:**  
ELWRST

**Description:**  
ACC. ELECTROSTATICS WRIST STRAP



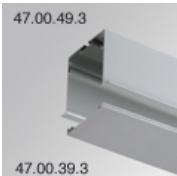
**Product code:**  
F7COSUX/MMG  
F7COSUX/MMW

**Description:**  
FIL 70 ACC. COVER X/MM GR.  
FIL 70 ACC. COVER X/MM WH.



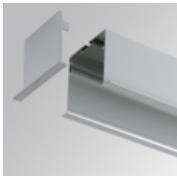
**Product code:**  
F7JO

**Description:**  
ACC. INTM JOINT



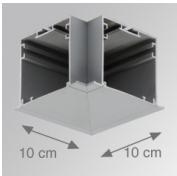
**Product code:**  
F7PRREX/MMG  
F7PRREX/MMW

**Description:**  
FIL 70 ACC. REC PROFILE X/MM GR.  
FIL 70 ACC. REC PROFILE X/MM WH.



**Product code:**  
F7REECG  
F7REECW

**Description:**  
FIL 70 ACC. REC END COVER GR.  
FIL 70 ACC. REC END COVER WH.



**Product code:**  
F7TEREHCG  
F7TEREHCW

**Description:**  
FIL 70 TECH ACC. REC 90° CORNER GR.  
FIL 70 TECH ACC. REC 90° CORNER WH.