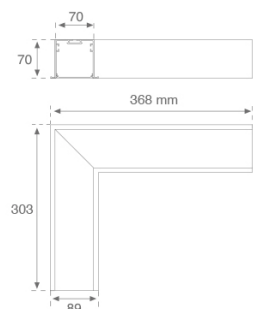
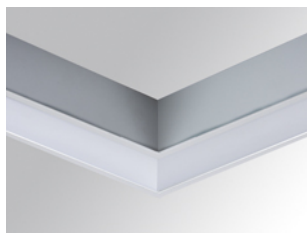


F71HCRELOOP830NW



FIL 70 CORNER OPAL REC 1300 WW WH.

Description:

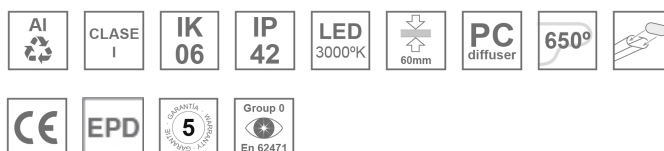
Recessed luminaire 90° corner model FIL 70 CORNER OPAL REC 1300 WW WH., LAMP brand. Made of matt white painted extruded aluminium with opal polycarbonate diffuser. Model for LED MID-POWER with warm white colour temperature and control gear included. IP 42, IK06 protection rating. Insulation class I. Photobiological safety group 0. Environmental Product Declaration - EPD@available, according to UNE-EN ISO 9001:2015 and UNE-EN ISO 14001:2015.

Finish: Matte white RAL 9010

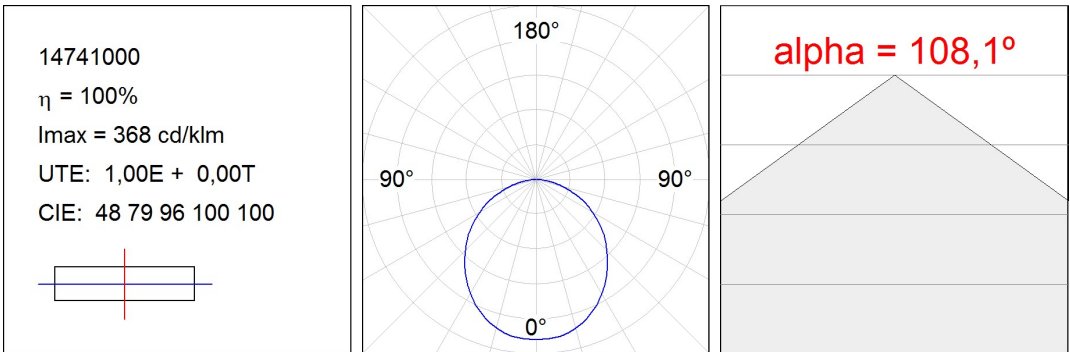
Weight: 1.500 g

Installation: Recessed
TECHNICAL SPECIFICATIONS:

Light output:	996 lm	°K :	3000
Plum:	10,1W	CRI :	80
Efficacy:	98,6 lm/w	MacAdam:	3
Type:	MID POWER LED	Power Supply:	220-240V 50/60Hz
LED Lifetime:	50.000 L80 B10 (Ta=25°C)	Gear:	Electronic
Power:	9W		

Light output tolerance +/- 10%
**CUSTOM MADE OPTIONS:**

PHOTOMETRIC DATA :



ACCESORIES :

Assembly



Product code:

ELWRST

Description:

ACC. ELECTROSTATICS WRIST STRAP

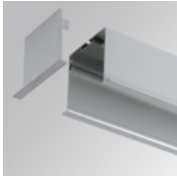


Product code:

F7JO

Description:

ACC. INTM JOINT



Product code:

F7REECG

F7REECW

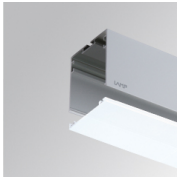
Description:

FIL 70 ACC. REC END COVER GR.

FIL 70 ACC. REC END COVER WH.

ACCESORIES :

Optical



Product code:

F7DIX/MMOP

Description:

FIL 70 ACC. OPAL DIFFUSER X/MM