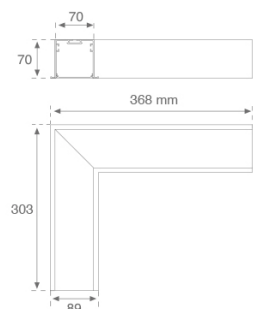
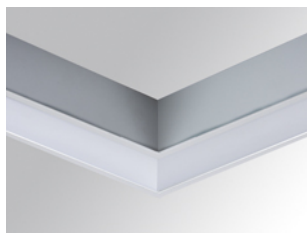


## F71HCRELOOP830NG



## FIL 70 CORNER OPAL REC 1300 WW GR.

## Description:

Recessed luminaire 90° corner model FIL 70 CORNER OPAL REC 1300 WW GR., LAMP brand. Made of satin grey painted extruded aluminium with opal polycarbonate diffuser. Model for LED MID-POWER with warm white colour temperature and control gear included. IP 42, IK06 protection rating. Insulation class I. Photobiological safety group 0. Environmental Product Declaration - EPD@available, according to UNE-EN ISO 9001:2015 and UNE-EN ISO 14001:2015.

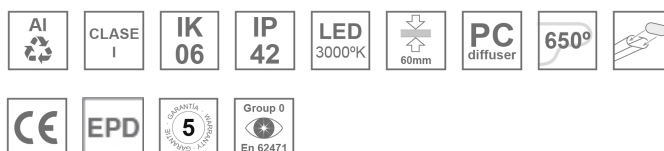
**Finish:** Gloss grey

**Weight:** 1.500 g

**Installation:** Recessed

## TECHNICAL SPECIFICATIONS:

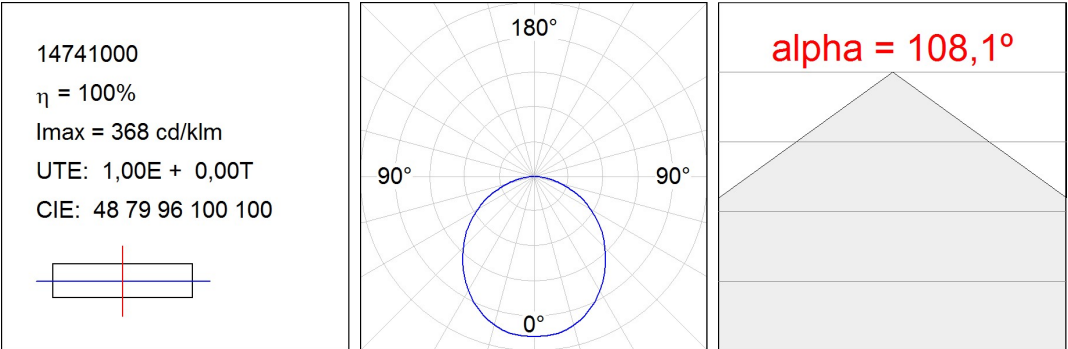
<b>Light output:</b>	996 lm	<b>°K :</b>	3000
<b>Plum:</b>	10,1W	<b>CRI :</b>	80
<b>Efficacy:</b>	98,6 lm/w	<b>MacAdam:</b>	3
<b>Type:</b>	MID POWER LED	<b>Power Supply:</b>	220-240V 50/60Hz
<b>LED Lifetime:</b>	50.000 L80 B10 (Ta=25°C)	<b>Gear:</b>	Electronic
<b>Power:</b>	9W		

*Light output tolerance +/- 10%*


## CUSTOM MADE OPTIONS:



PHOTOMETRIC DATA :



ACCESORIES :

Assembly



Product code:  
ELWRST

Description:  
ACC. ELECTROSTATICS WRIST STRAP



Product code:  
F7JO

Description:  
ACC. INTM JOINT



Product code:  
F7REECG  
F7REECW

Description:  
FIL 70 ACC. REC END COVER GR.  
FIL 70 ACC. REC END COVER WH.

ACCESORIES :

Optical



Product code:  
F7DIX/MMOP

Description:  
FIL 70 ACC. OPAL DIFFUSER X/MM