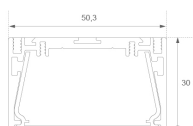
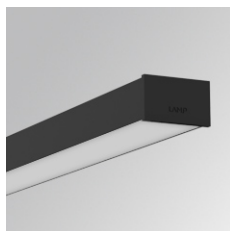


F51SL112MOOC830DB



FIL50 SLIM 1140 2600 WW COMF DALI BK

Description:

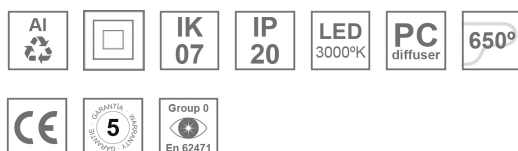
LAMP suspended or surface mounted structure FIL 50 SLIM 1120 2600. Manufactured from extruded aluminum with an 80% recycling rate, with an OPAL CONFORT diffuser made of a translucent polycarbonate diffuser and an optical film to achieve a controlled light distribution and low glare level, less than UGR 19. Model for LED MID-POWER, colour temperature 3000K and CRI80. Electronic DALI gear included. IP20 and IK07 ratings. Insulation Class II. Photobiological safety group 0. LED life time: 50.000 L90 B10 Available finishes: White and black.

Finish: Matte black RAL 9011

Dimensions: 1.140 x 50 x 30 mm

Installation: Surface
TECHNICAL SPECIFICATIONS:

| | | | |
|----------------------|--------------------------|----------------------|------------------|
| Light output: | 1.922 lm | °K : | 3000 |
| Plum: | 20,9W | CRI : | 80 |
| Efficacy: | 92 lm/w | MacAdam: | 3 |
| UGR: | <19 | Power Supply: | 220-240V 50/60Hz |
| Type: | MID POWER | Gear: | Adjustable DALI |
| LED Lifetime: | 50.000 L90 B10 (Ta=25°C) | | |
| Power: | 18W | | |

Light output tolerance +/- 10%
**CUSTOM MADE OPTIONS:**

PHOTOMETRIC DATA :

