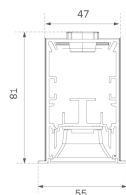


TECHNICAL DATA ON REVIEW

F42RE112MOTÉ940NG



FIL45 G2 REC 1120 2240 9NW TECH GR

Description:

LAMP suspended or surface mounted structure FIL45 G2 REC 1120. Manufactured from extruded aluminum with an 80% recycling rate, optic and black mat polycarbonate reflector TECH ULTRACONFORT to control light distribution and reduce glare UGR <15. Model for LED MID-POWER, colour temperature 4000K and IRC90. Electronic ON OFF gear included. IP20, IK07 ratings. Insulation Class I. Photobiological safety group 0. LED life time: 90.000 L80 B10. Available finishes: White, black and grey. Environmental Product Declaration - EPD@available, according to UNE-EN ISO 9001:2015 and UNE-EN ISO 14001:2015.

Finish: Gloss grey

Dimensions: 1.118 x 55 x 76 mm

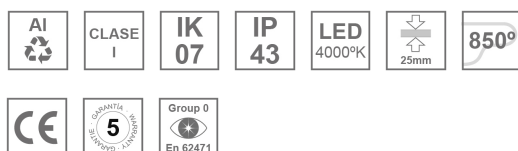
Weight: 2.750 g

Installation: Recessed

Recessing measures: 1,126 x 51 x 0 mm

TECHNICAL SPECIFICATIONS:

| | | | |
|----------------------|--------------------------|----------------------|------------------|
| Light output: | 1.828 lm | °K : | 4000 |
| Plum: | 15,5W | CRI : | 90 |
| Efficacy: | 118 lm/w | R9 : | 67 |
| UGR: | <15 | MacAdam: | 3 |
| Type: | MID POWER | Power Supply: | 220-240V 50/60Hz |
| LED Lifetime: | 90.000 L80 B10 (Ta=25°C) | Gear: | Electronic |
| Power: | 13W | | |

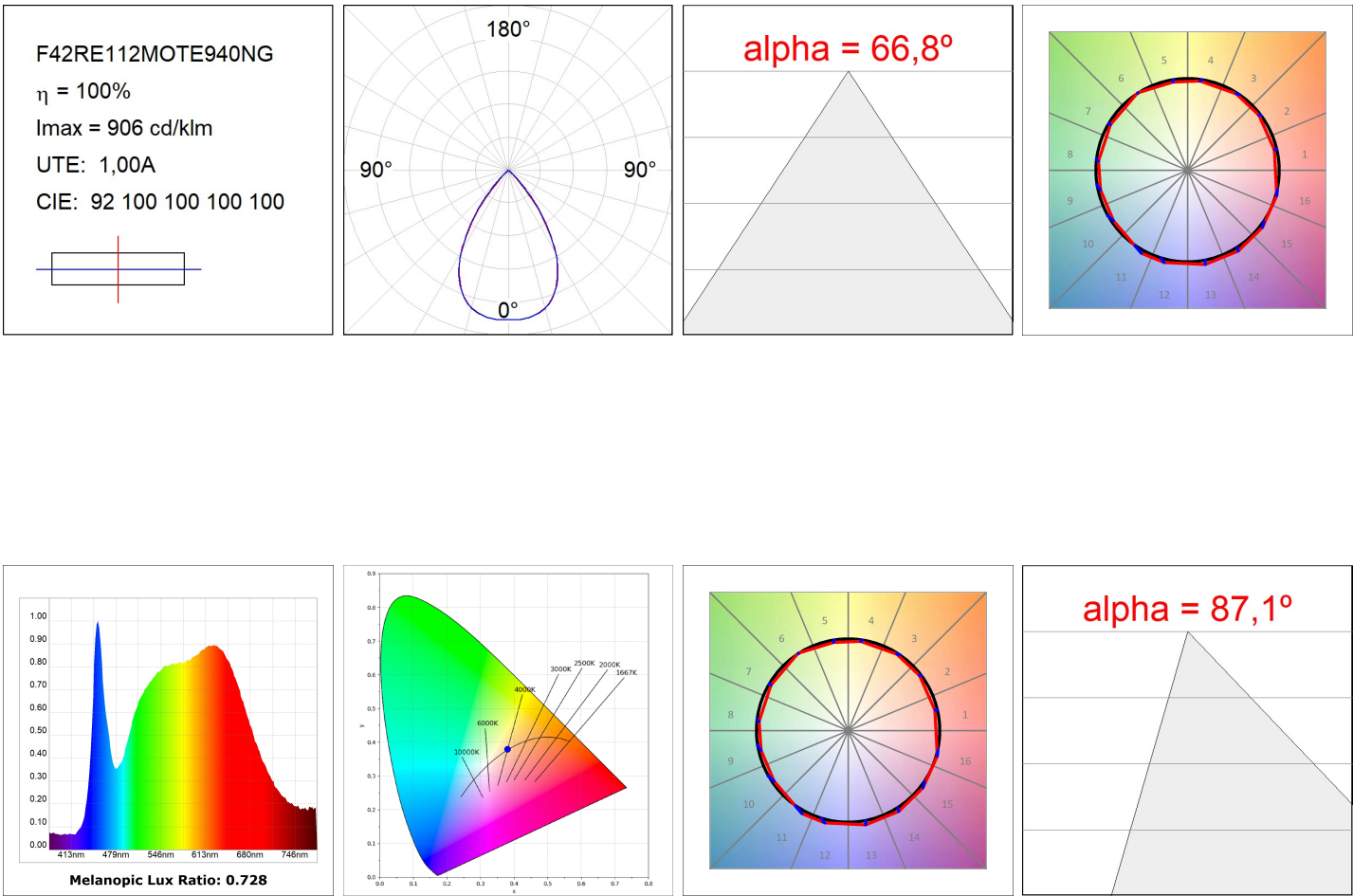
Light output tolerance +/- 10%

CUSTOM MADE OPTIONS:


TECHNICAL DATA ON REVIEW

F42RE112MOTE940NG

FIL45 G2 REC 1120 2240 9NW TECH GR

PHOTOMETRIC DATA :



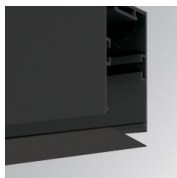
TECHNICAL DATA ON REVIEW
ACCESORIES :
Assembly

Product code:

F42JO

Description:

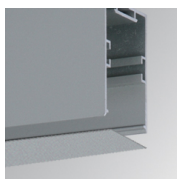
FIL45 ACC. SU/RE INTM JOINT B


Product code:

F4COX/MMB

Description:

FIL 45 ACC. COVER X/MM BK.


Product code:

F4COX/MMG

Description:

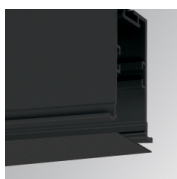
FIL 45 ACC. COVER X/MM GR.


Product code:

F4COX/MMW

Description:

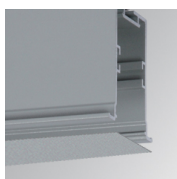
FIL 45 ACC. COVER X/MM WH.


Product code:

F4PRREX/MMB

Description:

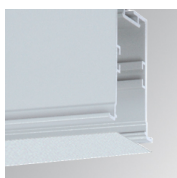
FIL 45 ACC. REC PROFIL X/MM BK.


Product code:

F4PRREX/MMG

Description:

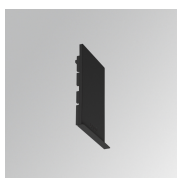
FIL 45 ACC. REC PROFIL X/MM GR.


Product code:

F4PRREX/MMW

Description:

FIL 45 ACC. REC PROFIL X/MM WH.


Product code:

F4REECB

Description:

FIL45 ACC. REC END COVER BK.


Product code:

F4REECG

Description:

FIL45 ACC. REC END COVER GR.

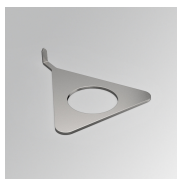

Product code:

F4REECW

Description:

FIL45 ACC. REC END COVER WH.

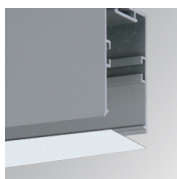
TECHNICAL DATA ON REVIEW

**Product code:**

F4TORFG

Description:

FIL45 ACC. TOOL REMOVE REFLECTOR

ACCESORIES :
Optical**Product code:**

F4DIX/MMOP

Description:

FIL 45 ACC. OPAL DIFFUSER X/MM

ACCESORIES :
Adjustment and control**Product code:**

F41EMG3HDWB

Description:

ACC.FIL45 DOWNLIGHT EMERGENCIA 3H BK

**Product code:**

F41EMG3HDWG

Description:

ACC.FIL45 DOWNLIGHT EMERGENCIA 3H GR

**Product code:**

F41EMG3HDWW

Description:

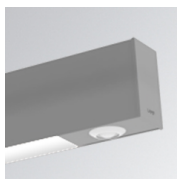
ACC.FIL45 DOWNLIGHT EMERGENCIA 3H WH

**Product code:**

F41LIGHTSNDB

Description:

ACC.FIL45 SENSOR BASIC ILD DALI-2 BK

**Product code:**

F41LIGHTSNDG

Description:

ACC.FIL45 SENSOR BASIC ILD DALI-2 GR

**Product code:**

F41LIGHTSNDW

Description:

ACC.FIL45 SENSOR BASIC ILD DALI-2 WH