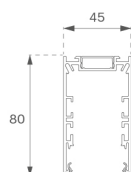


F41SF168MOIO840DG

**FIL45 SUR 1680 6100 NW D/I OPAL DALI GR.****Description:**

Suspended or mounted surface structure model FIL45 SUR 1680 D/I LAMP brand. Made in extruded recycled aluminum with a rate of 80%, with direct-indirect distribution, with opal polycarbonate diffuser. Model for LED MID-POWER, colour temperature 4000K with CRI80 and with electronic wiring Dali included. With IP20, IK07 protection rating. Insulation Class I. Photobiological safety group 0. LED life time: 70.000 L80 B10. Available finishes: White, black and grey. Environmental Product Declaration - EPD@available, according to UNE-EN ISO 9001:2015 and UNE-EN ISO 14001:2015.

Finish: Gloss grey**Dimensions:** 1.680 x 45 x 80 mm**Weight:** 3.876 g**Installation:** Surface**TECHNICAL SPECIFICATIONS:**

Light output:	3.992 lm	°K :	4000
Plum:	40,1W	CRI :	80
Efficacy:	99,5 lm/w	MacAdam:	3
Type:	MID POWER LED	Power Supply:	220-240V 50/60Hz
LED Lifetime:	70.000 L80 B10 (Ta=25°C)	Gear:	Adjustable DALI
Power:	36W		

Light output tolerance +/- 10%**CUSTOM MADE OPTIONS:**

ACCESSORIES :
Assembly**Product code:**

F4COX/MMB

Description:

FIL 45 ACC. COVER X/MM BK.

**Product code:**

F4COX/MMG

Description:

FIL 45 ACC. COVER X/MM GR.

**Product code:**

F4COX/MMW

Description:

FIL 45 ACC. COVER X/MM WH.

**Product code:**

F4FX50B

Description:

ACC. WALL BRACKET FIL45 50MM BK.

**Product code:**

F4FX50G

Description:

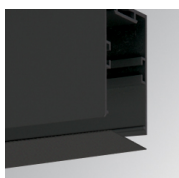
ACC. WALL BRACKET FIL45 50MM GR.

**Product code:**

F4FX50W

Description:

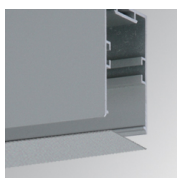
ACC. WALL BRACKET FIL45 50MM WH.

**Product code:**

F4PRSUX/MMB

Description:

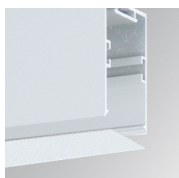
FIL 45 ACC. SUS PROFIL X/MM BK.

**Product code:**

F4PRSUX/MMG

Description:

FIL 45 ACC. SUS PROFIL X/MM GR.

**Product code:**

F4PRSUX/MMW

Description:

FIL 45 ACC. SUS PROFIL X/MM WH.

ACCESSORIES :
Suspension

**Product code:**

F4SUCAEMFA1000NB

F4SUCAEMFA4000NB

Description:

ACC. ELECMEC FIL45 QUICK SUSP 1M BK.

ACC. ELECMEC FIL45 QUICK SUSP 4M BK.

**Product code:**

F4SUCAEMFA1000NG

F4SUCAEMFA4000NG

Description:

ACC. ELECMEC FIL45 QUICK SUSP 1M GR.

ACC. ELECMEC FIL45 QUICK SUSP 4M GR.

**Product code:**

F4SUCAEMFA1000NW

F4SUCAEMFA4000NW

Description:

ACC. ELECMEC FIL45 QUICK SUSP 1M WH.

ACC. ELECMEC FIL45 QUICK SUSP 4M WH.

**Product code:**

F4SUCAWI1000DB

F4SUCAWI4000DB

Description:

ACC. ELECMEC FIL45 QUICK SUSP 1M 5P BK.

ACC. ELECMEC FIL45 QUICK SUSP 4M 5P BK.

**Product code:**

F4SUCAWI1000DG

F4SUCAWI4000DG

Description:

ACC. ELECMEC FIL45 QUICK SUSP 1M 5P GR.

ACC. ELECMEC FIL45 QUICK SUSP 4M 5P GR.

**Product code:**

F4SUCAWI1000DW

F4SUCAWI4000DW

Description:

ACC. ELECMEC FIL45 QUICK SUSP 1M 5P WH.

ACC. ELECMEC FIL45 QUICK SUSP 4M 5P WH.

**Product code:**

F4SUWIDE1000G

Description:

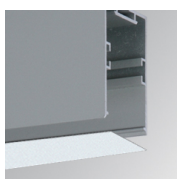
FIL45 ACC. QUICK STEEL CABLE 1M NK.

**Product code:**

F4SUWIDE4000G

Description:

FIL45 ACC. QUICK STEEL CABLE 4M NK.

ACCESSORIES :**Optical****Product code:**

F4DIX/MMOP

Description:

FIL 45 ACC. OPAL DIFFUSER X/MM

ACCESORIES :

Adjustment and control



Product code:
F41EMG3HDWB

Description:
ACC.FIL45 DOWNLIGHT EMERGENCIA 3H BK



Product code:
F41EMG3HDWG

Description:
ACC.FIL45 DOWNLIGHT EMERGENCIA 3H GR



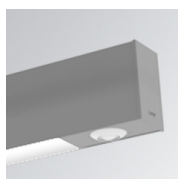
Product code:
F41EMG3HDWW

Description:
ACC.FIL45 DOWNLIGHT EMERGENCIA 3H WH



Product code:
F41LIGHTSNDB

Description:
ACC.FIL45 SENSOR BASIC ILD DALI-2 BK



Product code:
F41LIGHTSNDG

Description:
ACC.FIL45 SENSOR BASIC ILD DALI-2 GR



Product code:
F41LIGHTSNDW

Description:
ACC.FIL45 SENSOR BASIC ILD DALI-2 WH