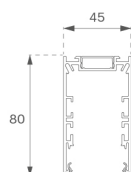


F41SF140MOIO830DW

**FIL45 SUR 1400 5000 WW D/I OPAL DALI WH.****Description:**

Suspended or mounted surface structure model FIL45 SUR 1400 D/I LAMP brand. Made in extruded recycled aluminum with a rate of 80%, with direct-indirect distribution, with opal polycarbonate diffuser. Model for LED MID-POWER, colour temperature 3000K with CRI80 and with electronic wiring Dali included. With IP20, IK07 protection rating. Insulation Class I. Photobiological safety group 0. LED life time: 70.000 L80 B10. Available finishes: White, black and grey. Environmental Product Declaration - EPD@available, according to UNE-EN ISO 9001:2015 and UNE-EN ISO 14001:2015.

**Finish:** Matte white RAL 9010**Dimensions:** 1.400 x 45 x 80 mm**Weight:** 3.348 g**Installation:** Surface**TECHNICAL SPECIFICATIONS:**

<b>Light output:</b>	3.188 lm	<b>°K :</b>	3000
<b>Plum:</b>	33,3W	<b>CRI :</b>	80
<b>Efficacy:</b>	95,7 lm/w	<b>MacAdam:</b>	3
<b>Type:</b>	MID POWER LED	<b>Power Supply:</b>	220-240V 50/60Hz
<b>LED Lifetime:</b>	70.000 L80 B10 (Ta=25°C)	<b>Gear:</b>	Adjustable DALI
<b>Power:</b>	30W		

**Light output tolerance +/- 10%****CUSTOM MADE OPTIONS:**

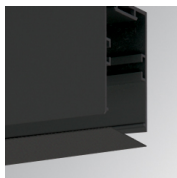
---

**ACCESSORIES :**
**Assembly****Product code:**

F42JO

**Description:**

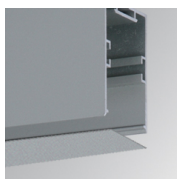
FIL45 ACC. SU/RE INTM JOINT B

**Product code:**

F4COX/MMB

**Description:**

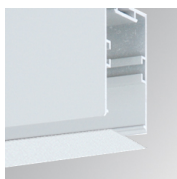
FIL 45 ACC. COVER X/MM BK.

**Product code:**

F4COX/MMG

**Description:**

FIL 45 ACC. COVER X/MM GR.

**Product code:**

F4COX/MMW

**Description:**

FIL 45 ACC. COVER X/MM WH.

**Product code:**

F4FX50B

**Description:**

ACC. WALL BRACKET FIL45 50MM BK.

**Product code:**

F4FX50G

**Description:**

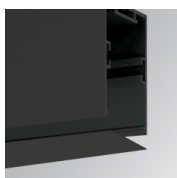
ACC. WALL BRACKET FIL45 50MM GR.

**Product code:**

F4FX50W

**Description:**

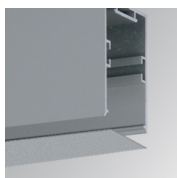
ACC. WALL BRACKET FIL45 50MM WH.

**Product code:**

F4PRSUX/MMB

**Description:**

FIL 45 ACC. SUS PROFIL X/MM BK.

**Product code:**

F4PRSUX/MMG

**Description:**

FIL 45 ACC. SUS PROFIL X/MM GR.

**Product code:**

F4PRSUX/MMW

**Description:**

FIL 45 ACC. SUS PROFIL X/MM WH.

---

**ACCESSORIES :**
**Suspension**



**Product code:**

F4SUCAEMFA1000NB

F4SUCAEMFA4000NB

**Description:**

ACC. ELECMEC FIL45 QUICK SUSP 1M BK.

ACC. ELECMEC FIL45 QUICK SUSP 4M BK.



**Product code:**

F4SUCAEMFA1000NG

F4SUCAEMFA4000NG

**Description:**

ACC. ELECMEC FIL45 QUICK SUSP 1M GR.

ACC. ELECMEC FIL45 QUICK SUSP 4M GR.



**Product code:**

F4SUCAEMFA1000NW

F4SUCAEMFA4000NW

**Description:**

ACC. ELECMEC FIL45 QUICK SUSP 1M WH.

ACC. ELECMEC FIL45 QUICK SUSP 4M WH.



**Product code:**

F4SUCAWI1000DB

F4SUCAWI4000DB

**Description:**

ACC. ELECMEC FIL45 QUICK SUSP 1M 5P BK.

ACC. ELECMEC FIL45 QUICK SUSP 4M 5P BK.



**Product code:**

F4SUCAWI1000DG

F4SUCAWI4000DG

**Description:**

ACC. ELECMEC FIL45 QUICK SUSP 1M 5P GR.

ACC. ELECMEC FIL45 QUICK SUSP 4M 5P GR.



**Product code:**

F4SUCAWI1000DW

F4SUCAWI4000DW

**Description:**

ACC. ELECMEC FIL45 QUICK SUSP 1M 5P WH.

ACC. ELECMEC FIL45 QUICK SUSP 4M 5P WH.



**Product code:**

F4SUWIDE1000G

**Description:**

FIL45 ACC. QUICK STEEL CABLE 1M NK.



**Product code:**

F4SUWIDE4000G

**Description:**

FIL45 ACC. QUICK STEEL CABLE 4M NK.

**ACCESSORIES :**

**Optical**



**Product code:**

F4DIX/MMOP

**Description:**

FIL 45 ACC. OPAL DIFFUSER X/MM

**ACCESORIES :**

**Adjustment and control**



**Product code:**  
F41EMG3HDWB

**Description:**  
ACC.FIL45 DOWNLIGHT EMERGENCIA 3H BK



**Product code:**  
F41EMG3HDWG

**Description:**  
ACC.FIL45 DOWNLIGHT EMERGENCIA 3H GR



**Product code:**  
F41EMG3HDWW

**Description:**  
ACC.FIL45 DOWNLIGHT EMERGENCIA 3H WH



**Product code:**  
F41LIGHTSNDB

**Description:**  
ACC.FIL45 SENSOR BASIC ILD DALI-2 BK



**Product code:**  
F41LIGHTSNDG

**Description:**  
ACC.FIL45 SENSOR BASIC ILD DALI-2 GR



**Product code:**  
F41LIGHTSNDW

**Description:**  
ACC.FIL45 SENSOR BASIC ILD DALI-2 WH