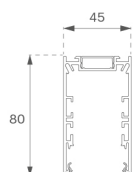


F41SF112MOPR940NB



- FIL45 SUR 1120 2600 9NW OP COMF BK.

Description:

Suspended or mounted surface structure model FIL45 SUR 1120 LAMP brand. Made in extruded recycled aluminum with a rate of 80%, with opal comfort diffuser made of a translucent polycarbonate diffuser and an optical film to achieve a controlled light distribution and low UGR<16. Model for LED MID-POWER, colour temperature 4000K with CRI90 and with electronic wiring included. With IP43, except for suspended installation, which becomes IP20, IK07 protection rating. Insulation Class I. Photobiological safety group 0. LED life time: 70.000 L80 B10. Available finishes: White, black and grey. Environmental Product Declaration - EPD@available, according to UNE-EN ISO 9001:2015 and UNE-EN ISO 14001:2015.

Finish: Matte black RAL 9011

Dimensions: 1.120 x 45 x 80 mm

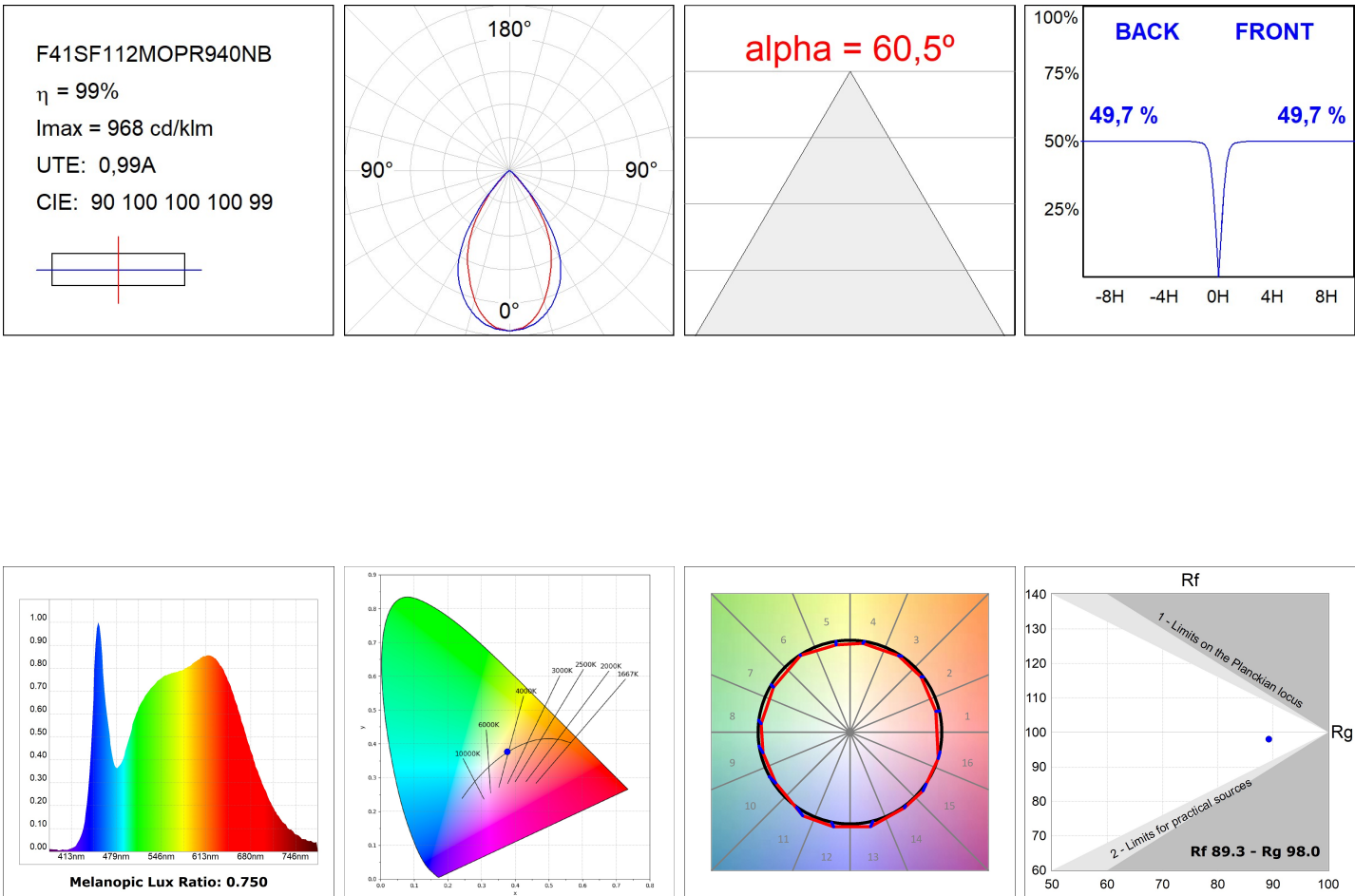
Weight: 2.400 g

Installation: Surface
TECHNICAL SPECIFICATIONS:

Light output:	1.695 lm	°K :	4000
Plum:	20,9W	CRI :	90
Efficacy:	81 lm/w	R9 :	71
UGR:	18	MacAdam:	3
Type:	MID POWER TRIDONIC	Power Supply:	220-240V 50/60Hz
LED Lifetime:	70.000 L80 B10 (Ta=25°C)	Gear:	Electronic
Power:	17,9W		

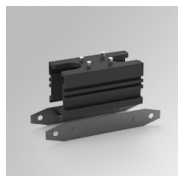
Light output tolerance +/- 10%
**CUSTOM MADE OPTIONS:**

PHOTOMETRIC DATA :



ACCESORIES :

Assembly

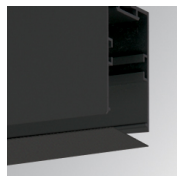


Product code:

F42JO

Description:

FIL45 ACC. SU/RE INTM JOINT B

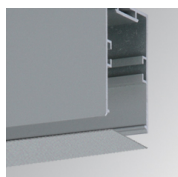


Product code:

F4COX/MMB

Description:

FIL 45 ACC. COVER X/MM BK.



Product code:

F4COX/MMG

Description:

FIL 45 ACC. COVER X/MM GR.

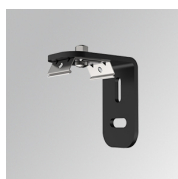


Product code:

F4COX/MMW

Description:

FIL 45 ACC. COVER X/MM WH.



Product code:

F4FX50B

Description:

ACC. WALL BRACKET FIL45 50MM BK.



Product code:

F4FX50G

Description:

ACC. WALL BRACKET FIL45 50MM GR.



Product code:

F4FX50W

Description:

ACC. WALL BRACKET FIL45 50MM WH.

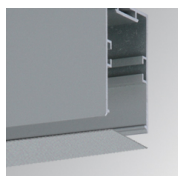


Product code:

F4PRSUX/MMB

Description:

FIL 45 ACC. SUS PROFIL X/MM BK.



Product code:

F4PRSUX/MMG

Description:

FIL 45 ACC. SUS PROFIL X/MM GR.

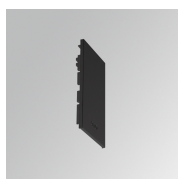


Product code:

F4PRSUX/MMW

Description:

FIL 45 ACC. SUS PROFIL X/MM WH.

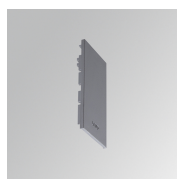


Product code:

F4SUECB

Description:

FIL45 ACC. SUR END COVER BK.



Product code:

F4SUECG

Description:

FIL45 ACC. SUR END COVER GR.



Product code:

F4SUECW

Description:

FIL45 ACC. SUR END COVER WH.

ACCESORIES :

Suspension



Product code:

F4SUCAEMFA1000NB

F4SUCAEMFA4000NB

Description:

ACC. ELECMEC FIL45 QUICK SUSP 1M BK.

ACC. ELECMEC FIL45 QUICK SUSP 4M BK.



Product code:

F4SUCAEMFA1000NG

F4SUCAEMFA4000NG

Description:

ACC. ELECMEC FIL45 QUICK SUSP 1M GR.

ACC. ELECMEC FIL45 QUICK SUSP 4M GR.



Product code:

F4SUCAEMFA1000NW

F4SUCAEMFA4000NW

Description:

ACC. ELECMEC FIL45 QUICK SUSP 1M WH.

ACC. ELECMEC FIL45 QUICK SUSP 4M WH.



Product code:

F4SUCAWI1000DB

F4SUCAWI4000DB

Description:

ACC. ELECMEC FIL45 QUICK SUSP 1M 5P BK.

ACC. ELECMEC FIL45 QUICK SUSP 4M 5P BK.



Product code:

F4SUCAWI1000DG

F4SUCAWI4000DG

Description:

ACC. ELECMEC FIL45 QUICK SUSP 1M 5P GR.

ACC. ELECMEC FIL45 QUICK SUSP 4M 5P GR.



Product code:

F4SUCAWI1000DW

F4SUCAWI4000DW

Description:

ACC. ELECMEC FIL45 QUICK SUSP 1M 5P WH.

ACC. ELECMEC FIL45 QUICK SUSP 4M 5P WH.



Product code:

F4SUWIDE1000G

Description:

FIL45 ACC. QUICK STEEL CABLE 1M NK.



Product code:

F4SUWIDE4000G

Description:

FIL45 ACC. QUICK STEEL CABLE 4M NK.

ACCESORIES :

Support



Product code:

F4FX15G

Description:

FIL45 ACC. CEILING BRACKET 15MM GR.

ACCESORIES :

Optical



Product code:

F4DIX/MMOP

Description:

FIL 45 ACC. OPAL DIFFUSER X/MM

ACCESORIES :

Adjustment and control



Product code:

F41EMG3HDWB

Description:

ACC.FIL45 DOWNLIGHT EMERGENCIA 3H BK



Product code:

F41EMG3HDWG

Description:

ACC.FIL45 DOWNLIGHT EMERGENCIA 3H GR

FIL45



Product code:
F41EMG3HDWW

Description:
ACC.FIL45 DOWNLIGHT EMERGENCIA 3H WH



Product code:
F41LIGHTSNDB

Description:
ACC.FIL45 SENSOR BASIC ILD DALI-2 BK



Product code:
F41LIGHTSNDG

Description:
ACC.FIL45 SENSOR BASIC ILD DALI-2 GR



Product code:
F41LIGHTSNDW

Description:
ACC.FIL45 SENSOR BASIC ILD DALI-2 WH