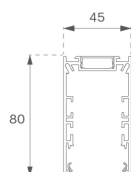


F41SF084MOPR935NW

**FIL45 SUR 840 1950 935 OP COMF WH.****Description:**

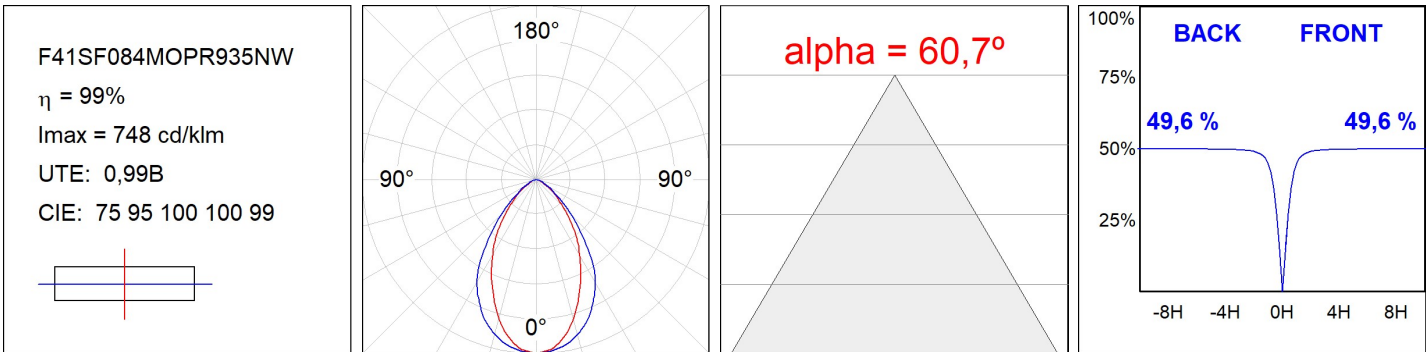
Suspended or mounted surface structure model FIL45 SUR 840 LAMP brand. Made in extruded recycled aluminum with a rate of 80%, with opal comfort diffuser made of a translucent polycarbonate diffuser and an optical film to achieve a controlled light distribution and low UGR<16. Model for LED MID-POWER, colour temperature 3500K with CRI90 and with electronic wiring included. With IP43, except for suspended installation, which becomes IP20, IK07 protection rating. Insulation Class I. Photobiological safety group 0. LED life time: 70.000 L80 B10. Available finishes: White, black and grey. Environmental Product Declaration - EPD@available, according to UNE-EN ISO 9001:2015 and UNE-EN ISO 14001:2015.

**Finish:** Matte white RAL 9010**Dimensions:** 840 x 45 x 80 mm**Weight:** 1.850 g**Installation:** Surface**TECHNICAL SPECIFICATIONS:**

<b>Light output:</b>	1.253 lm	<b>°K :</b>	3500
<b>Plum:</b>	15,5W	<b>CRI :</b>	90
<b>Efficacy:</b>	80,8 lm/w	<b>MacAdam:</b>	3
<b>UGR:</b>	18	<b>Power Supply:</b>	220-240V 50/60Hz
<b>Type:</b>	MID POWER TRIDONIC	<b>Gear:</b>	Electronic
<b>LED Lifetime:</b>	70.000 L80 B10 (Ta=25°C)		
<b>Power:</b>	13,5W		

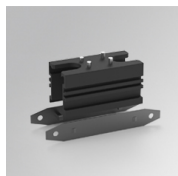
**Light output tolerance +/- 10%****CUSTOM MADE OPTIONS:**

PHOTOMETRIC DATA :



## ACCESSORIES :

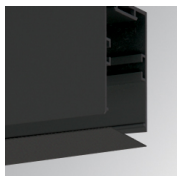
## Assembly

**Product code:**

F42JO

**Description:**

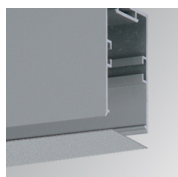
FIL45 ACC. SU/RE INTM JOINT B

**Product code:**

F4COX/MMB

**Description:**

FIL 45 ACC. COVER X/MM BK.

**Product code:**

F4COX/MMG

**Description:**

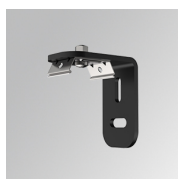
FIL 45 ACC. COVER X/MM GR.

**Product code:**

F4COX/MMW

**Description:**

FIL 45 ACC. COVER X/MM WH.

**Product code:**

F4FX50B

**Description:**

ACC. WALL BRACKET FIL45 50MM BK.

**Product code:**

F4FX50G

**Description:**

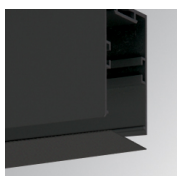
ACC. WALL BRACKET FIL45 50MM GR.

**Product code:**

F4FX50W

**Description:**

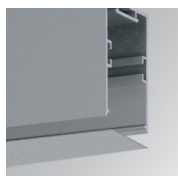
ACC. WALL BRACKET FIL45 50MM WH.

**Product code:**

F4PRSUX/MMB

**Description:**

FIL 45 ACC. SUS PROFIL X/MM BK.

**Product code:**

F4PRSUX/MMG

**Description:**

FIL 45 ACC. SUS PROFIL X/MM GR.

**Product code:**

F4PRSUX/MMW

**Description:**

FIL 45 ACC. SUS PROFIL X/MM WH.



**Product code:**

F4SUECB

**Description:**

FIL45 ACC. SUR END COVER BK.



**Product code:**

F4SUECG

**Description:**

FIL45 ACC. SUR END COVER GR.



**Product code:**

F4SUECW

**Description:**

FIL45 ACC. SUR END COVER WH.

**ACCESORIES :**

**Suspension**



**Product code:**

F4SUCAEMFA1000NB

F4SUCAEMFA4000NB

**Description:**

ACC. ELECMEC FIL45 QUICK SUSP 1M BK.

ACC. ELECMEC FIL45 QUICK SUSP 4M BK.



**Product code:**

F4SUCAEMFA1000NG

F4SUCAEMFA4000NG

**Description:**

ACC. ELECMEC FIL45 QUICK SUSP 1M GR.

ACC. ELECMEC FIL45 QUICK SUSP 4M GR.



**Product code:**

F4SUCAEMFA1000NW

F4SUCAEMFA4000NW

**Description:**

ACC. ELECMEC FIL45 QUICK SUSP 1M WH.

ACC. ELECMEC FIL45 QUICK SUSP 4M WH.



**Product code:**

F4SUCAWI1000DB

F4SUCAWI4000DB

**Description:**

ACC. ELECMEC FIL45 QUICK SUSP 1M 5P BK.

ACC. ELECMEC FIL45 QUICK SUSP 4M 5P BK.



**Product code:**

F4SUCAWI1000DG

F4SUCAWI4000DG

**Description:**

ACC. ELECMEC FIL45 QUICK SUSP 1M 5P GR.

ACC. ELECMEC FIL45 QUICK SUSP 4M 5P GR.



**Product code:**

F4SUCAWI1000DW

F4SUCAWI4000DW

**Description:**

ACC. ELECMEC FIL45 QUICK SUSP 1M 5P WH.

ACC. ELECMEC FIL45 QUICK SUSP 4M 5P WH.



**Product code:**

F4SUWIDE1000G

**Description:**

FIL45 ACC. QUICK STEEL CABLE 1M NK.



**Product code:**

F4SUWIDE4000G

**Description:**

FIL45 ACC. QUICK STEEL CABLE 4M NK.

---

**ACCESORIES :**

**Support**



**Product code:**

F4FX15G

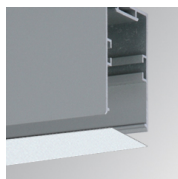
**Description:**

FIL45 ACC. CEILING BRACKET 15MM GR.

---

**ACCESORIES :**

**Optical**



**Product code:**

F4DIX/MMOP

**Description:**

FIL 45 ACC. OPAL DIFFUSER X/MM