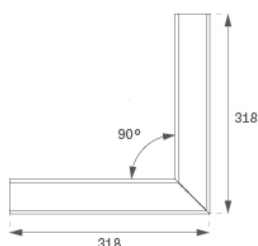
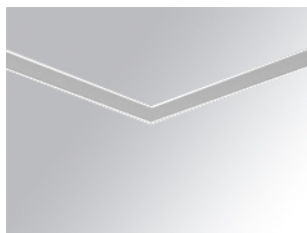


F41RECRMOPR830NW



FIL45 CORNER REC 1300 WW OP COMF WH.

Description:

Structure to recessed model FIL45 CORNER REC LAMP brand. Made in extruded recycled aluminum with a rate of 80%, with opal comfort diffuser made of a translucent polycarbonate diffuser and an optical film to achieve a controlled light distribution and low UGR<16. Model for LED MID-POWER, colour temperature 3000K with CRI80 and with electronic wiring included. With IP43, IK07 protection rating. Insulation class I. Photobiological safety group 0. LED life time: 70.000 L80 B10. Available finishes: White, black and grey. Environmental Product Declaration - EPD@available, according to UNE-EN ISO 9001:2015 and UNE-EN ISO 14001:2015.

Finish: Matte white RAL 9010

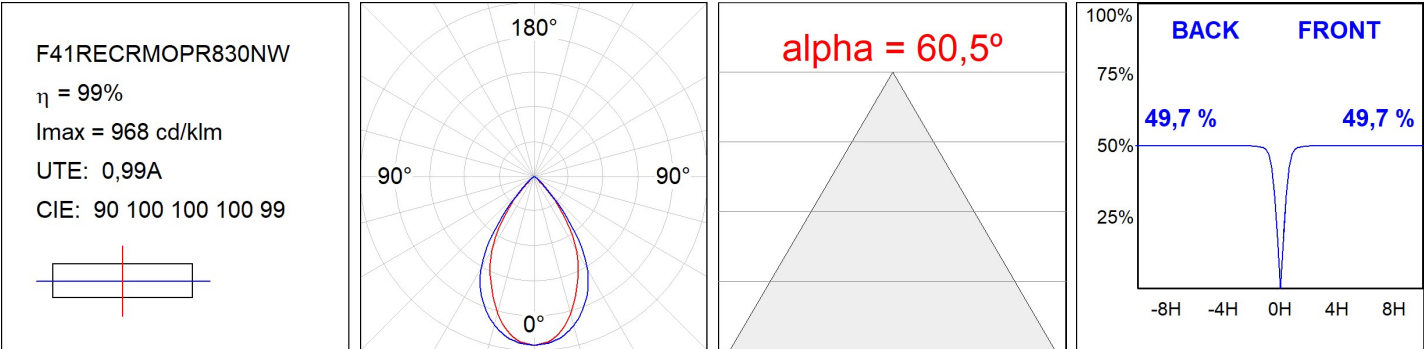
Weight: 1.320 g

Installation: Recessed
TECHNICAL SPECIFICATIONS:

Light output:	960 lm	°K :	3000
Plum:	10,8W	CRI :	80
Efficacy:	88,9 lm/w	MacAdam:	3
UGR:	<16	Power Supply:	220-240V 50/60Hz
Type:	MID POWER LED	Gear:	Electronic
LED Lifetime:	70.000 L80 B10 (Ta=25°C)		
Power:	9W		

Light output tolerance +/- 10%
**CUSTOM MADE OPTIONS:**

PHOTOMETRIC DATA :



ACCESSORIES :

Assembly

**Product code:**

F42JO

Description:

FIL45 ACC. SU/RE INTM JOINT B

**Product code:**

F4COX/MMB

Description:

FIL 45 ACC. COVER X/MM BK.

**Product code:**

F4COX/MMG

Description:

FIL 45 ACC. COVER X/MM GR.

**Product code:**

F4COX/MMW

Description:

FIL 45 ACC. COVER X/MM WH.

**Product code:**

F4PRREX/MMB

Description:

FIL 45 ACC. REC PROFIL X/MM BK.

**Product code:**

F4PRREX/MMG

Description:

FIL 45 ACC. REC PROFIL X/MM GR.

**Product code:**

F4PRREX/MMW

Description:

FIL 45 ACC. REC PROFIL X/MM WH.

**Product code:**

F4REECB

Description:

FIL45 ACC. REC END COVER BK.

**Product code:**

F4REECG

Description:

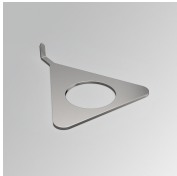
FIL45 ACC. REC END COVER GR.

**Product code:**

F4REECW

Description:

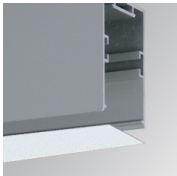
FIL45 ACC. REC END COVER WH.



Product code:
F4TORFG

Description:
FIL45 ACC. TOOL REMOVE REFLECTOR

ACCESORIES :
Optical



Product code:
F4DIX/MMOP

Description:
FIL 45 ACC. OPAL DIFFUSER X/MM