

## F41RE224HOOP840DW



## FIL45 REC 2240 12400 NW OPAL DALI WH.

**Description:**

Structure to recessed model FIL45 REC 2240 LAMP brand. Made in extruded recycled aluminum with a rate of 80%, with opal polycarbonate diffuser. Model for LED MID-POWER, colour temperature 4000K with CRI80 and with electronic wiring Dali included. With IP43, IK07 protection rating. Insulation Class I. Photobiological safety group 0. LED life time: 72.000 L80 B10. Available finishes: White, black and grey. Environmental Product Declaration - EPD@available, according to UNE-EN ISO 9001:2015 and UNE-EN ISO 14001:2015.

**Finish:** Matte white RAL 9010

**Dimensions:** 2.240 x 55 x 76 mm

**Weight:** 5.260 g

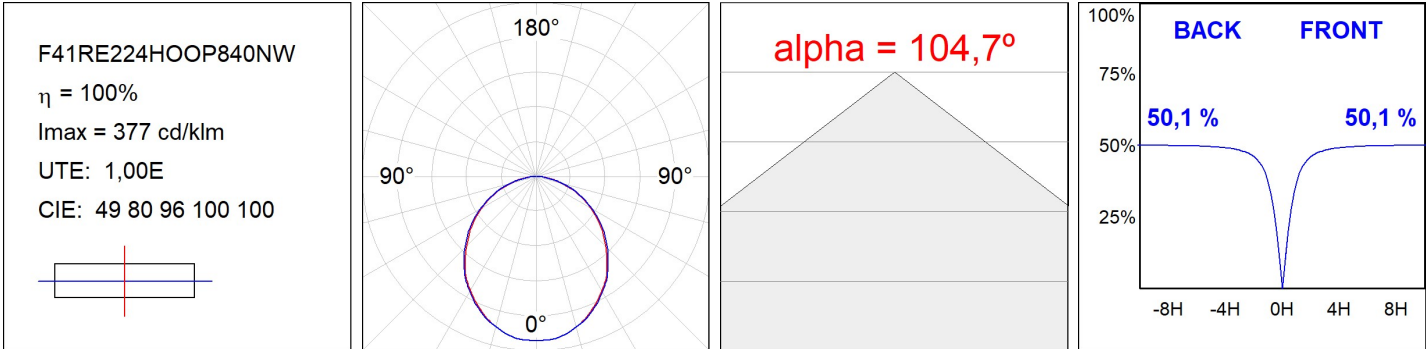
**Installation:** Recessed

**Recessing measures:** 2,246 x 51 x 0 mm
**TECHNICAL SPECIFICATIONS:**

|                      |                          |                      |                  |
|----------------------|--------------------------|----------------------|------------------|
| <b>Light output:</b> | 7.814 lm                 | <b>°K :</b>          | 4000             |
| <b>Plum:</b>         | 70W                      | <b>CRI :</b>         | 80               |
| <b>Efficacy:</b>     | 111,6 lm/w               | <b>MacAdam:</b>      | 3                |
| <b>Type:</b>         | MID POWER LED            | <b>Power Supply:</b> | 220-240V 50/60Hz |
| <b>LED Lifetime:</b> | 72.000 L80 B10 (Ta=25°C) | <b>Gear:</b>         | Adjustable DALI  |
| <b>Power:</b>        | 72W                      |                      |                  |

*Light output tolerance +/- 10%*
**CUSTOM MADE OPTIONS:**

PHOTOMETRIC DATA :



---

**ACCESSORIES :**
**Assembly****Product code:**

F42JO

**Description:**

FIL45 ACC. SU/RE INTM JOINT B

**Product code:**

F4COX/MMB

**Description:**

FIL 45 ACC. COVER X/MM BK.

**Product code:**

F4COX/MMG

**Description:**

FIL 45 ACC. COVER X/MM GR.

**Product code:**

F4COX/MMW

**Description:**

FIL 45 ACC. COVER X/MM WH.

**Product code:**

F4PRREX/MMB

**Description:**

FIL 45 ACC. REC PROFIL X/MM BK.

**Product code:**

F4PRREX/MMG

**Description:**

FIL 45 ACC. REC PROFIL X/MM GR.

**Product code:**

F4PRREX/MMW

**Description:**

FIL 45 ACC. REC PROFIL X/MM WH.

**Product code:**

F4REECB

**Description:**

FIL45 ACC. REC END COVER BK.

**Product code:**

F4REECG

**Description:**

FIL45 ACC. REC END COVER GR.

**Product code:**

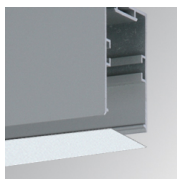
F4TORFG

**Description:**

FIL45 ACC. TOOL REMOVE REFLECTOR

---

**ACCESSORIES :**
**Optical**



**Product code:**

F4DIX/MMOP

**Description:**

FIL 45 ACC. OPAL DIFFUSER X/MM

## ACCESSORIES :

### Adjustment and control



**Product code:**

F41EMG3HDWB

**Description:**

ACC.FIL45 DOWNLIGHT EMERGENCIA 3H BK



**Product code:**

F41EMG3HDWG

**Description:**

ACC.FIL45 DOWNLIGHT EMERGENCIA 3H GR



**Product code:**

F41EMG3HDWW

**Description:**

ACC.FIL45 DOWNLIGHT EMERGENCIA 3H WH

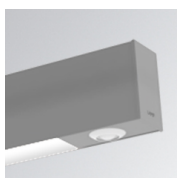


**Product code:**

F41LIGHTSNDB

**Description:**

ACC.FIL45 SENSOR BASIC ILD DALI-2 BK



**Product code:**

F41LIGHTSNDG

**Description:**

ACC.FIL45 SENSOR BASIC ILD DALI-2 GR



**Product code:**

F41LIGHTSNDW

**Description:**

ACC.FIL45 SENSOR BASIC ILD DALI-2 WH