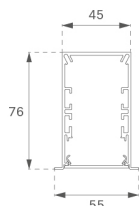


F41RE168MOPR940DW



**FIL45 REC 1680 3900 9NW OP COMF DALI WH.**

**Description:**

Structure to recessed model FIL45 REC 1680 LAMP brand. Made in extruded recycled aluminum with a rate of 80%, with opal comfort diffuser made of a translucent polycarbonate diffuser and an optical film to achieve a controlled light distribution and low UGR<16. Model for LED MID-POWER, colour temperature 4000K with CRI90 and with electronic wiring Dali included. With IP20, IK07 protection rating. Insulation Class I. Photobiological safety group 0. LED life time: 70.000 L80 B10. Available finishes: White, black and grey. Environmental Product Declaration - EPD@available, according to UNE-EN ISO 9001:2015 and UNE-EN ISO 14001:2015.

**Finish:** Matte white RAL 9010

**Dimensions:** 1.680 x 55 x 76 mm

**Weight:** 3.920 g

**Installation:** Recessed

**Recessing measures:** 1,686 x 51 x 0 mm

**TECHNICAL SPECIFICATIONS:**

<b>Light output:</b>	2.210 lm	<b>°K :</b>	4000
<b>Plum:</b>	24,7W	<b>CRI :</b>	90
<b>Efficacy:</b>	89,4 lm/w	<b>R9 :</b>	71
<b>UGR:</b>	<16	<b>MacAdam:</b>	3
<b>Type:</b>	MID POWER LED	<b>Power Supply:</b>	220-240V 50/60Hz
<b>LED Lifetime:</b>	70.000 L80 B10 (Ta=25°C)	<b>Gear:</b>	Adjustable DALI
<b>Power:</b>	23W		

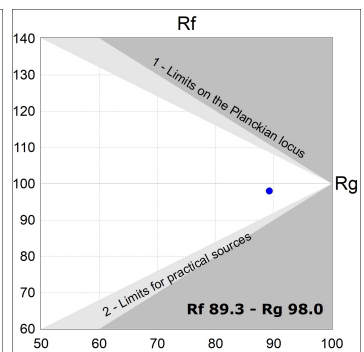
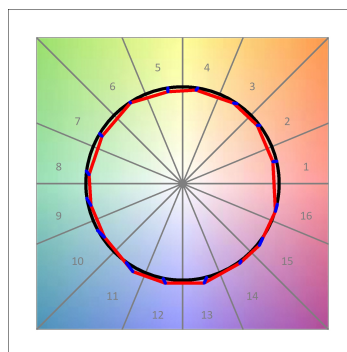
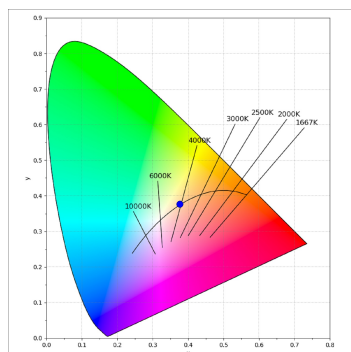
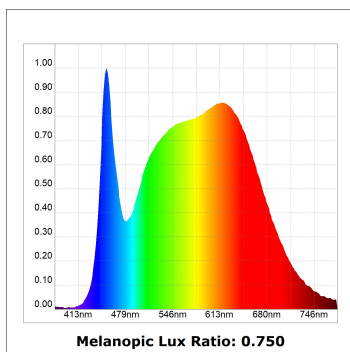
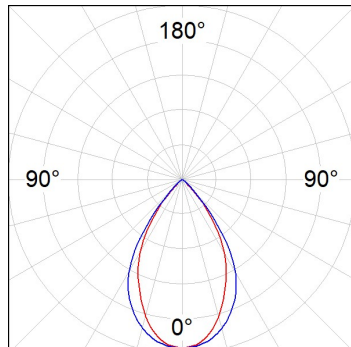
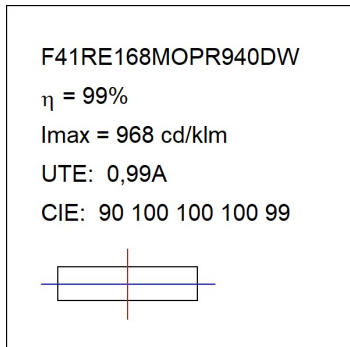
*Light output tolerance +/- 10%*



**CUSTOM MADE OPTIONS:**



PHOTOMETRIC DATA :



ACCESORIES :

Assembly



**Product code:**  
F4COX/MMB

**Description:**  
FIL 45 ACC. COVER X/MM BK.



**Product code:**  
F4COX/MMG

**Description:**  
FIL 45 ACC. COVER X/MM GR.



**Product code:**  
F4COX/MMW

**Description:**  
FIL 45 ACC. COVER X/MM WH.



**Product code:**  
F4PRREX/MMB

**Description:**  
FIL 45 ACC. REC PROFIL X/MM BK.



**Product code:**  
F4PRREX/MMG

**Description:**  
FIL 45 ACC. REC PROFIL X/MM GR.



**Product code:**  
F4PRREX/MMW

**Description:**  
FIL 45 ACC. REC PROFIL X/MM WH.



**Product code:**  
F4REECB

**Description:**  
FIL45 ACC. REC END COVER BK.



**Product code:**  
F4REECG

**Description:**  
FIL45 ACC. REC END COVER GR.



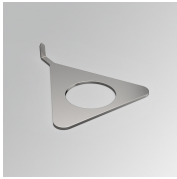
**Product code:**  
F4REECW

**Description:**  
FIL45 ACC. REC END COVER WH.



**Product code:**  
F4REJO

**Description:**  
FIL45 ACC. INTM JOINT B RECESSED



**Product code:**

F4TORFG

**Description:**

FIL45 ACC. TOOL REMOVE REFLECTOR

---

**ACCESSORIES :**

**Optical**



**Product code:**

F4DIX/MMOP

**Description:**

FIL 45 ACC. OPAL DIFFUSER X/MM

---

**ACCESSORIES :**

**Adjustment and control**



**Product code:**

F41EMG3HDWB

**Description:**

ACC.FIL45 DOWNLIGHT EMERGENCIA 3H BK



**Product code:**

F41EMG3HDWG

**Description:**

ACC.FIL45 DOWNLIGHT EMERGENCIA 3H GR



**Product code:**

F41EMG3HDWW

**Description:**

ACC.FIL45 DOWNLIGHT EMERGENCIA 3H WH



**Product code:**

F41LIGHTSNDB

**Description:**

ACC.FIL45 SENSOR BASIC ILD DALI-2 BK



**Product code:**

F41LIGHTSNDG

**Description:**

ACC.FIL45 SENSOR BASIC ILD DALI-2 GR



**Product code:**

F41LIGHTSNDW

**Description:**

ACC.FIL45 SENSOR BASIC ILD DALI-2 WH