

F41RE168MOPR930NB



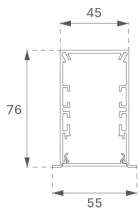
- FIL45 REC 1680 3900 9WW OP COMF BK.

Description:

Finition: Noir mat RAL 9011

Installation: Encastré

Mesures encastrement: 1,686 x 0 x 0



SPÉCIFICATIONS TECHNIQUES:

UGR: <16

°K : 3000

Alimentation: 220-240V 50/60Hz

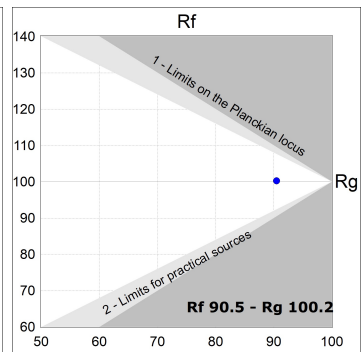
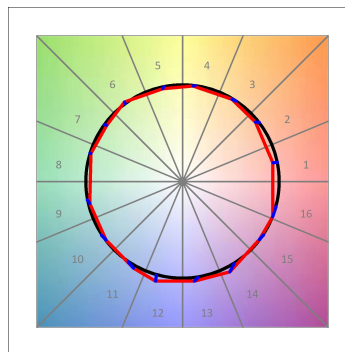
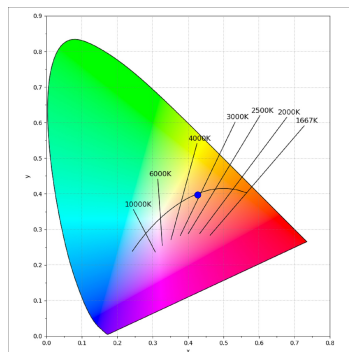
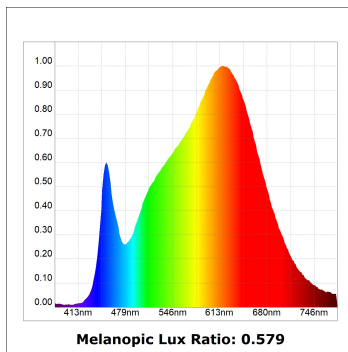
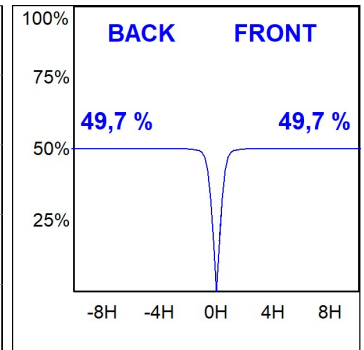
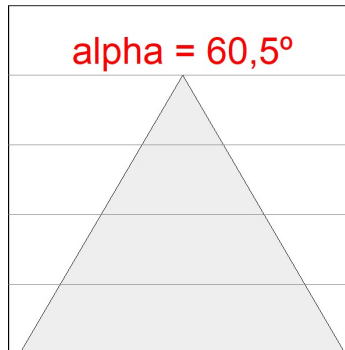
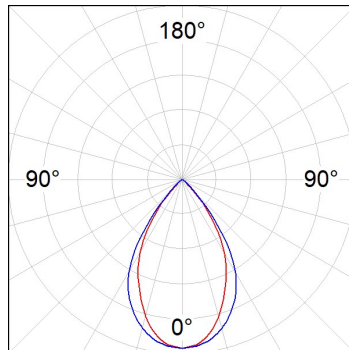
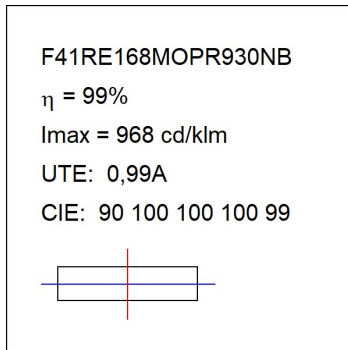
Équipement: Électronique



OPTIONS PERSONNALISABLES:



DONNÉES PHOTOMÉTRIQUES :



ACCESSOIRES :

Montage



Code produit:

F4COX/MMB

Description:

FIL 45 ACC. COVER X/MM BK.

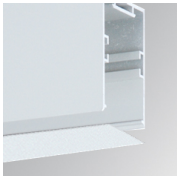


Code produit:

F4COX/MMG

Description:

FIL 45 ACC. COVER X/MM GR.

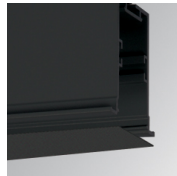


Code produit:

F4COX/MMW

Description:

FIL 45 ACC. COVER X/MM WH.

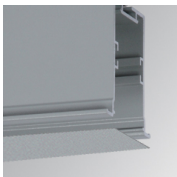


Code produit:

F4PRREX/MMB

Description:

FIL 45 ACC. REC PROFIL X/MM BK.

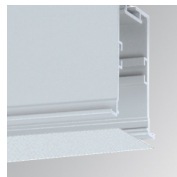


Code produit:

F4PRREX/MMG

Description:

FIL 45 ACC. REC PROFIL X/MM GR.

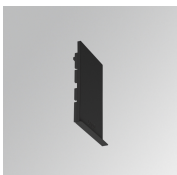


Code produit:

F4PRREX/MMW

Description:

FIL 45 ACC. REC PROFIL X/MM WH.

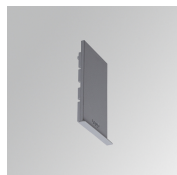


Code produit:

F4REECB

Description:

FIL45 ACC. REC END COVER BK.



Code produit:

F4REECG

Description:

FIL45 ACC. REC END COVER GR.

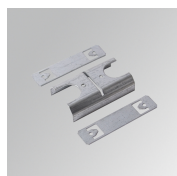


Code produit:

F4REECW

Description:

FIL45 ACC. REC END COVER WH.



Code produit:

F4REJO

Description:

FIL45 ACC. INTM JOINT B RECESSED



Code produit:

F4TORFG

Description:

FIL45 ACC. TOOL REMOVE REFLECTOR

ACCESSOIRES :

Optique



Code produit:

F4DIX/MMOP

Description:

FIL 45 ACC. OPAL DIFFUSER X/MM

ACCESSOIRES :

Contrôle et réglage



Code produit:

F41EMG3HDWB

Description:

ACC.FIL45 DOWNLIGHT EMERGENCIA 3H BK



Code produit:

F41EMG3HDWG

Description:

ACC.FIL45 DOWNLIGHT EMERGENCIA 3H GR



Code produit:

F41EMG3HDWW

Description:

ACC.FIL45 DOWNLIGHT EMERGENCIA 3H WH



Code produit:

F41LIGHTSNDB

Description:

ACC.FIL45 SENSOR BASIC ILD DALI-2 BK



Code produit:

F41LIGHTSNDG

Description:

ACC.FIL45 SENSOR BASIC ILD DALI-2 GR



Code produit:

F41LIGHTSNDW

Description:

ACC.FIL45 SENSOR BASIC ILD DALI-2 WH