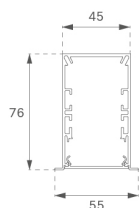


F41RE168MOPR840DW



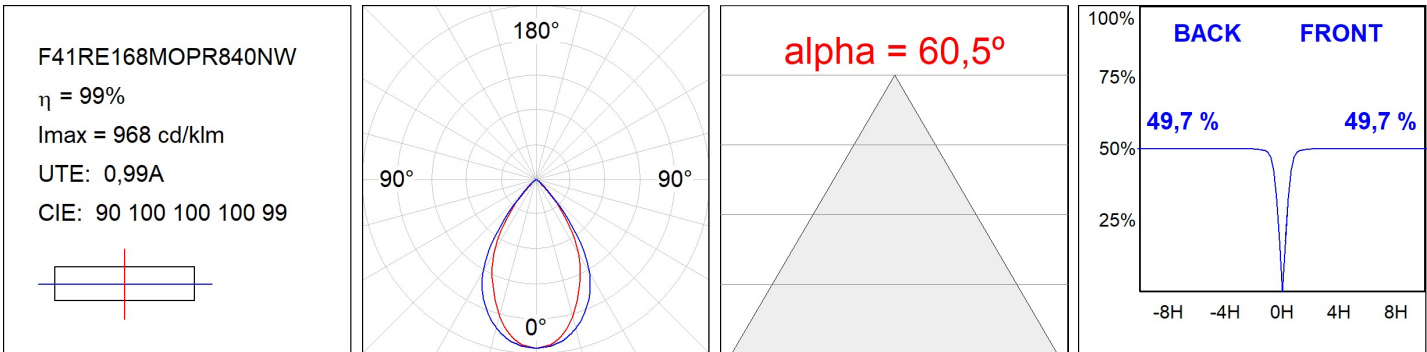
FIL45 REC 1680 3900 NW OP COMF DALI WH.

Description:

Structure to recessed model FIL45 REC 1680 LAMP brand. Made in extruded recycled aluminum with a rate of 80%, with opal comfort diffuser made of a translucent polycarbonate diffuser and an optical film to achieve a controlled light distribution and low UGR<16. Model for LED MID-POWER, colour temperature 4000K with CRI80 and with electronic wiring Dali included. With IP43, IK07 protection rating. Insulation Class I. Photobiological safety group 0. LED life time: 70.000 L80 B10. Available finishes: White, black and grey. Environmental Product Declaration - EPD@available, according to UNE-EN ISO 9001:2015 and UNE-EN ISO 14001:2015.

Finish: Matte white RAL 9010**Dimensions:** 1.680 x 55 x 76 mm**Weight:** 3.720 g**Installation:** Recessed**Recessing measures:** 1,686 x 51 x 0 mm**TECHNICAL SPECIFICATIONS:****Light output:** 3.026 lm**°K :** 4000**Plum:** 30,8W**CRI :** 80**Efficacy:** 98,2 lm/w**MacAdam:** 3**UGR:** <16**Power Supply:** 220-240V 50/60Hz**Type:** MID POWER LED**Gear:** Adjustable DALI**LED Lifetime:** 70.000 L80 B10 (Ta=25°C)**Power:** 26,9W**Light output tolerance +/- 10%****CUSTOM MADE OPTIONS:**

PHOTOMETRIC DATA :



ACCESSORIES :

Assembly

**Product code:**

F42JO

Description:

FIL45 ACC. SU/RE INTM JOINT B

**Product code:**

F4COX/MMB

Description:

FIL 45 ACC. COVER X/MM BK.

**Product code:**

F4COX/MMG

Description:

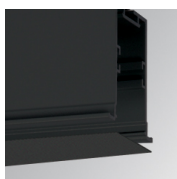
FIL 45 ACC. COVER X/MM GR.

**Product code:**

F4COX/MMW

Description:

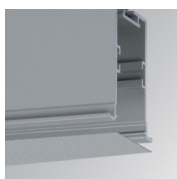
FIL 45 ACC. COVER X/MM WH.

**Product code:**

F4PRREX/MMB

Description:

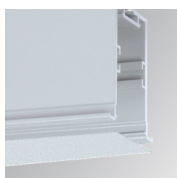
FIL 45 ACC. REC PROFIL X/MM BK.

**Product code:**

F4PRREX/MMG

Description:

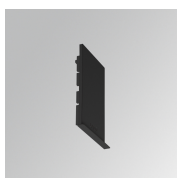
FIL 45 ACC. REC PROFIL X/MM GR.

**Product code:**

F4PRREX/MMW

Description:

FIL 45 ACC. REC PROFIL X/MM WH.

**Product code:**

F4REECB

Description:

FIL45 ACC. REC END COVER BK.

**Product code:**

F4REECG

Description:

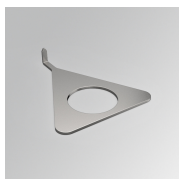
FIL45 ACC. REC END COVER GR.

**Product code:**

F4REECW

Description:

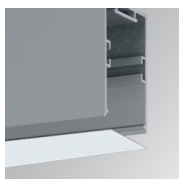
FIL45 ACC. REC END COVER WH.

**Product code:**

F4TORFG

Description:

FIL45 ACC. TOOL REMOVE REFLECTOR

ACCESORIES :**Optical****Product code:**

F4DIX/MMOP

Description:

FIL 45 ACC. OPAL DIFFUSER X/MM

ACCESORIES :**Adjustment and control****Product code:**

F41EMG3HDWB

Description:

ACC.FIL45 DOWNLIGHT EMERGENCIA 3H BK

**Product code:**

F41EMG3HDWG

Description:

ACC.FIL45 DOWNLIGHT EMERGENCIA 3H GR

**Product code:**

F41EMG3HDWW

Description:

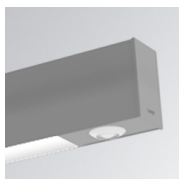
ACC.FIL45 DOWNLIGHT EMERGENCIA 3H WH

**Product code:**

F41LIGHTSNDB

Description:

ACC.FIL45 SENSOR BASIC ILD DALI-2 BK

**Product code:**

F41LIGHTSNDG

Description:

ACC.FIL45 SENSOR BASIC ILD DALI-2 GR

**Product code:**

F41LIGHTSNDW

Description:

ACC.FIL45 SENSOR BASIC ILD DALI-2 WH