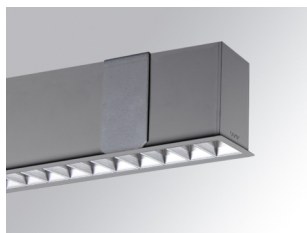


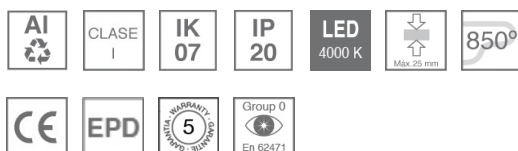
## F41RE112MOTEB40DG



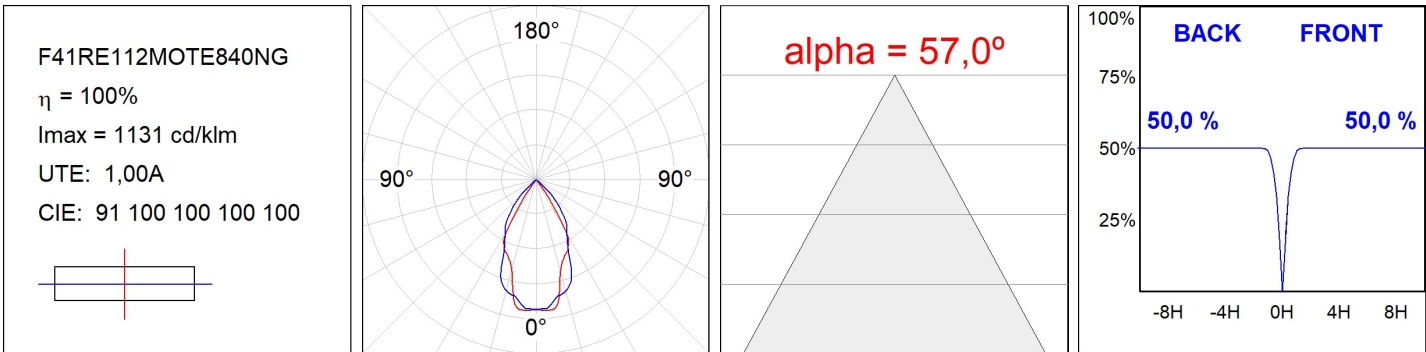
## FIL45 REC 1120 2600 NW TECH DALI GR.

**Description:**

Structure to recessed model FIL45 REC 1120 LAMP brand. Made in extruded recycled aluminum with a rate of 80%, with metallic polycarbonate diffuser tech. Model for LED MID-POWER, colour temperature 4000K with CRI80 and with electronic wiring Dali included. With IP20, IK07 protection rating. Insulation Class I. Photobiological safety group 0. LED life time: 70.000 L80 B10. Available finishes: White, black and grey. Environmental Product Declaration - EPD@available, according to UNE-EN ISO 9001:2015 and UNE-EN ISO 14001:2015.

**Finish:** Gloss grey**Dimensions:** 1.120 x 55 x 76 mm**Weight:** 2.660 g**Installation:** Recessed**Recessing measures:** 1,126 x 51 x 0 mm**TECHNICAL SPECIFICATIONS:****Light output:** 1.961 lm**°K :** 4000**Plum:** 18,5W**CRI :** 80**Efficacy:** 106 lm/w**MacAdam:** 3**UGR:** 17**Power Supply:** 220-240V 50/60Hz**Type:** MID POWER LED**Gear:** Adjustable DALI**LED Lifetime:** 70.000 L80 B10 (Ta=25°C)**Power:** 16W**Light output tolerance +/- 10%****CUSTOM MADE OPTIONS:**

PHOTOMETRIC DATA :



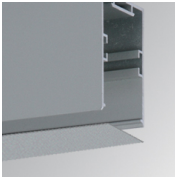
ACCESSORIES :

Assembly



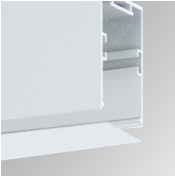
**Product code:**  
F4COX/MMB

**Description:**  
FIL 45 ACC. COVER X/MM BK.



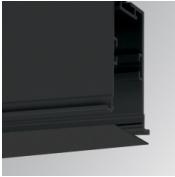
**Product code:**  
F4COX/MMG

**Description:**  
FIL 45 ACC. COVER X/MM GR.



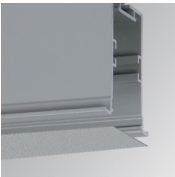
**Product code:**  
F4COX/MMW

**Description:**  
FIL 45 ACC. COVER X/MM WH.



**Product code:**  
F4PRREX/MMB

**Description:**  
FIL 45 ACC. REC PROFIL X/MM BK.



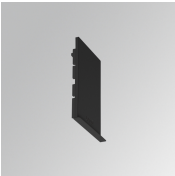
**Product code:**  
F4PRREX/MMG

**Description:**  
FIL 45 ACC. REC PROFIL X/MM GR.



**Product code:**  
F4PRREX/MMW

**Description:**  
FIL 45 ACC. REC PROFIL X/MM WH.



**Product code:**  
F4REECB

**Description:**  
FIL45 ACC. REC END COVER BK.



**Product code:**  
F4REECG

**Description:**  
FIL45 ACC. REC END COVER GR.



**Product code:**  
F4REECW

**Description:**  
FIL45 ACC. REC END COVER WH.



**Product code:**  
F4REJO

**Description:**  
FIL45 ACC. INTM JOINT B RECESSED

**Product code:**

F4TORFG

**Description:**

FIL45 ACC. TOOL REMOVE REFLECTOR

---

**ACCESORIES :****Optical****Product code:**

F4DIX/MMOP

**Description:**

FIL 45 ACC. OPAL DIFFUSER X/MM

---

**ACCESORIES :****Adjustment and control****Product code:**

F41EMG3HDWB

**Description:**

ACC.FIL45 DOWNLIGHT EMERGENCIA 3H BK

**Product code:**

F41EMG3HDWG

**Description:**

ACC.FIL45 DOWNLIGHT EMERGENCIA 3H GR

**Product code:**

F41EMG3HDWW

**Description:**

ACC.FIL45 DOWNLIGHT EMERGENCIA 3H WH

**Product code:**

F41LIGHTSNDB

**Description:**

ACC.FIL45 SENSOR BASIC ILD DALI-2 BK

**Product code:**

F41LIGHTSNDG

**Description:**

ACC.FIL45 SENSOR BASIC ILD DALI-2 GR

**Product code:**

F41LIGHTSNDW

**Description:**

ACC.FIL45 SENSOR BASIC ILD DALI-2 WH