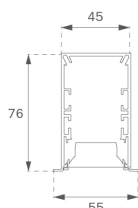


## F41RE112MOTE830DW



FIL45 REC 1120 2600 WW TECH DALI WH.

**Description:**

Structure to recessed model FIL45 REC 1120 LAMP brand. Made in extruded recycled aluminum with a rate of 80%, with metallic polycarbonate diffuser tech. Model for LED MID-POWER, colour temperature 3000K with CRI80 and with electronic wiring DALI included. With IP20, IK07 protection rating. Insulation Class I. Photobiological safety group 0. LED life time: 70.000 L80 B10. Available finishes: White, black and grey. Environmental Product Declaration - EPD®available, according to UNE-EN ISO 9001:2015 and UNE-EN ISO 14001:2015.

**Finish:** Matte white RAL 9010

**Dimensions:** 1.120 x 55 x 76 mm

**Weight:** 2.660 a

**Installation:** Recessed

**Recessing measures:** 1,126 x 51 x 0 mm

### TECHNICAL SPECIFICATIONS:

**Light output:** 1.872 lm

$^{\circ}\text{K}$ : 3000

**Plum:** 18,5W

**CRI:** 80

**Efficacy:** 101,1 lm/w

**MacAdam:** 3

UGR: 17

**Power Supply:** 25

Type: MI

**Gear:** A

**LED Lifetime:** 30,000 Hours B10 / 7

**Power:** 16W/

**Power:** 16W

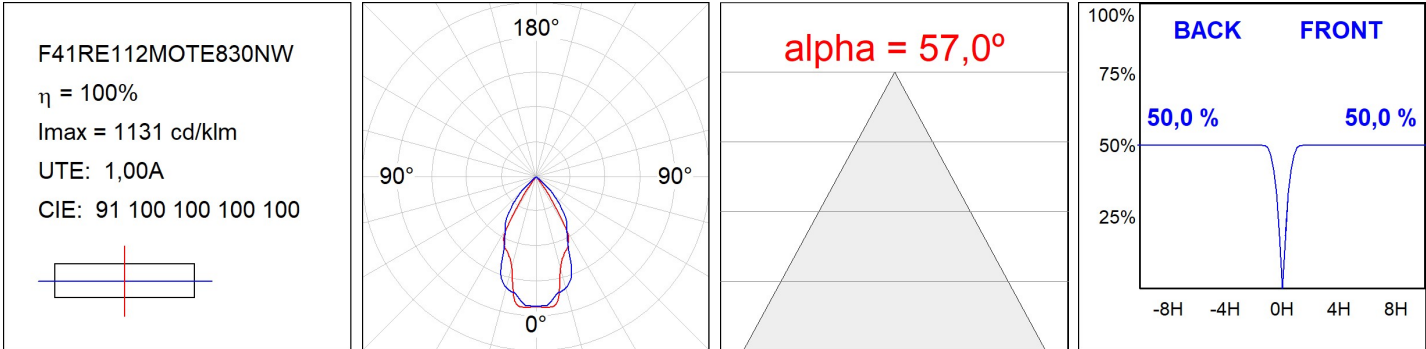
**Light output tolerance +/- 10%**



**CUSTOM MADE OPTIONS:**



PHOTOMETRIC DATA :



ACCESSORIES :

Assembly



**Product code:**  
F4COX/MMB

**Description:**  
FIL 45 ACC. COVER X/MM BK.



**Product code:**  
F4COX/MMG

**Description:**  
FIL 45 ACC. COVER X/MM GR.



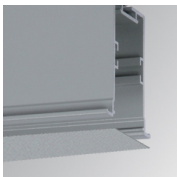
**Product code:**  
F4COX/MMW

**Description:**  
FIL 45 ACC. COVER X/MM WH.



**Product code:**  
F4PRREX/MMB

**Description:**  
FIL 45 ACC. REC PROFIL X/MM BK.



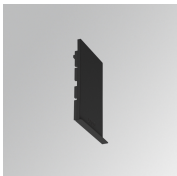
**Product code:**  
F4PRREX/MMG

**Description:**  
FIL 45 ACC. REC PROFIL X/MM GR.



**Product code:**  
F4PRREX/MMW

**Description:**  
FIL 45 ACC. REC PROFIL X/MM WH.



**Product code:**  
F4REECB

**Description:**  
FIL45 ACC. REC END COVER BK.



**Product code:**  
F4REECG

**Description:**  
FIL45 ACC. REC END COVER GR.



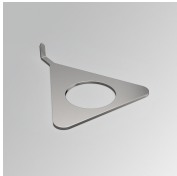
**Product code:**  
F4REECW

**Description:**  
FIL45 ACC. REC END COVER WH.



**Product code:**  
F4REJO

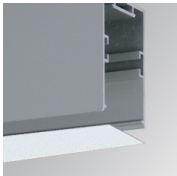
**Description:**  
FIL45 ACC. INTM JOINT B RECESSED



**Product code:**  
F4TORFG

**Description:**  
FIL45 ACC. TOOL REMOVE REFLECTOR

**ACCESORIES :**  
**Optical**



**Product code:**  
F4DIX/MMOP

**Description:**  
FIL 45 ACC. OPAL DIFFUSER X/MM

**ACCESORIES :**  
**Adjustment and control**



**Product code:**  
F41EMG3HDWB

**Description:**  
ACC.FIL45 DOWNLIGHT EMERGENCIA 3H BK



**Product code:**  
F41EMG3HDWG

**Description:**  
ACC.FIL45 DOWNLIGHT EMERGENCIA 3H GR



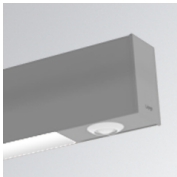
**Product code:**  
F41EMG3HDWW

**Description:**  
ACC.FIL45 DOWNLIGHT EMERGENCIA 3H WH



**Product code:**  
F41LIGHTSNDB

**Description:**  
ACC.FIL45 SENSOR BASIC ILD DALI-2 BK



**Product code:**  
F41LIGHTSNDG

**Description:**  
ACC.FIL45 SENSOR BASIC ILD DALI-2 GR



**Product code:**  
F41LIGHTSNDW

**Description:**  
ACC.FIL45 SENSOR BASIC ILD DALI-2 WH