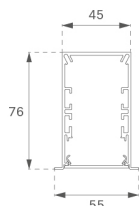


F41RE112MOPRWBTDW



FIL45 REC 1120 2800 WBT OP COMF DALI WH.

Description:

Structure to recessed model FIL45 REC 1120 LAMP brand. Made in extruded recycled aluminum with a rate of 80%, with opal comfort diffuser made of a translucent polycarbonate diffuser and an optical film to achieve a controlled light distribution and low UGR<16. Model for LED MID-POWER, colour temperature TW and with electronic wiring Dali included. With IP20, IK07 protection rating. Insulation Class I. Photobiological safety group 0. LED life time: 50.000 L70 B10. Available finishes: White, black and grey. Environmental Product Declaration - EPD@available, according to UNE-EN ISO 9001:2015 and UNE-EN ISO 14001:2015.

Finish: Matte white RAL 9010

Dimensions: 1.120 x 55 x 76 mm

Weight: 2.726 g

Installation: Recessed

Recessing measures: 1,126 x 51 x 0 mm

TECHNICAL SPECIFICATIONS:

Light output:	1.777 lm	°K :	2700-6500
Plum:	33,1W	CRI :	97
Efficacy:	53,7 lm/w	R9 :	86
UGR:	<16	MacAdam:	3
Type:	MID POWER LED	Power Supply:	220-240V 50/60Hz
LED Lifetime:	50.000 L70 B10 (Ta=25°C)	Gear:	Adjustable DALI
Power:	28W		

Light output tolerance +/- 10%

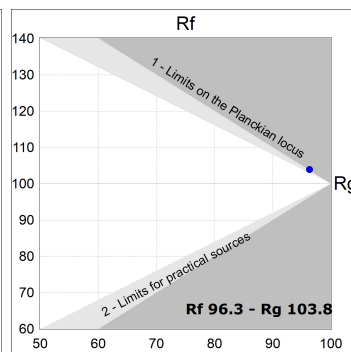
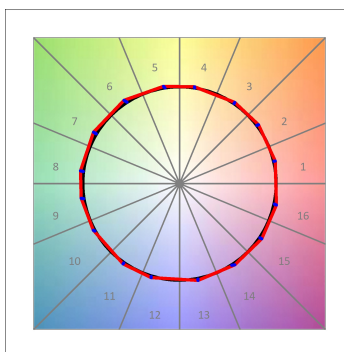
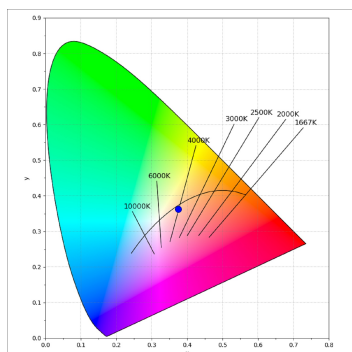
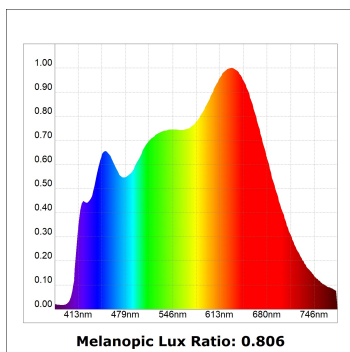
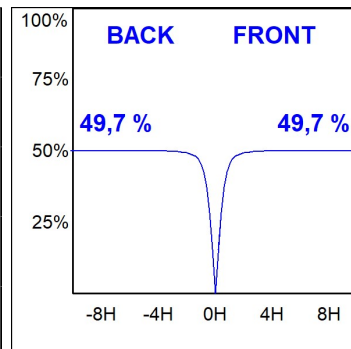
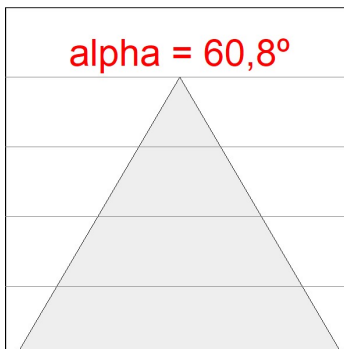
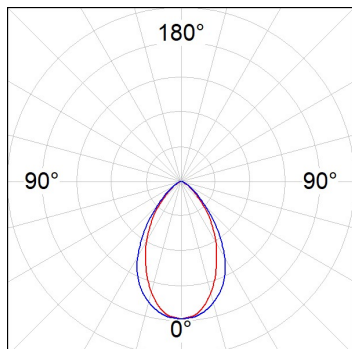


CUSTOM MADE OPTIONS:



PHOTOMETRIC DATA :

F41RE112MOPRWBDW
 $\eta = 99\%$
 $I_{max} = 788 \text{ cd/klm}$
 UTE: 0,99B
 CIE: 76 96 100 100 99



ACCESORIES :

Adjustment and control



Product code:
F41EMG3HDWB

Description:
ACC.FIL45 DOWNLIGHT EMERGENCIA 3H BK



Product code:
F41EMG3HDWG

Description:
ACC.FIL45 DOWNLIGHT EMERGENCIA 3H GR



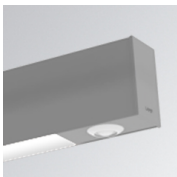
Product code:
F41EMG3HDWW

Description:
ACC.FIL45 DOWNLIGHT EMERGENCIA 3H WH



Product code:
F41LIGHTSNDB

Description:
ACC.FIL45 SENSOR BASIC ILD DALI-2 BK



Product code:
F41LIGHTSNDG

Description:
ACC.FIL45 SENSOR BASIC ILD DALI-2 GR



Product code:
F41LIGHTSNDW

Description:
ACC.FIL45 SENSOR BASIC ILD DALI-2 WH