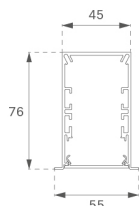


F41RE112MOPR830DW



FIL45 REC 1120 2600 WW OP COMF DALI WH.

Description:

Structure to recessed model FIL45 REC 1120 LAMP brand. Made in extruded recycled aluminum with a rate of 80%, with opal comfort diffuser made of a translucent polycarbonate diffuser and an optical film to achieve a controlled light distribution and low UGR<16. Model for LED MID-POWER, colour temperature 3000K with CRI80 and with electronic wiring Dali included. With IP20, IK07 protection rating. Insulation Class I. Photobiological safety group 0. LED life time: 70.000 L80 B10. Available finishes: White, black and grey. Environmental Product Declaration - EPD@available, according to UNE-EN ISO 9001:2015 and UNE-EN ISO 14001:2015.

Finish: Matte white RAL 9010

Dimensions: 1.120 x 55 x 76 mm

Weight: 2.580 g

Installation: Recessed

Recessing measures: 1,126 x 51 x 0 mm

TECHNICAL SPECIFICATIONS:

Light output:	1.922 lm	°K :	3000
Plum:	20,9W	CRI :	80
Efficacy:	91,9 lm/w	MacAdam:	3
UGR:	<16	Power Supply:	220-240V 50/60Hz
Type:	MID POWER LED	Gear:	Adjustable DALI
LED Lifetime:	70.000 L80 B10 (Ta=25°C)		
Power:	17,9W		

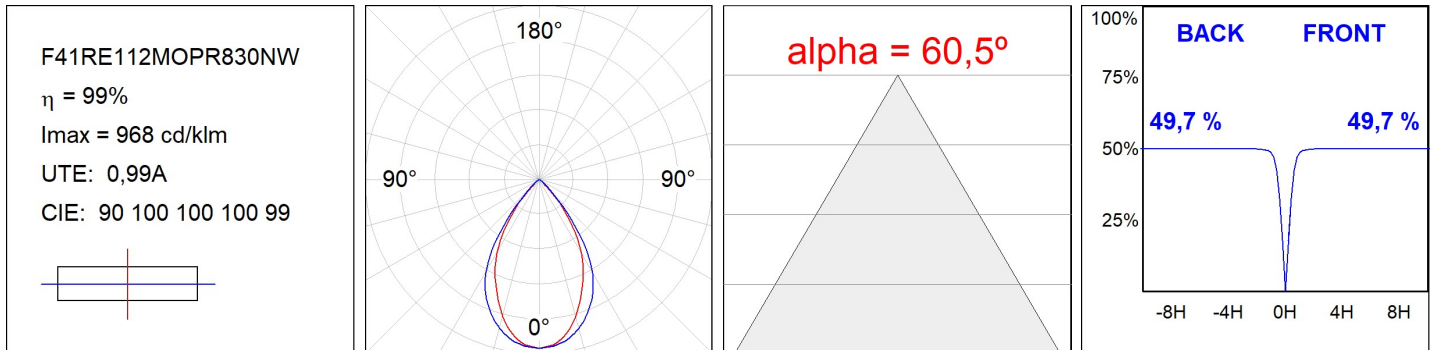
Light output tolerance +/- 10%



CUSTOM MADE OPTIONS:



PHOTOMETRIC DATA :



ACCESORIES :

Assembly



Product code:
F4COX/MMB

Description:
FIL 45 ACC. COVER X/MM BK.



Product code:
F4COX/MMG

Description:
FIL 45 ACC. COVER X/MM GR.



Product code:
F4COX/MMW

Description:
FIL 45 ACC. COVER X/MM WH.



Product code:
F4PRREX/MMB

Description:
FIL 45 ACC. REC PROFIL X/MM BK.



Product code:
F4PRREX/MMG

Description:
FIL 45 ACC. REC PROFIL X/MM GR.



Product code:
F4PRREX/MMW

Description:
FIL 45 ACC. REC PROFIL X/MM WH.



Product code:
F4REECB

Description:
FIL45 ACC. REC END COVER BK.



Product code:
F4REECG

Description:
FIL45 ACC. REC END COVER GR.



Product code:
F4REECW

Description:
FIL45 ACC. REC END COVER WH.



Product code:
F4REJO

Description:
FIL45 ACC. INTM JOINT B RECESSED

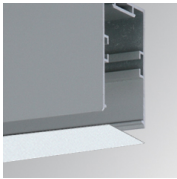


Product code:
F4TORFG

Description:
FIL45 ACC. TOOL REMOVE REFLECTOR

ACCESSORIES :

Optical



Product code:
F4DIX/MMOP

Description:
FIL 45 ACC. OPAL DIFFUSER X/MM

ACCESSORIES :

Adjustment and control



Product code:
F41EMG3HDWB

Description:
ACC.FIL45 DOWNLIGHT EMERGENCIA 3H BK



Product code:
F41EMG3HDWG

Description:
ACC.FIL45 DOWNLIGHT EMERGENCIA 3H GR



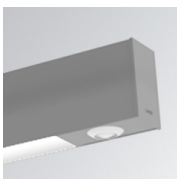
Product code:
F41EMG3HDWW

Description:
ACC.FIL45 DOWNLIGHT EMERGENCIA 3H WH



Product code:
F41LIGHTSNDB

Description:
ACC.FIL45 SENSOR BASIC ILD DALI-2 BK



Product code:
F41LIGHTSNDG

Description:
ACC.FIL45 SENSOR BASIC ILD DALI-2 GR



Product code:
F41LIGHTSNDW

Description:
ACC.FIL45 SENSOR BASIC ILD DALI-2 WH