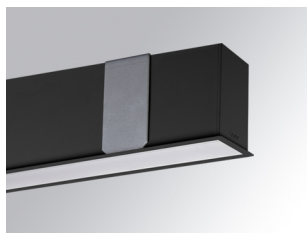


F41RE112MOPR830DB



FIL45 REC 1120 2600 WW OP COMF DALI BK.

Description:

Structure to recessed model FIL45 REC 1120 LAMP brand. Made in extruded recycled aluminum with a rate of 80%, with opal comfort diffuser made of a translucent polycarbonate diffuser and an optical film to achieve a controlled light distribution and low UGR<16. Model for LED MID-POWER, colour temperature 3000K with CRI80 and with electronic wiring Dali included. With IP43, IK07 protection rating. Insulation Class I. Photobiological safety group 0. LED life time: 70.000 L80 B10. Available finishes: White, black and grey. Environmental Product Declaration - EPD@available, according to UNE-EN ISO 9001:2015 and UNE-EN ISO 14001:2015.

Finish: Matte black RAL 9011

Dimensions: 1.120 x 55 x 76 mm

Weight: 2.580 g

Installation: Recessed

Recessing measures: 1,126 x 51 x 0 mm
TECHNICAL SPECIFICATIONS:
Light output: 1.922 lm

°K : 3000

Plum: 20,9W

CRI : 80

Efficacy: 91,9 lm/w

MacAdam: 3

UGR: <16

Power Supply: 220-240V 50/60Hz

Type: MID POWER LED

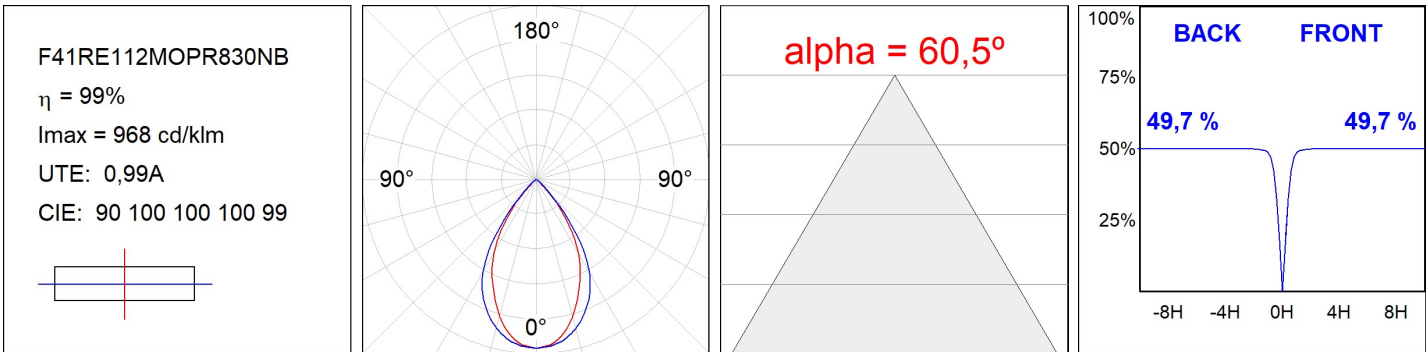
Gear: Adjustable DALI

LED Lifetime: 70.000 L80 B10 (Ta=25°C)

Power: 17,9W

Light output tolerance +/- 10%
**CUSTOM MADE OPTIONS:**

PHOTOMETRIC DATA :



ACCESSORIES :

Assembly

**Product code:**

F42JO

Description:

FIL45 ACC. SU/RE INTM JOINT B

**Product code:**

F4COX/MMB

Description:

FIL 45 ACC. COVER X/MM BK.

**Product code:**

F4COX/MMG

Description:

FIL 45 ACC. COVER X/MM GR.

**Product code:**

F4COX/MMW

Description:

FIL 45 ACC. COVER X/MM WH.

**Product code:**

F4PRREX/MMB

Description:

FIL 45 ACC. REC PROFIL X/MM BK.

**Product code:**

F4PRREX/MMG

Description:

FIL 45 ACC. REC PROFIL X/MM GR.

**Product code:**

F4PRREX/MMW

Description:

FIL 45 ACC. REC PROFIL X/MM WH.

**Product code:**

F4REECB

Description:

FIL45 ACC. REC END COVER BK.

**Product code:**

F4REECG

Description:

FIL45 ACC. REC END COVER GR.

**Product code:**

F4REECW

Description:

FIL45 ACC. REC END COVER WH.

**Product code:**

F4TORFG

Description:

FIL45 ACC. TOOL REMOVE REFLECTOR

ACCESORIES :**Optical****Product code:**

F4DIX/MMOP

Description:

FIL 45 ACC. OPAL DIFFUSER X/MM

ACCESORIES :**Adjustment and control****Product code:**

F41EMG3HDWB

Description:

ACC.FIL45 DOWNLIGHT EMERGENCIA 3H BK

**Product code:**

F41EMG3HDWG

Description:

ACC.FIL45 DOWNLIGHT EMERGENCIA 3H GR

**Product code:**

F41EMG3HDWW

Description:

ACC.FIL45 DOWNLIGHT EMERGENCIA 3H WH

**Product code:**

F41LIGHTSNDB

Description:

ACC.FIL45 SENSOR BASIC ILD DALI-2 BK

**Product code:**

F41LIGHTSNDG

Description:

ACC.FIL45 SENSOR BASIC ILD DALI-2 GR

**Product code:**

F41LIGHTSNDW

Description:

ACC.FIL45 SENSOR BASIC ILD DALI-2 WH