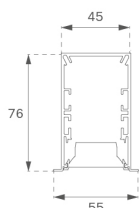


## F41RE084MOT840NB



## FIL45 REC 840 1950 NW TECH BK.

**Description:**

Structure to recessed model FIL45 REC 840 LAMP brand. Made in extruded recycled aluminum with a rate of 80%, with metallic polycarbonate diffuser tech. Model for LED MID-POWER, colour temperature 4000K with CRI80 and with electronic wiring included. With IP20, IK07 protection rating. Insulation Class I. Photobiological safety group 0. LED life time: 70.000 L80 B10. Available finishes: White, black and grey. Environmental Product Declaration - EPD@available, according to UNE-EN ISO 9001:2015 and UNE-EN ISO 14001:2015.

**Finish:** Matte black RAL 9011

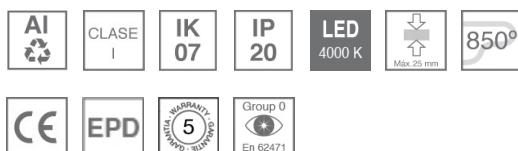
**Dimensions:** 840 x 55 x 76 mm

**Weight:** 2.100 g

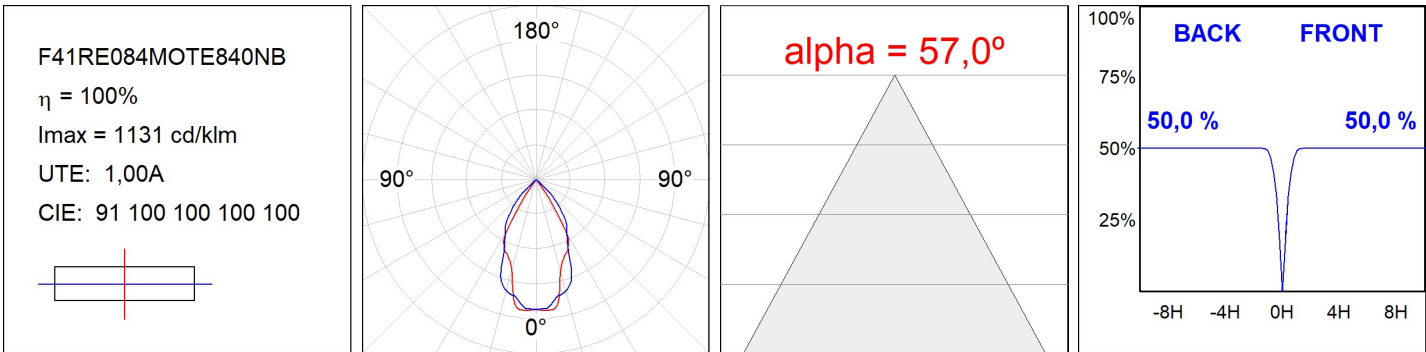
**Installation:** Recessed

**Recessing measures:** 846 x 51 x 0 mm
**TECHNICAL SPECIFICATIONS:**

<b>Light output:</b>	1.472 lm	<b>°K :</b>	4000
<b>Plum:</b>	13,3W	<b>CRI :</b>	80
<b>Efficacy:</b>	110,6 lm/w	<b>MacAdam:</b>	3
<b>UGR:</b>	17	<b>Power Supply:</b>	220-240V 50/60Hz
<b>Type:</b>	MID POWER LED	<b>Gear:</b>	Electronic
<b>LED Lifetime:</b>	70.000 L80 B10 (Ta=25°C)		
<b>Power:</b>	12W		

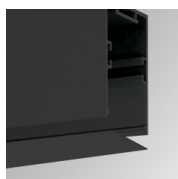
*Light output tolerance +/- 10%*
**CUSTOM MADE OPTIONS:**

PHOTOMETRIC DATA :



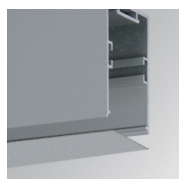
ACCESSORIES :

Assembly



**Product code:**  
F4COX/MMB

**Description:**  
FIL 45 ACC. COVER X/MM BK.



**Product code:**  
F4COX/MMG

**Description:**  
FIL 45 ACC. COVER X/MM GR.



**Product code:**  
F4COX/MMW

**Description:**  
FIL 45 ACC. COVER X/MM WH.



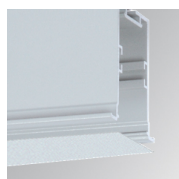
**Product code:**  
F4PRREX/MMB

**Description:**  
FIL 45 ACC. REC PROFIL X/MM BK.



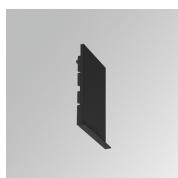
**Product code:**  
F4PRREX/MMG

**Description:**  
FIL 45 ACC. REC PROFIL X/MM GR.



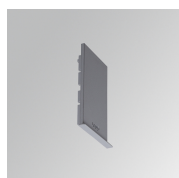
**Product code:**  
F4PRREX/MMW

**Description:**  
FIL 45 ACC. REC PROFIL X/MM WH.



**Product code:**  
F4REECB

**Description:**  
FIL45 ACC. REC END COVER BK.



**Product code:**  
F4REECG

**Description:**  
FIL45 ACC. REC END COVER GR.



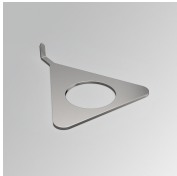
**Product code:**  
F4REECW

**Description:**  
FIL45 ACC. REC END COVER WH.



**Product code:**  
F4REJO

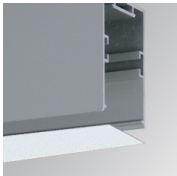
**Description:**  
FIL45 ACC. INTM JOINT B RECESSED



**Product code:**  
F4TORFG

**Description:**  
FIL45 ACC. TOOL REMOVE REFLECTOR

**ACCESORIES :**  
**Optical**



**Product code:**  
F4DIX/MMOP

**Description:**  
FIL 45 ACC. OPAL DIFFUSER X/MM

**ACCESORIES :**  
**Adjustment and control**



**Product code:**  
F41EMG3HDWB

**Description:**  
ACC.FIL45 DOWNLIGHT EMERGENCIA 3H BK



**Product code:**  
F41EMG3HDWG

**Description:**  
ACC.FIL45 DOWNLIGHT EMERGENCIA 3H GR



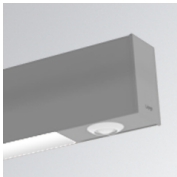
**Product code:**  
F41EMG3HDWW

**Description:**  
ACC.FIL45 DOWNLIGHT EMERGENCIA 3H WH



**Product code:**  
F41LIGHTSNDB

**Description:**  
ACC.FIL45 SENSOR BASIC ILD DALI-2 BK



**Product code:**  
F41LIGHTSNDG

**Description:**  
ACC.FIL45 SENSOR BASIC ILD DALI-2 GR



**Product code:**  
F41LIGHTSNDW

**Description:**  
ACC.FIL45 SENSOR BASIC ILD DALI-2 WH