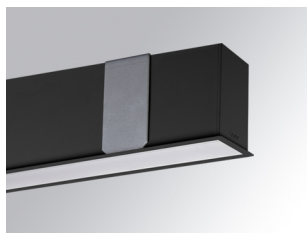


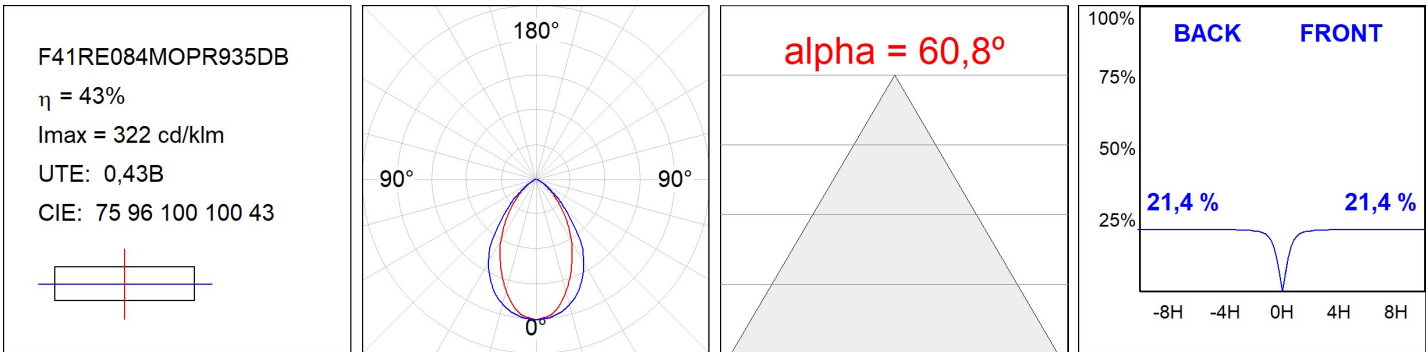
F41RE084MOPR935DB

**FIL45 REC 840 1950 935 OP COMF DALI BK.****Description:**

Structure to recessed model FIL45 REC 840 LAMP brand. Made in extruded recycled aluminum with a rate of 80%, with opal comfort diffuser made of a translucent polycarbonate diffuser and an optical film to achieve a controlled light distribution and low UGR<16. Model for LED MID-POWER, colour temperature 3500K with CRI90 and with electronic wiring Dali included. With IP43, IK07 protection rating. Insulation Class I. Photobiological safety group 0. LED life time: 70.000 L80 B10. Available finishes: White, black and grey. Environmental Product Declaration - EPD@available, according to UNE-EN ISO 9001:2015 and UNE-EN ISO 14001:2015.

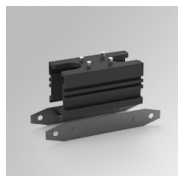
**Finish:** Matte black RAL 9011**Dimensions:** 840 x 55 x 76 mm**Weight:** 2.172 g**Installation:** Recessed**Recessing measures:** 848 x 51 x 0 mm**TECHNICAL SPECIFICATIONS:****Light output:** 1.253 lm**°K :** 3500**Plum:** 15,5W**CRI :** 90**Efficacy:** 80,8 lm/w**MacAdam:** 3**UGR:** 18**Power Supply:** 220-240V 50/60Hz**Type:** MID POWER TRIDONIC**Gear:** Adjustable DALI**LED Lifetime:** 70.000 L80 B10 (Ta=25°C)**Power:** 13,5W**Light output tolerance +/- 10%****CUSTOM MADE OPTIONS:**

PHOTOMETRIC DATA :



## ACCESSORIES :

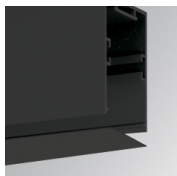
## Assembly

**Product code:**

F42JO

**Description:**

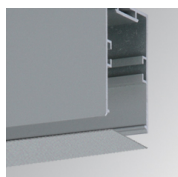
FIL45 ACC. SU/RE INTM JOINT B

**Product code:**

F4COX/MMB

**Description:**

FIL 45 ACC. COVER X/MM BK.

**Product code:**

F4COX/MMG

**Description:**

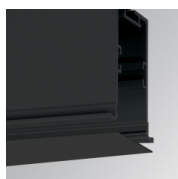
FIL 45 ACC. COVER X/MM GR.

**Product code:**

F4COX/MMW

**Description:**

FIL 45 ACC. COVER X/MM WH.

**Product code:**

F4PRREX/MMB

**Description:**

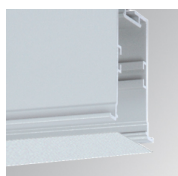
FIL 45 ACC. REC PROFIL X/MM BK.

**Product code:**

F4PRREX/MMG

**Description:**

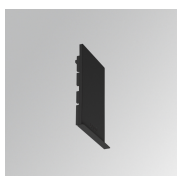
FIL 45 ACC. REC PROFIL X/MM GR.

**Product code:**

F4PRREX/MMW

**Description:**

FIL 45 ACC. REC PROFIL X/MM WH.

**Product code:**

F4REECB

**Description:**

FIL45 ACC. REC END COVER BK.

**Product code:**

F4REECG

**Description:**

FIL45 ACC. REC END COVER GR.

**Product code:**

F4REECW

**Description:**

FIL45 ACC. REC END COVER WH.



**Product code:**

F4TORFG

**Description:**

FIL45 ACC. TOOL REMOVE REFLECTOR

---

**ACCESORIES :**

**Optical**



**Product code:**

F4DIX/MMOP

**Description:**

FIL 45 ACC. OPAL DIFFUSER X/MM

---

**ACCESORIES :**

**Adjustment and control**



**Product code:**

F41EMG3HDWB

**Description:**

ACC.FIL45 DOWNLIGHT EMERGENCIA 3H BK



**Product code:**

F41EMG3HDWG

**Description:**

ACC.FIL45 DOWNLIGHT EMERGENCIA 3H GR



**Product code:**

F41EMG3HDWW

**Description:**

ACC.FIL45 DOWNLIGHT EMERGENCIA 3H WH

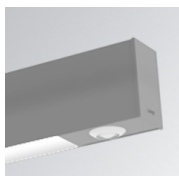


**Product code:**

F41LIGHTSNDB

**Description:**

ACC.FIL45 SENSOR BASIC ILD DALI-2 BK



**Product code:**

F41LIGHTSNDG

**Description:**

ACC.FIL45 SENSOR BASIC ILD DALI-2 GR



**Product code:**

F41LIGHTSNDW

**Description:**

ACC.FIL45 SENSOR BASIC ILD DALI-2 WH