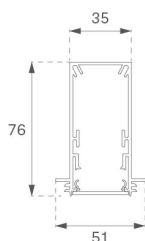


F31TR196LOOP840DW



FIL35 TRIM 1960 2800 NW OPAL DALI WH.

Description:

Structure to recessed model FIL35 TRIM 1960 LAMP brand. Made in extruded recycled aluminum with a rate of 80%, with opal polycarbonate diffuser. Model for LED MID-POWER, colour temperature 4000K with CRI80 and with electronic wiring Dali included. With IP43, IK07 protection rating. Insulation Class I. Photobiological safety group 0. LED lifetime: 50.000 L90 B10. Available finishes: White, black and grey. Environmental Product Declaration - EPD@available, according to UNE-EN ISO 9001:2015 and UNE-EN ISO 14001:2015.

Finish: Matte white RAL 9010

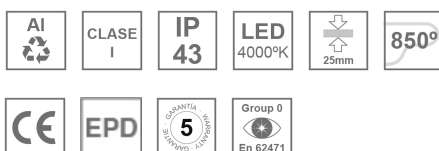
Dimensions: 1.960 x 51 x 76 mm

Weight: 4.650 g

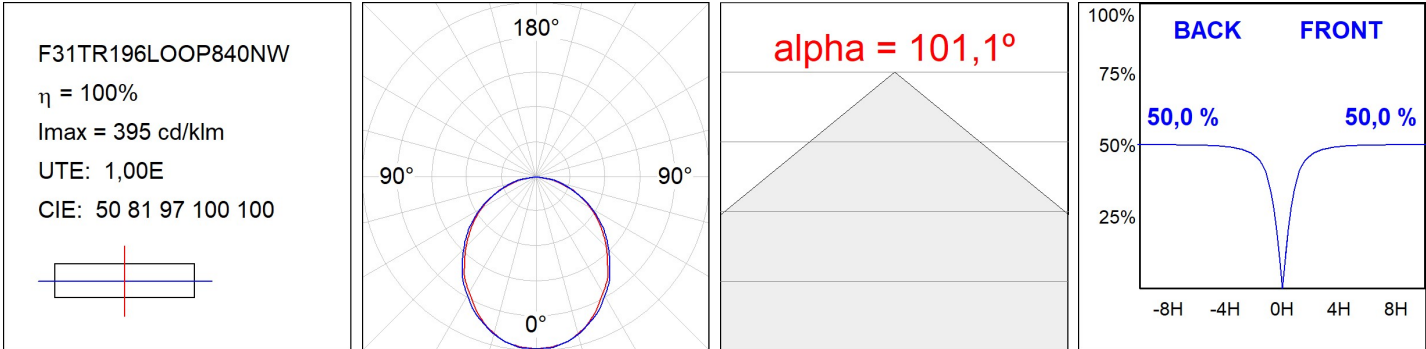
Installation: Recessed

Recessing measures: 1,967 x 52 x 0 mm
TECHNICAL SPECIFICATIONS:

Light output:	2.128 lm	°K :	4000
Plum:	18,9W	CRI :	80
Efficacy:	112,6 lm/w	MacAdam:	3
UGR:	<19	Power Supply:	220-240V 50/60Hz
Type:	MID POWER LED	Gear:	Adjustable DALI
LED Lifetime:	50.000 L90 B10 (Ta=25°C)		
Power:	18W		

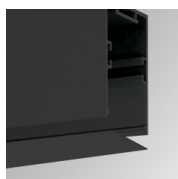
Light output tolerance +/- 10%
**CUSTOM MADE OPTIONS:**

PHOTOMETRIC DATA :



ACCESSORIES :

Assembly

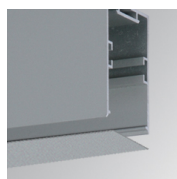


Product code:

F3COX/MMB

Description:

FIL 35 ACC. COVER X/MM BK.

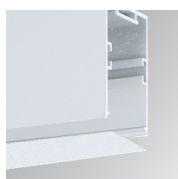


Product code:

F3COX/MMG

Description:

FIL 35 ACC. COVER X/MM GR.

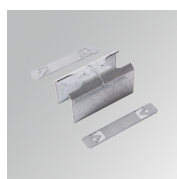


Product code:

F3COX/MMW

Description:

FIL 35 ACC. COVER X/MM WH.



Product code:

F3JO

Description:

FIL35 ACC. INTM JOINT B

F3REJO

FIL35 ACC. INTM JOINT B RECESSED

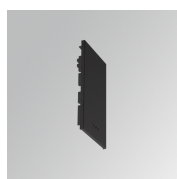


Product code:

F3PRTRX/MMW

Description:

FIL 35 ACC. TRIMLESS PROFIL X/MM WH.



Product code:

F3SUECB

Description:

FIL35 ACC. SUR END COVER BK.



Product code:

F3SUECG

Description:

FIL35 ACC. SUR END COVER GR.



Product code:

F3SUECW

Description:

FIL35 ACC. SUR END COVER WH.



Product code:

F3TRECW

Description:

FIL35 ACC. TRIM END COVER WH.

ACCESSORIES :

Optical

FIL35



Product code:

F3DIX/MMOP

Description:

FIL 35 ACC. OPAL DIFFUSER X/MM